

4

3

9

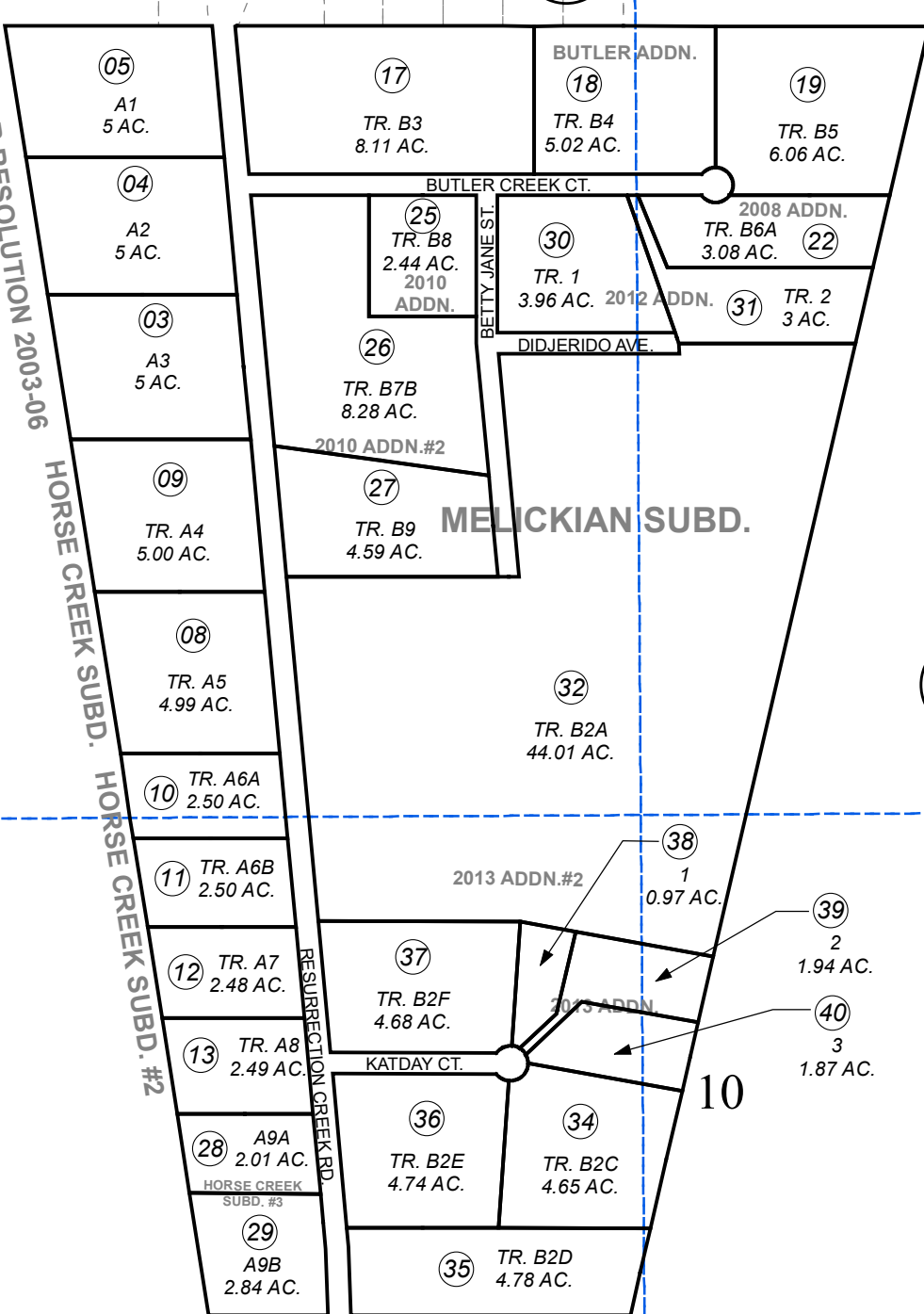
301

100

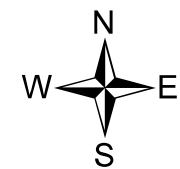
100

100

LAT WAIVER RESOLUTION 2003-06
HORSE CREEK SUBD.
HORSE CREEK SUBD. #2



- HES 252 USS 2761
- PLAT WAIVER RESOLUTION 2003-06 119@194
- HORSE CREEK SUB SW2004005
- HORSE CREEK SUB #2 SW2006005
- MELICKIAN SUB SW2007011
- MELICKIAN SUB BUTLER ADDN SW2007022
- MELICKIAN SUB 2008 ADDN SW2008019
- MELICKIAN SUB 2010 ADDN SW2010007
- MELICKIAN SUB 2010 ADDN #2 SW2010015
- HORSE CREEK SUB #3 SW2012015
- MELICKIAN SUB 2012 ADDN SW2012018
- MELICKIAN SUB 2013 ADDN SW2014018
- MELICKIAN SUB 2018 ADDN SW2018015



0 300 600 Feet

DECEMBER 18, 2018		
For 2019 assessment roll		
Delete	Add	Revise
To		
33	38-40	

Assessor's Map
Kenai Peninsula Borough

Note- Assessor's block Numbers Shown in Ellipses
Assessor's Parcel Numbers Shown in Circles

This map is prepared for Kenai Peninsula Borough Assessing Dept. use only and is not intended for conveyance nor is it a survey.