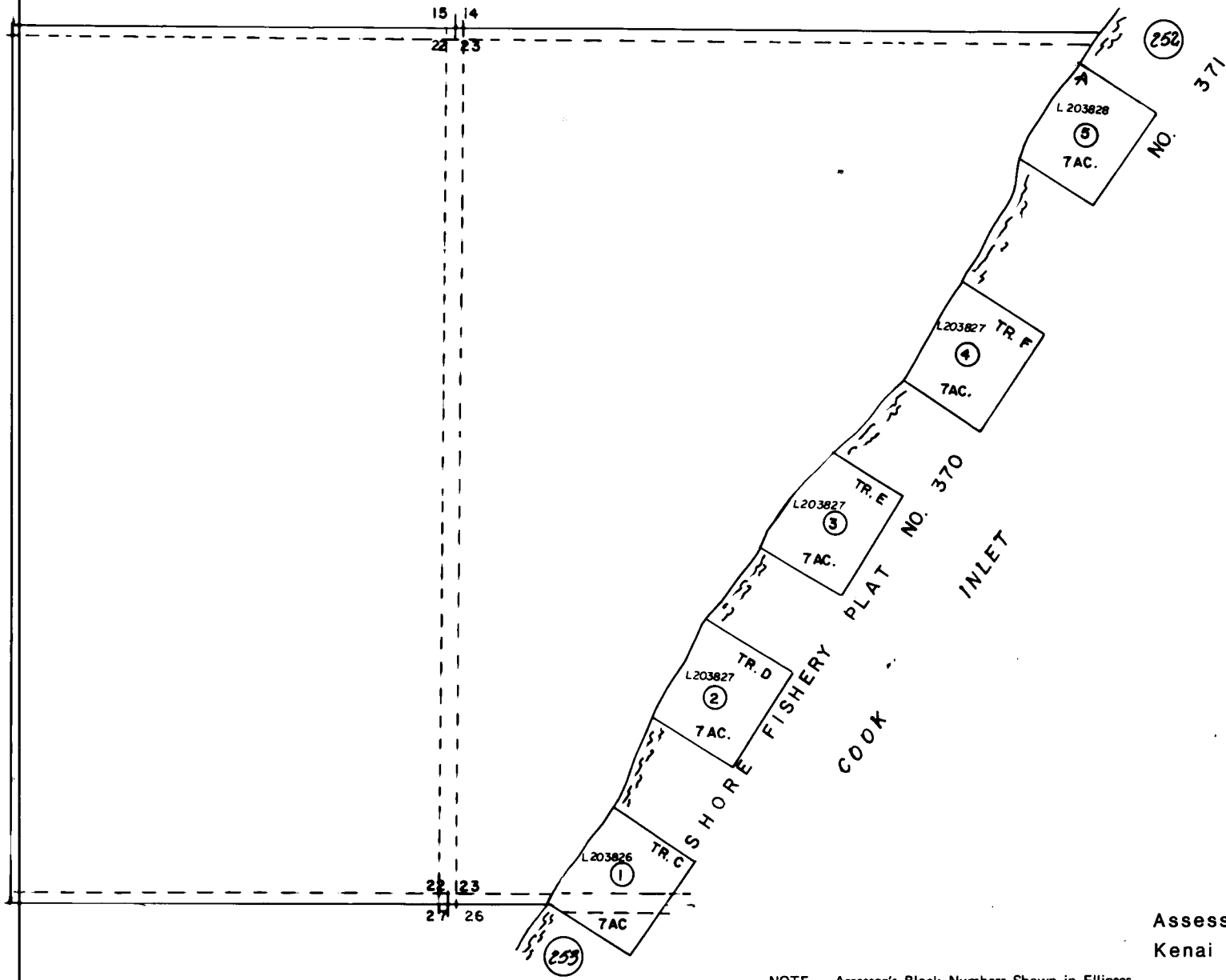


SEC. 23 & E1/2 SEC. 22, T. 2 N., R. 19 W. S M

221-251

14 | 13  
23 | 24



Assessor's Map <sup>23</sup>/<sub>24</sub> 25  
Kenai Peninsula Borough, Alaska

NOTE - Assessor's Block Numbers Shown in Ellipses  
Assessor's Parcel Numbers Shown in Circles