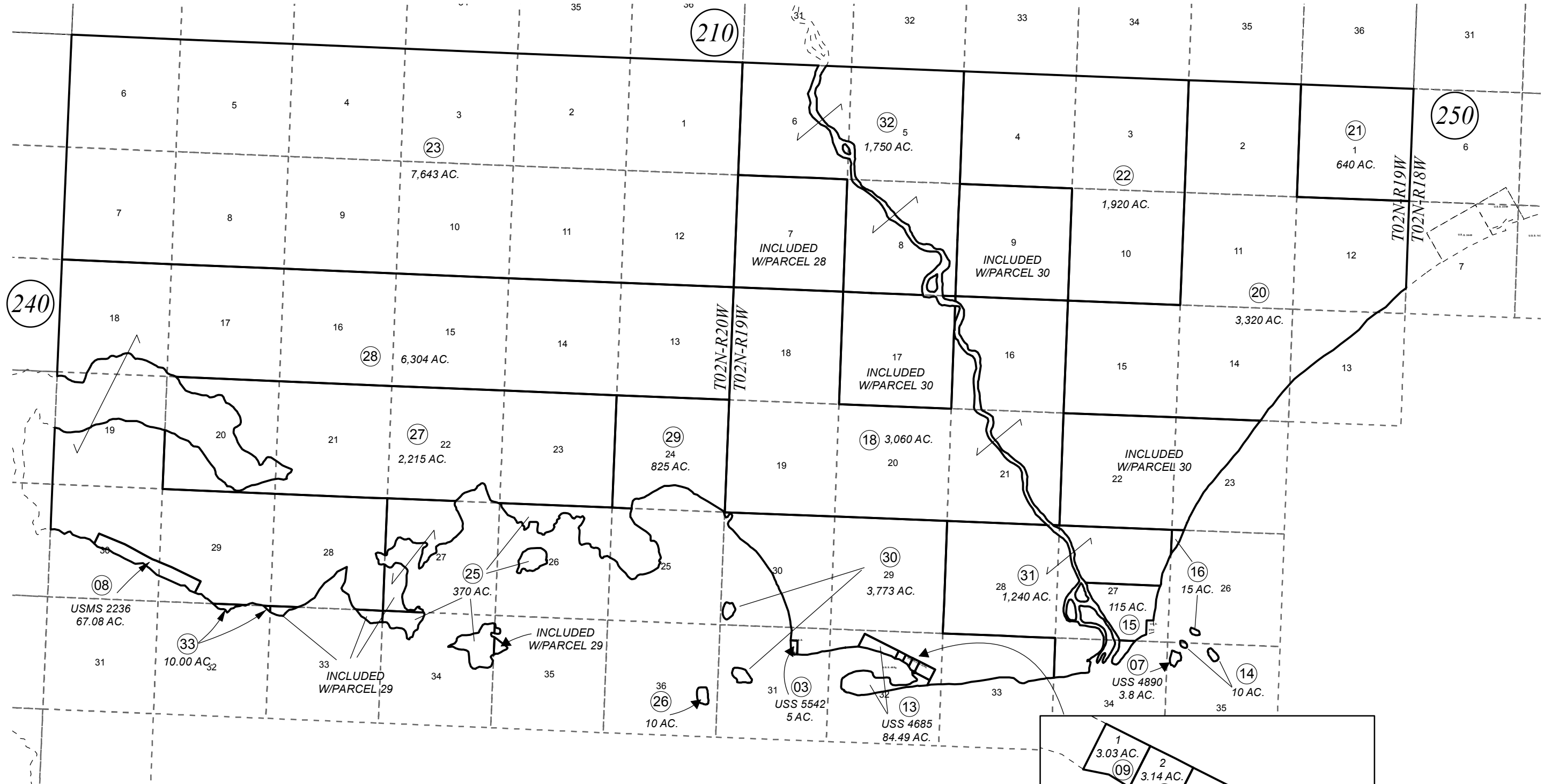


T02N, R19W, R20W, S.M.

221-250



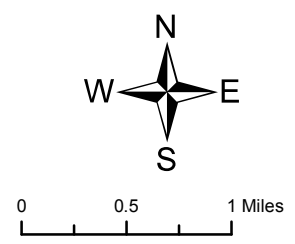
240

210

250

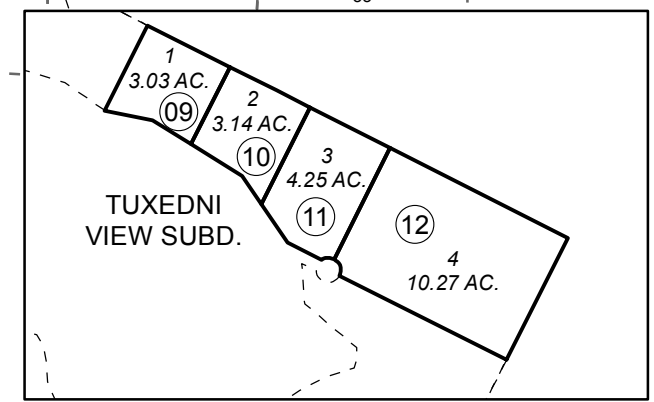
FEBRUARY 1, 2017

For 2017 assessment roll		
Delete	Add	Revise
To		
33		



Assessor's Map
Kenai Peninsula Borough

US MINERAL SURVEY 2236 □ IL0002236
 US SURVEY 4890 □ IL0004890
 US SURVEY 5542 □ IL0005542
 TUXEDNI VIEW SUB □ IL0820014



This map is prepared for Kenai Peninsula Borough Assessing Dept. use only and is not intended for conveyance nor is it a survey.

Note- Assessor's block Numbers Shown in Ellipses
 Assessor's Parcel Numbers Shown in Circles