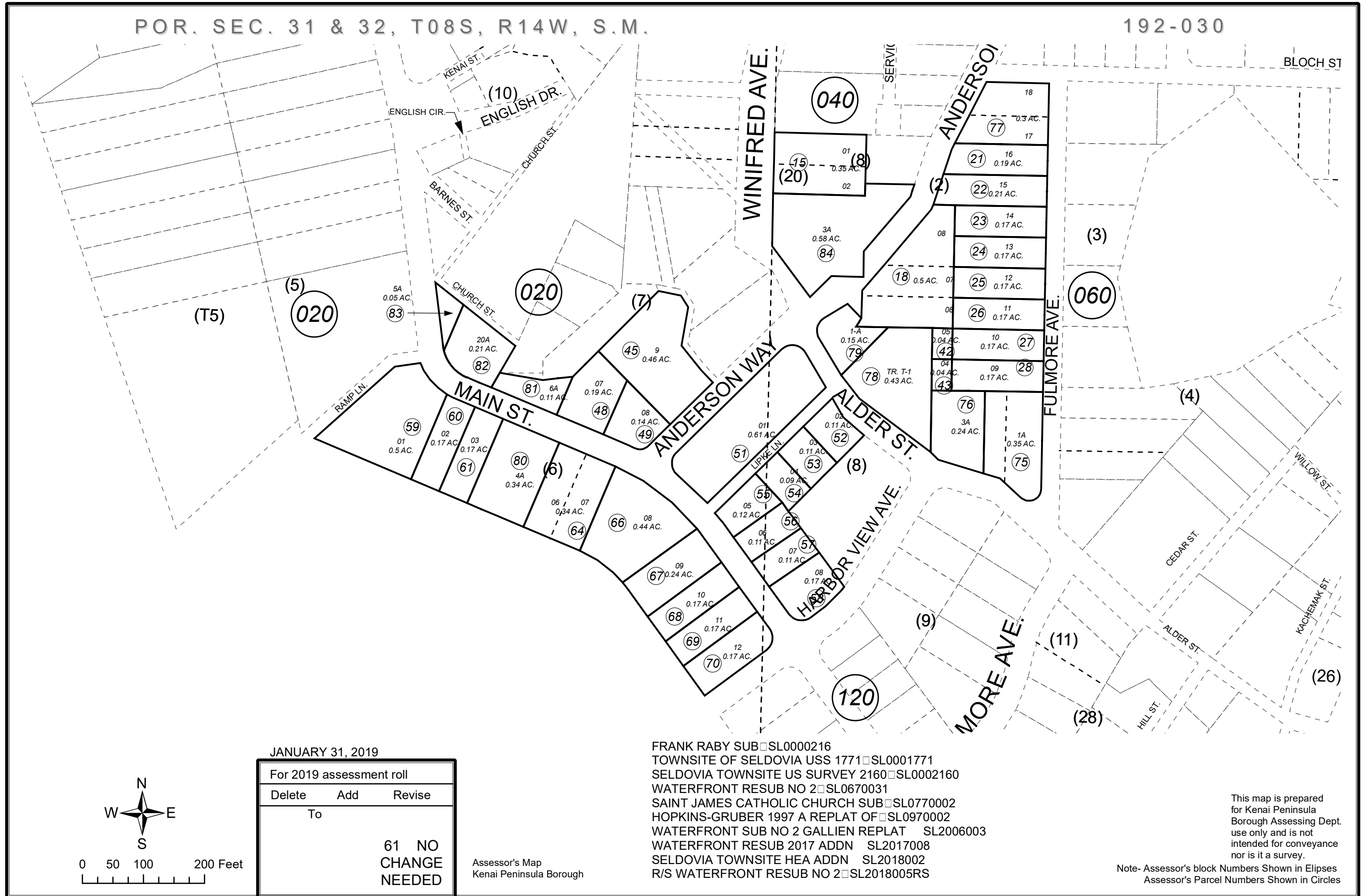


POR. SEC. 31 & 32, T08S, R14W, S.M.

192-030



JANUARY 31, 2019

For 2019 assessment roll		
Delete	Add	Revise
To		
	61	NO CHANGE NEEDED

Assessor's Map
Kenai Peninsula Borough

FRANK RABY SUB SL0000216
 TOWNSITE OF SELDOVIA USS 1771 SL0001771
 SELDOVIA TOWNSITE US SURVEY 2160 SL0002160
 WATERFRONT RESUB NO 2 SL0670031
 SAINT JAMES CATHOLIC CHURCH SUB SL0770002
 HOPKINS-GRUBER 1997 A REPLAT OF SL0970002
 WATERFRONT SUB NO 2 GALLIEN REPLAT SL2006003
 WATERFRONT RESUB 2017 ADDN SL2017008
 SELDOVIA TOWNSITE HEA ADDN SL2018002
 R/S WATERFRONT RESUB NO 2 SL2018005RS

This map is prepared for Kenai Peninsula Borough Assessing Dept. use only and is not intended for conveyance nor is it a survey.

Note- Assessor's block Numbers Shown in Ellipses
Assessor's Parcel Numbers Shown in Circles

