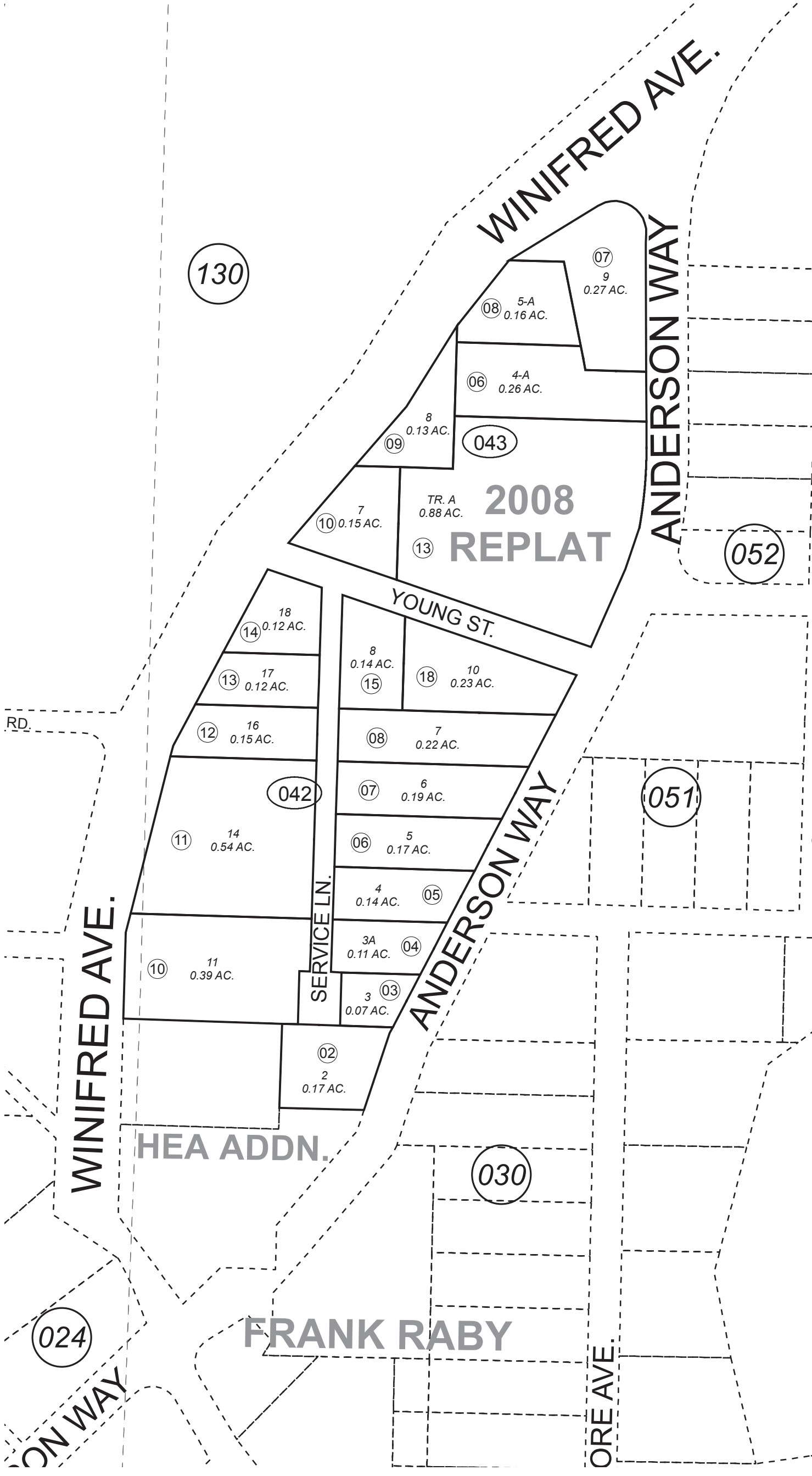


POR. SEC. 32, T08S, R14W, S.M.

192-040



JUNE 6, 2018

For 2019 assessment roll	
Delete	Add
	Revise
To	
04201	192030+



FRANK RABY SUB SL0650030
 FRANK RABY 1984 REPLAT SL0850003
 FRANK RABY 2008 REPLAT SL2008004
 SELDOVIA TOWNSITE HEA ADDN SL2018002

Note- Assessor's block Numbers Shown in Ellipses
 Assessor's Parcel Numbers Shown in Circles

This map is prepared for Kenai Peninsula Borough Assessing Dept. use only and is not intended for conveyance nor is it a survey.