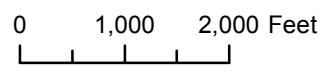
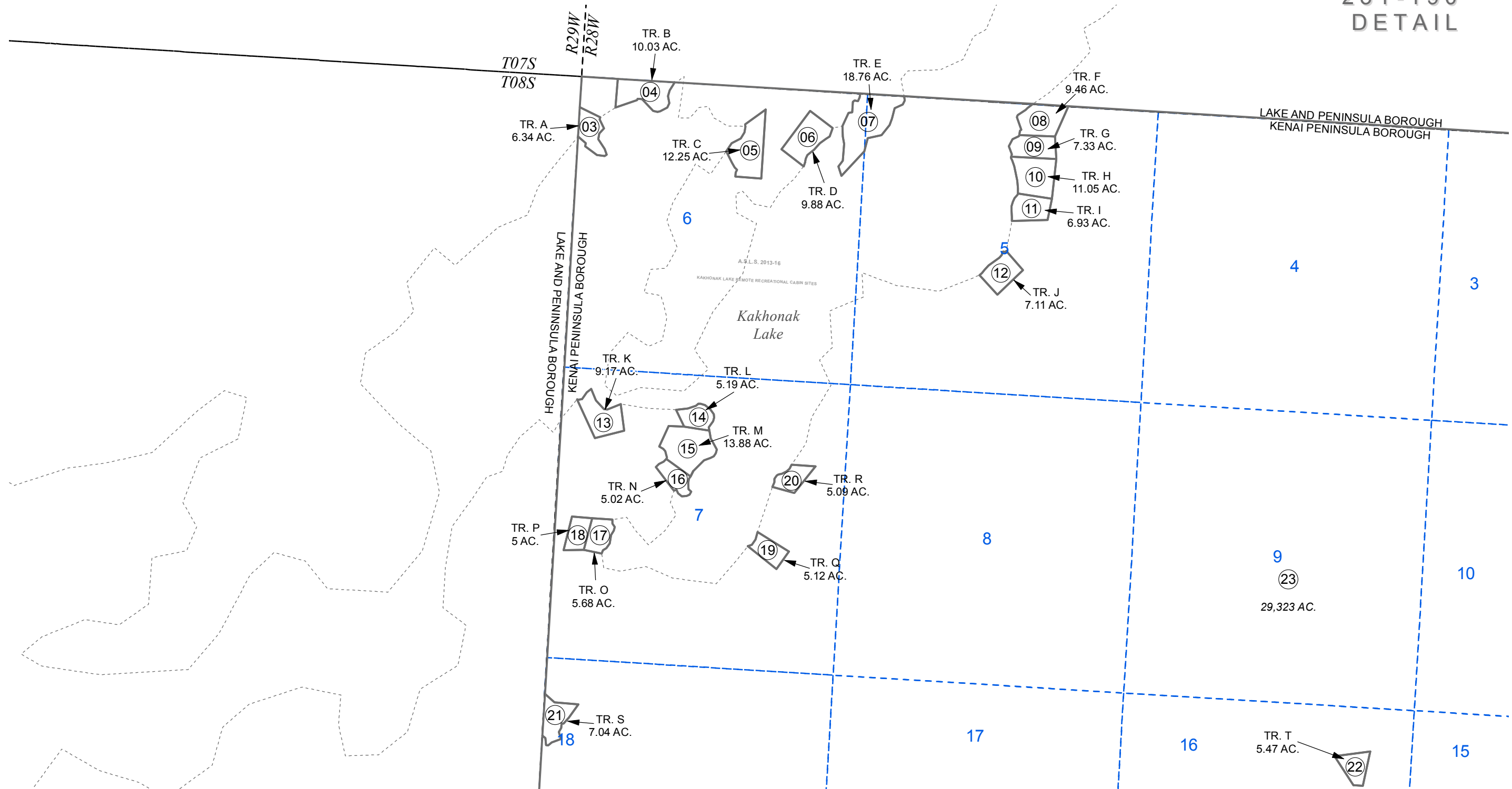


T08S, R26W, R27W, 28W, S.M.

231-190
DETAIL



SEPTEMBER 15, 2015

For 2016 assessment roll		
Delete	Add	Revise
To		
01	03-23	

Assessor's Map
Kenai Peninsula Borough

This map is prepared for Kenai Peninsula Borough Assessing Dept. use only and is not intended for conveyance nor is it a survey.

Note- Assessor's block Numbers Shown in Elipses
Assessor's Parcel Numbers Shown in Circles