

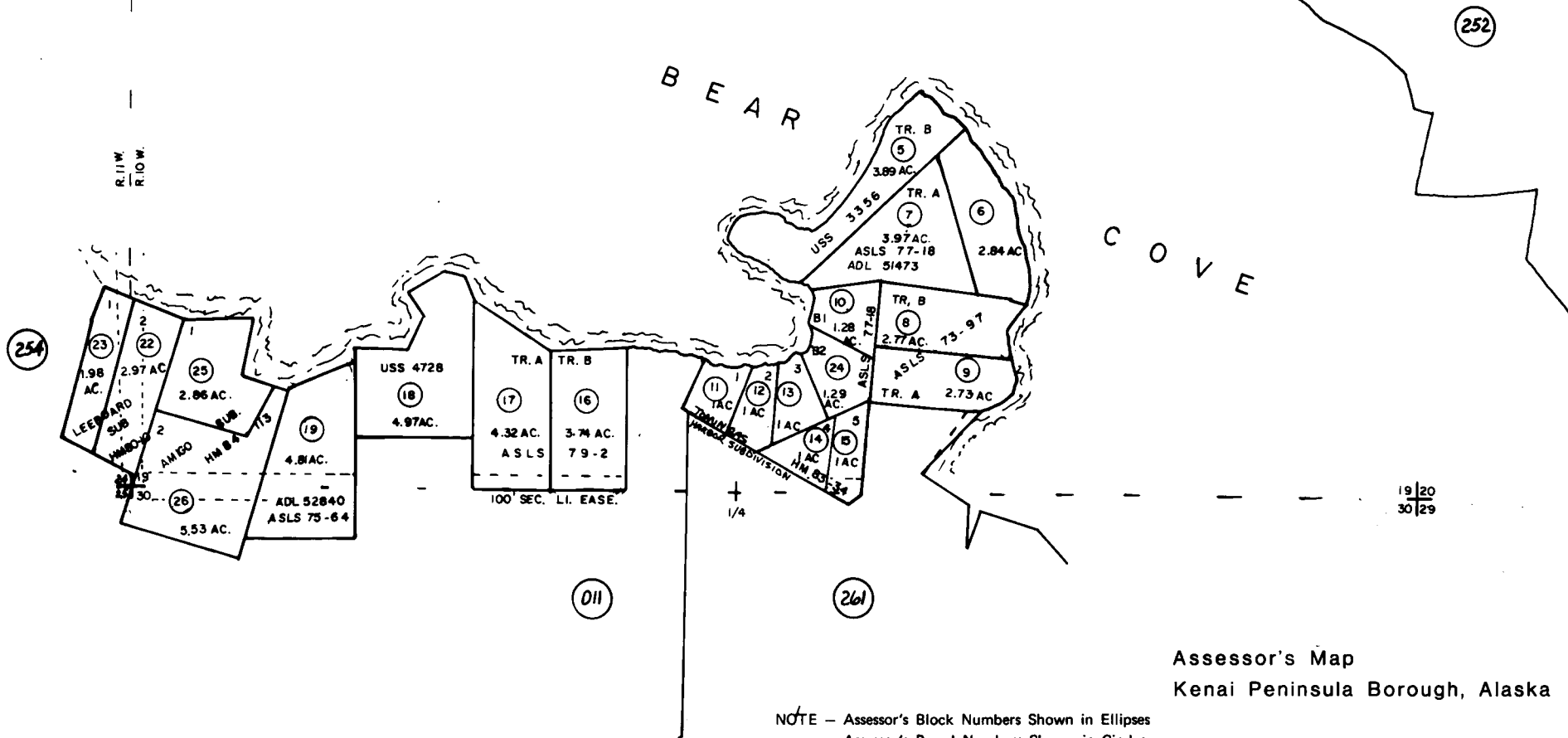
PTN. SECS. 19 & 30 T. 5 S., R. 10 W.
 PTN. SECS. 24 & 25 T. 5 S., R. 11 W. SM

193-253

CEN.
 +

1/4
 +

R. 11 W.
 R. 10 W.



Assessor's Map
 Kenai Peninsula Borough, Alaska

NOTE - Assessor's Block Numbers Shown in Ellipses
 Assessor's Parcel Numbers Shown in Circles