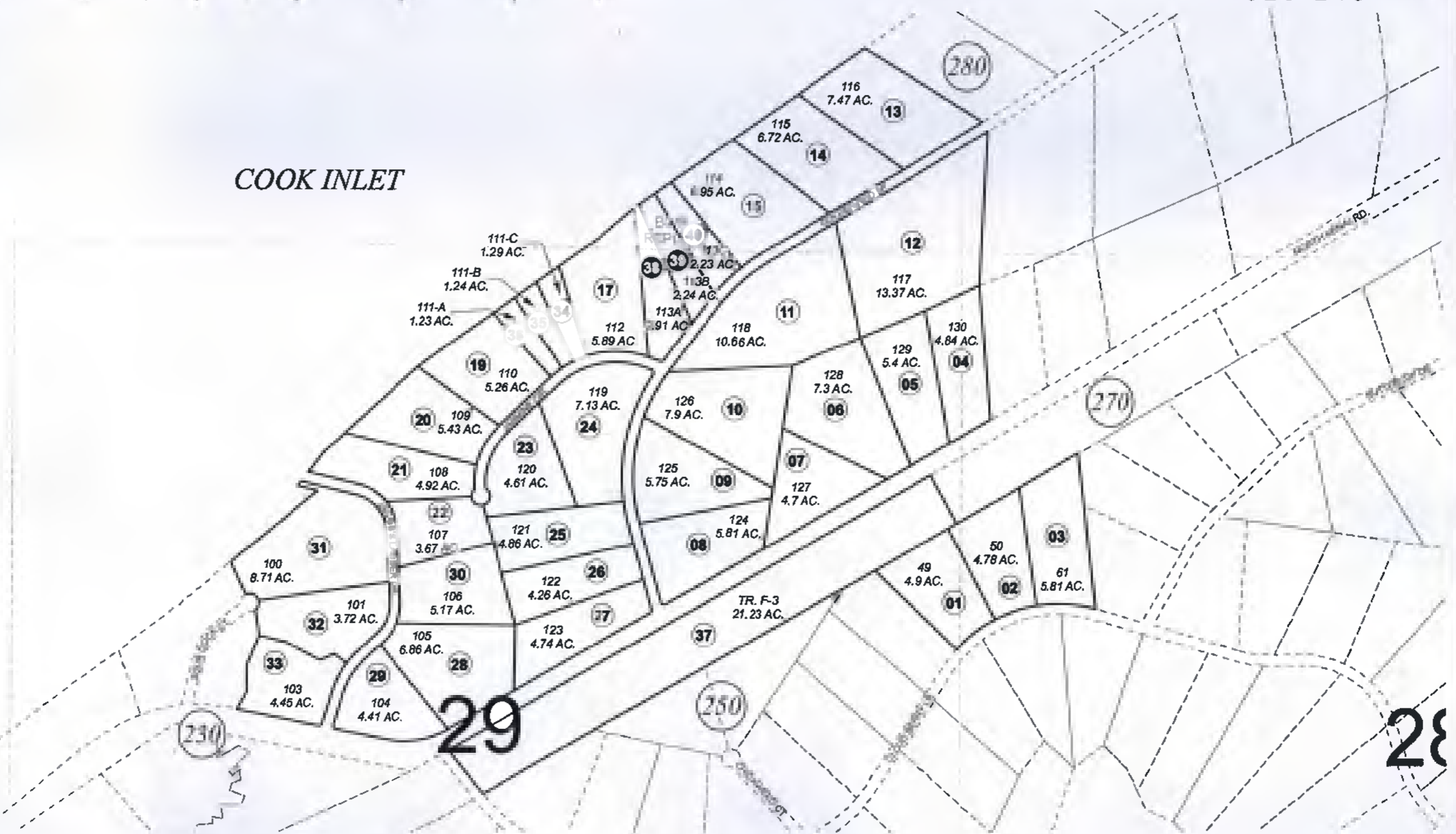


POR. SEC. 20,21,28-30, T09N, R09W, S.M.

025-240

COOK INLET



JANUARY 4, 2011

For 2011 assessment roll		
Delete	Add	Re-assess
	To	
16	38-40	



Assessor's Map
Kenai Peninsula Borough

GRAY CLIFF SUB KN0820080
GRAY CLIFF SUB C CRUMB ADDN KN0870126
GRAY CLIFF SUB BWP REPLAT KN2010076

This map is prepared for Kenai Peninsula Borough Assessing Dept. use only and is not intended for conveyance nor is it a survey.

Note- Assessor's block Numbers Shown in Ellipses
Assessor's Parcel Numbers Shown in Circles