

POR. SEC. 25, T05N, R01W, S.M.

125-220

SITES

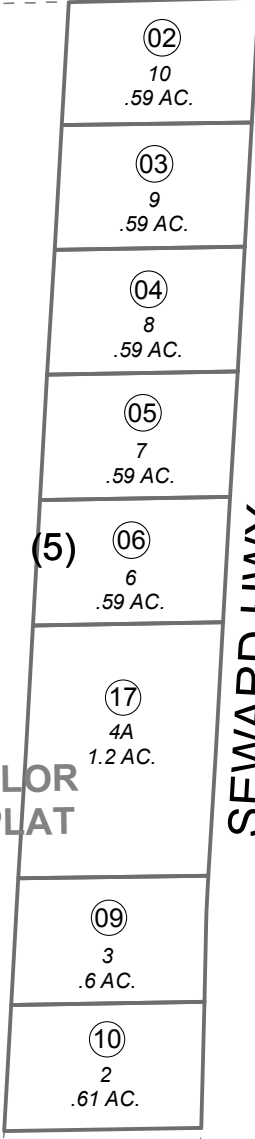
MOOSE PASS TOWNSITE ALASKA

(8) U.S.S. 2676

(6) D ST.

U.S.S. 2064

TAYLOR REPLAT



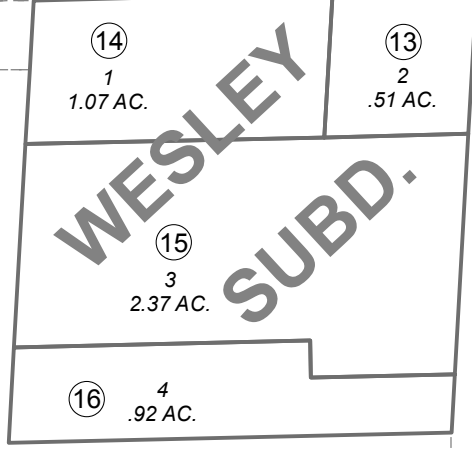
SEWARD HWY.

(7) TR. 7A 2.22 AC.

ASLS 2013-37

(202)

UPPER TRAIL LAKE



WESLEY SUBD.

(390)

WARBURTON CT.

DECEMBER 3, 2014

For 2015 assessment roll	
Delete	Revise
Add	
To	11 18, 19

0 100 200 Feet



Assessor's Map
Kenai Peninsula Borough

US SURVEY 2676 MOOSE PASS TOWNSITE SW0000014
WESLEY SUB SW0890017
MOOSE PASS TOWNSITE TAYLOR REPLAT SW2007013
ALASKA STATE LAND SURVEY 2013-37 SW2014027

Note- Assessor's block Numbers Shown in Ellipses
Assessor's Parcel Numbers Shown in Circles

This map is prepared
for Kenai Peninsula
Borough Assessing Dept.
use only and is not
intended for conveyance
nor is it a survey.