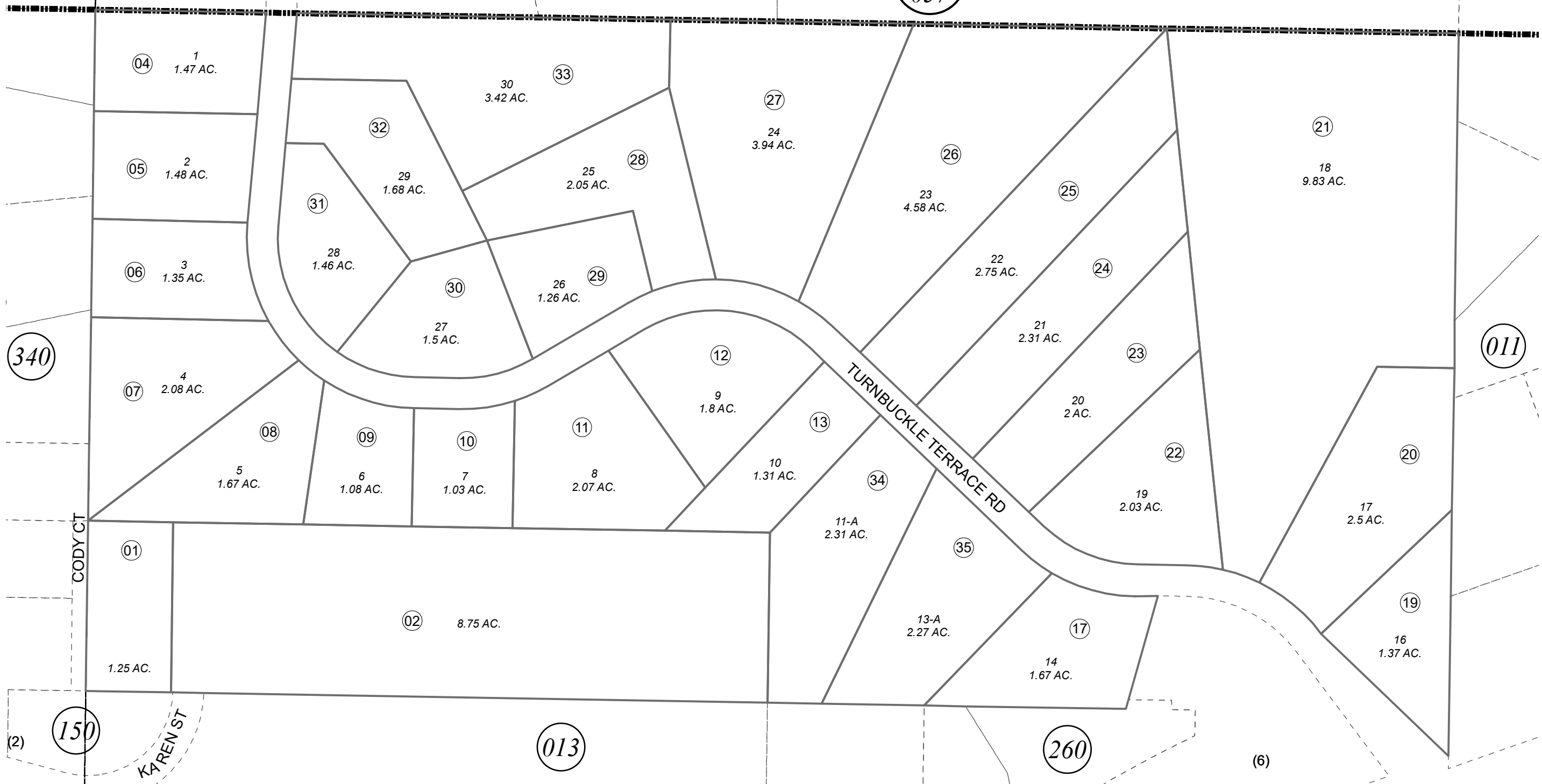


S 1/2 NW 1/4 SEC. 28, T05N, R10W, S.M.

BK
057

059-012



JULY 31, 2023

For 2024 assessment roll		
Delete	Add	Revise
To		
18	059-260+	



0 100 200 Feet

Assessor's Map
Kenai Peninsula Borough

RESERVOIR SUB KN0073028
EASTGATE SUB KN2009043
EASTGATE SUB MCLANE REPLAT KN2014046

This map is prepared for Kenai Peninsula Borough Assessing Dept. use only and is not intended for conveyance nor is it a survey.
Note- Assessor's block Numbers Shown in Elipses
Assessor's Parcel Numbers Shown in Circles