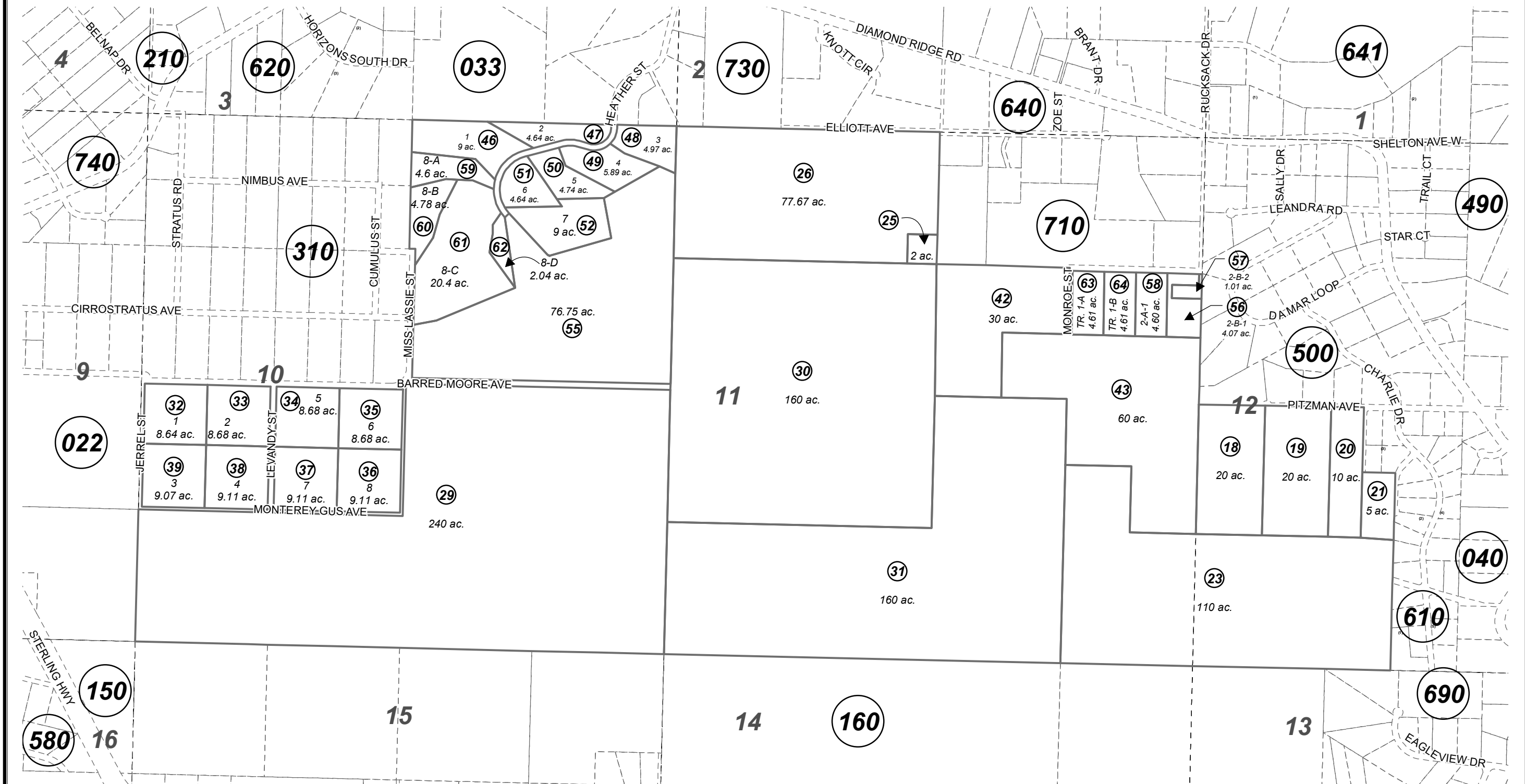


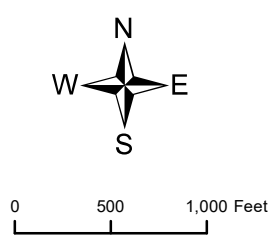
POR. SEC. 10-12, T06S, R14W, S.M.

173-032



NOVEMBER 25, 2023

For 2024 assessment roll		
Delete	Add	Revise
To		
40	63,64	



Assessor's Map
Kenai Peninsula Borough

JERREL SUB ADDN NO 1 HM0770021
 TWIN CREEK SUB HM0780098
 FRED PITZMAN RECORD OF SURVEY HM0960036
 TWIN CREEK SUB NO 2 HM0960046
 REUBEN CALL HOMESTEAD SUB HM0980047
 REUBEN CALL HOMESTEAD SUB 1999 ADDN HM0990046
 TWIN CREEK SUB NO 3 HM2003012
 REUBEN CALL HOMESTEAD SUB 2007 ADDN HM2008088
 TWIN CREEK 2023 HM2023045

This map is prepared for Kenai Peninsula Borough Assessing Dept. use only and is not intended for conveyance nor is it a survey.
 Note- Assessor's block Numbers Shown in Ellipses
 Assessor's Parcel Numbers Shown in Circles