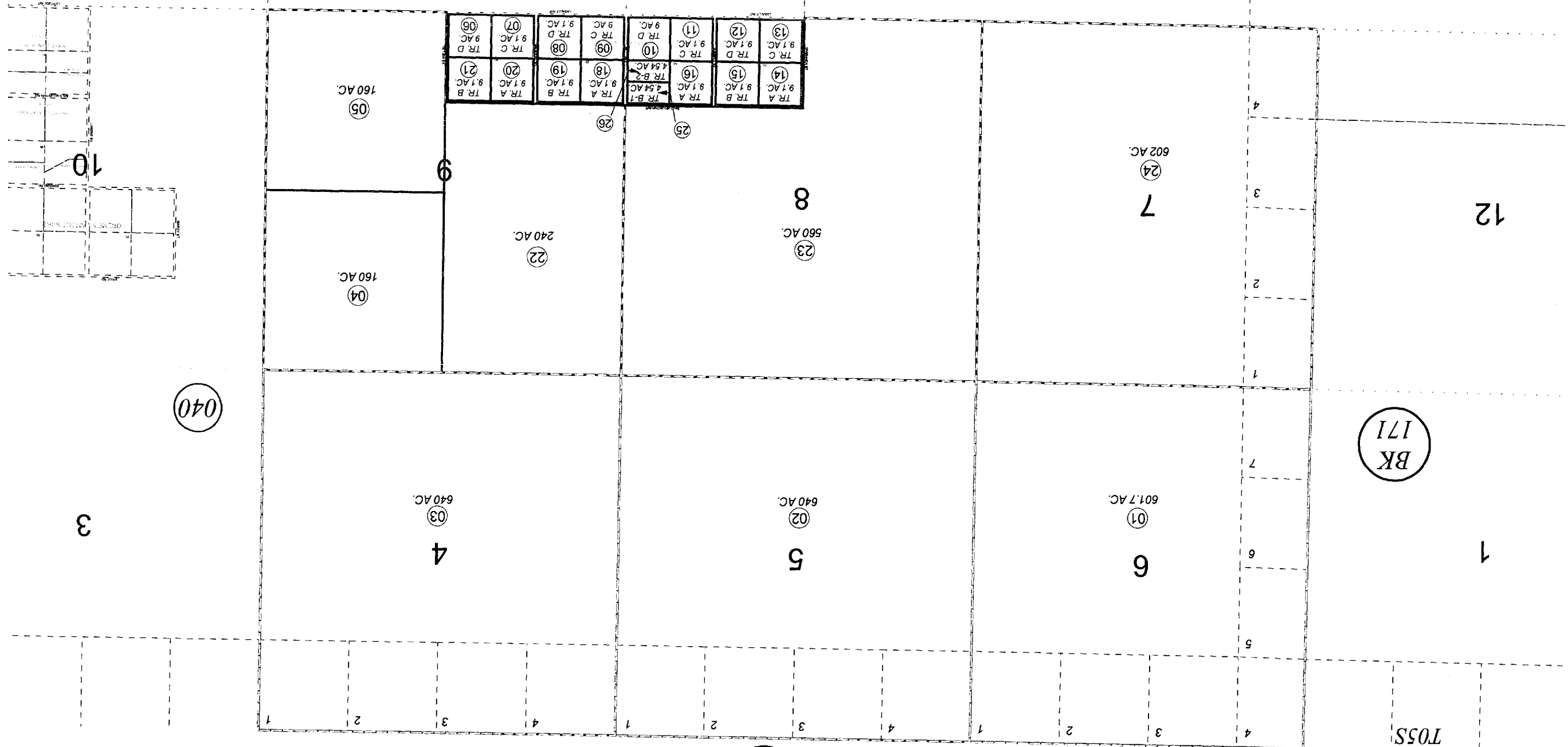


SEC. 4 - 9, T05S, R12W, S.M.

BK 165

172-010

T04S
T05S



12

1

BK 171

6
601.7 AC
01

5
580 AC
02

4
640 AC
03

04
160 AC

05
160 AC

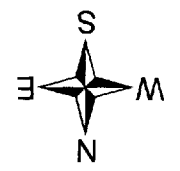
8
580 AC
23

7
602 AC
24

22
240 AC

020

13 9.1 AC TR.C	12 9.1 AC TR.D	11 9.1 AC TR.D	10 9.1 AC TR.C	09 9.1 AC TR.C	08 9.1 AC TR.D	07 9.1 AC TR.C	06 9.1 AC TR.D
14 9.1 AC TR.A	15 9.1 AC TR.B	16 4.54 AC TR.B-2	18 9.1 AC TR.A	19 9.1 AC TR.B	20 9.1 AC TR.A	21 9.1 AC TR.B	21 9.1 AC TR.B
		25 4.54 AC TR.B-1	26 9.1 AC TR.A				



For 2011 assessment roll	
Delete	Add
Revise	
To	17 25,26

SEPTEMBER 28, 2010

Assessor's Map
Kenai Peninsula Borough

ALPINE ESTATES SUB HM0750041
ALPINE ESTATES NO. 2 HM2010041

This map is prepared
for Kenai Peninsula
Borough Assessing Dept.
use only and is not
intended for conveyance
nor is it a survey.
Note- Assessor's block Numbers Shown in Ellipses
Assessor's Parcel Numbers Shown in Circles