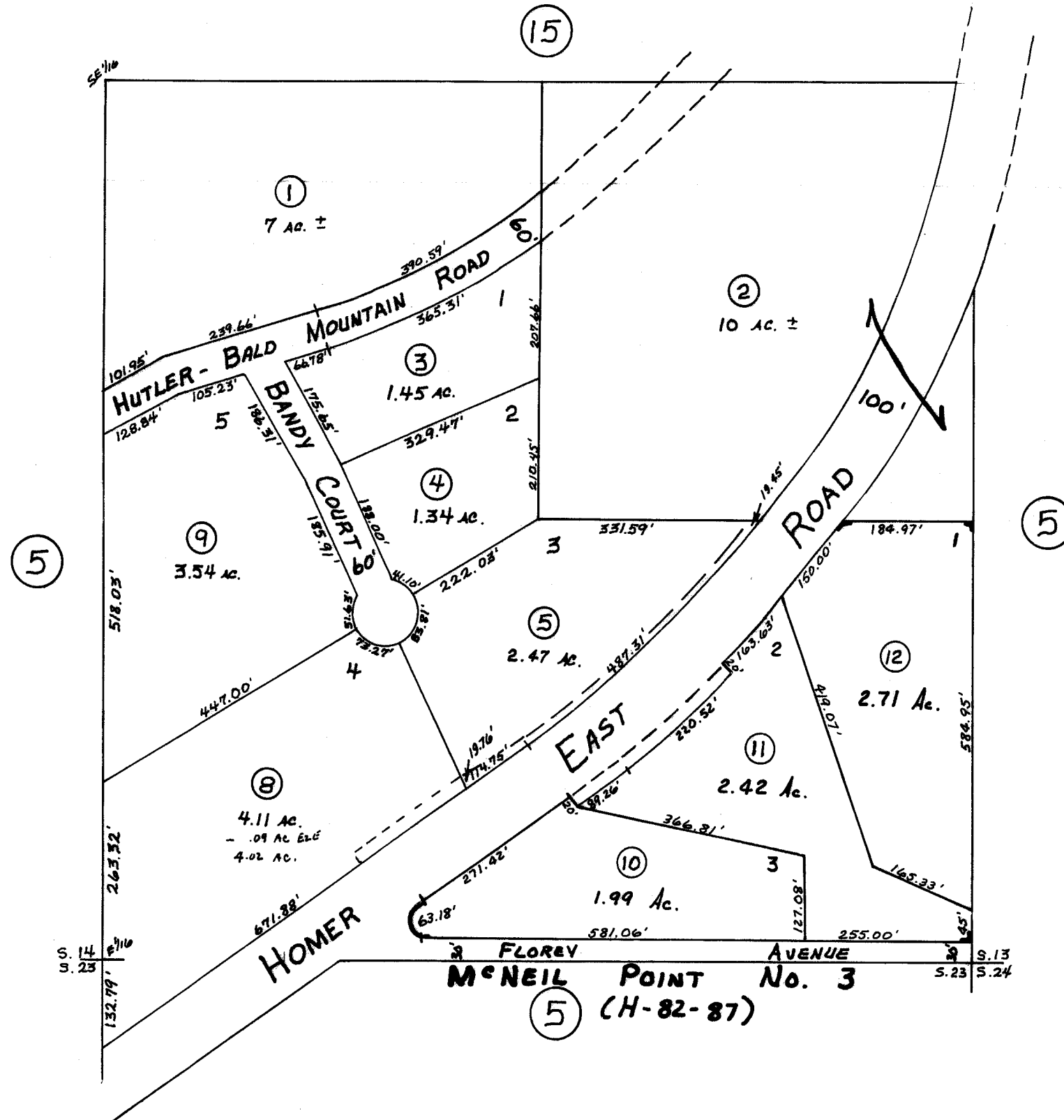


SE 1/4 SE 1/4 SEC. 14, POR. NE 1/4 NE 1/4 SEC. 23, T5S, R12W, S.B. & M.



**McNEIL POINT TOO SUB.**  
 H-81-2  
 McNEIL POINT TOO AMENDER (H83-18)

Assessor's Map  
 Kenai Peninsula Borough, Alaska

NOTE - Assessor's Block Numbers Shown in Ellipses  
 Assessor's Parcel Numbers Shown in Circles