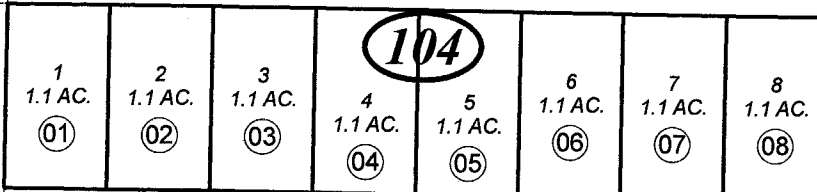


POR. SEC. 31, T05S, R12W, S.M.

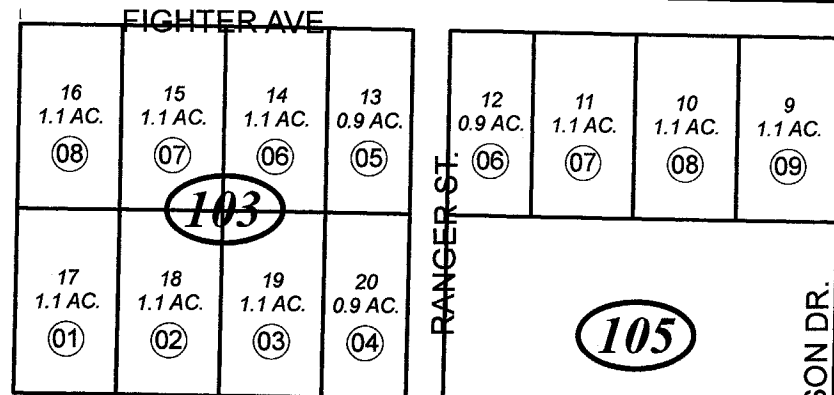
172-100

106
EAGLEAERIE

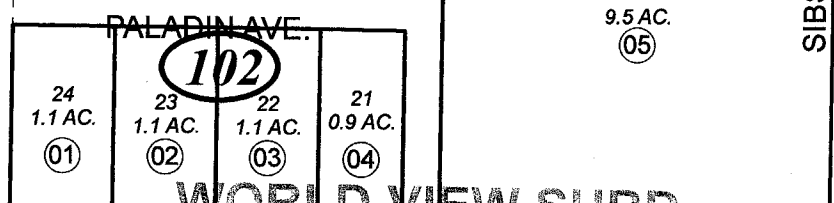


RESUB. TR. C
KACHEMAK HEIGHTS SUBD.

031



110
(1)

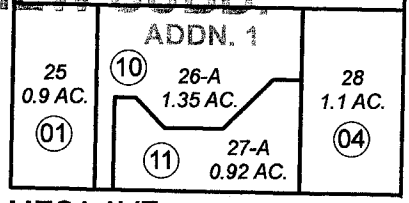


105
9.5 AC. (05)

BRADLEY LN.
VICTOR DR. (3)

WORLD VIEW SUBD.

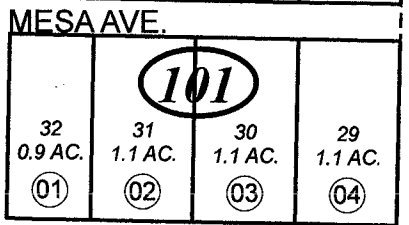
190



LOT 1 REPLAT

THURSTON DR.

031



KACHEMAK HEIGHTS
TRACT E REPLAT

MESA VIEW
SUBD. ADD. 1
LOTS 9-24

110

UNIT 3



KACHEMAK HEIGHTS
SCHROER-NEEDHAM ADDN.

MESA
SUB

031

JUNE 13, 2008

For 2009 assessment roll		
Delete	Add	Revise
10502	10510	
10503	10511	



Assessor's Map
Kenai Peninsula Borough

WORLD VIEW SUB HM0640075
WORLD VIEW SUB ADDN 1 HM2008027

This map is prepared for Kenai Peninsula Borough Assessing Dept. use only and is not intended for conveyance nor is it a survey.
Note- Assessor's block Numbers Shown in Ellipses
Assessor's Parcel Numbers Shown in Circles