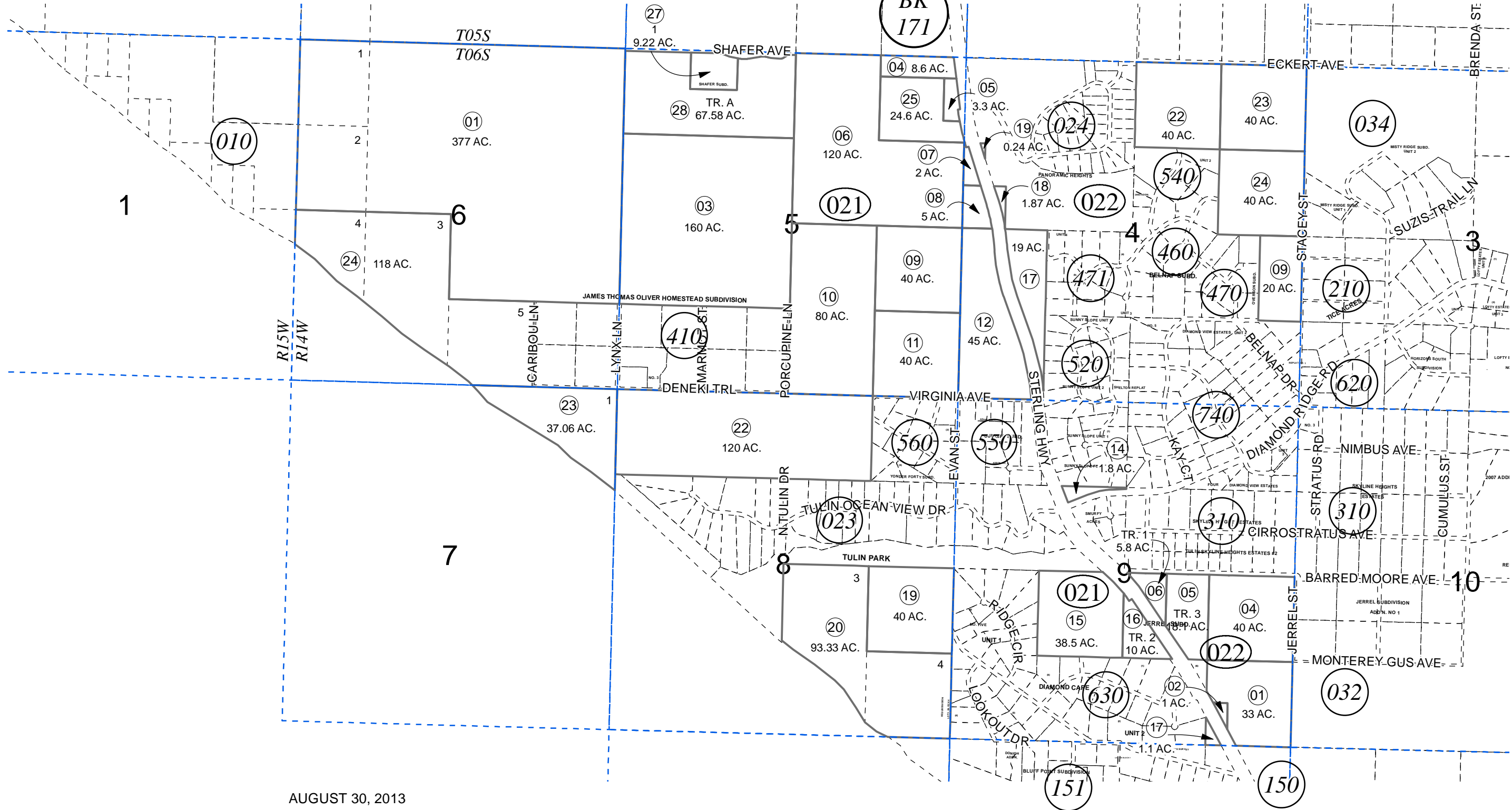


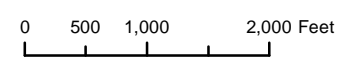
SEC. 4-9, T06S, R23W, R14W, S.M.

173-020



AUGUST 30, 2013

For 2014 assessment roll		
Delete	Add	Revise
	To	
02	27,28	



Assessor's Map  
Kenai Peninsula Borough

JERREL SUB HM0750010  
SHAFFER SUBD HM2013016

Note- Assessor's block Numbers Shown in Ellipses  
Assessor's Parcel Numbers Shown in Circles

This map is prepared for Kenai Peninsula Borough Assessing Dept. use only and is not intended for conveyance nor is it a survey.