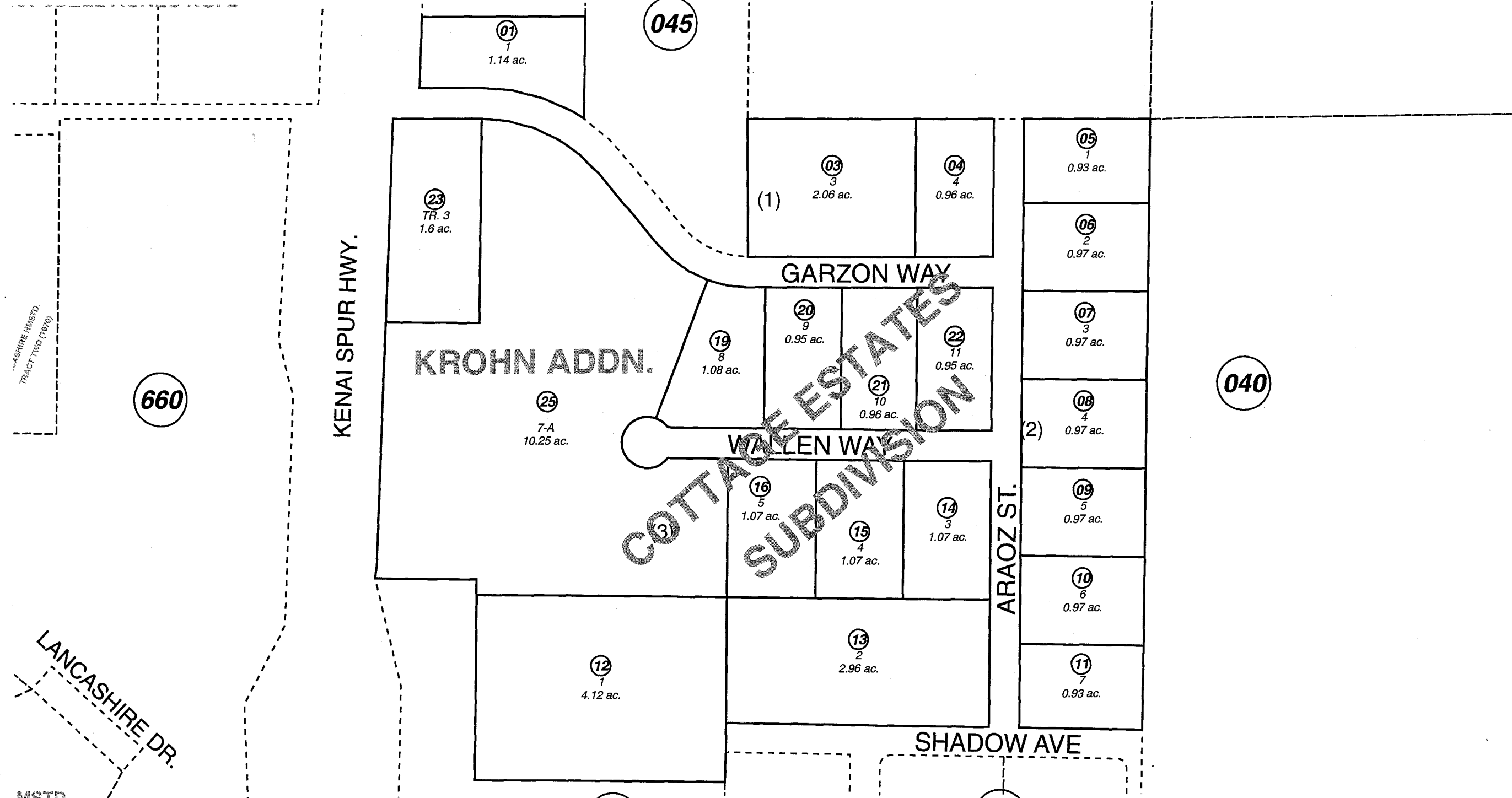


POR. SW1/4 & NW1/4 SEC. 17, T05N, R10W, S.M.

057-046



NOVEMBER 29, 2006

| | | |
|--------------------------|---------|--------|
| For 2007 assessment roll | | |
| Delete | Add | Revise |
| To | | |
| 2 | 057045+ | |

Assessor's Map
Kenai Peninsula Borough

LANCASHIRE HOMESTEAD SUB □ KN0730064
COTTAGE ESTATES SUB □ KN0850100
COTTAGE ESTATES SUB KROHN ADDN □ KN2002105

This map is prepared for Kenai Peninsula Borough Assessing Dept. use only and is not intended for conveyance nor is it a survey.
Note- Assessor's block Numbers Shown in Elipses
Assessor's Parcel Numbers Shown in Circles