

E 1/2 NE 1/4 SEC. 25, T05N, R11W, S.M.

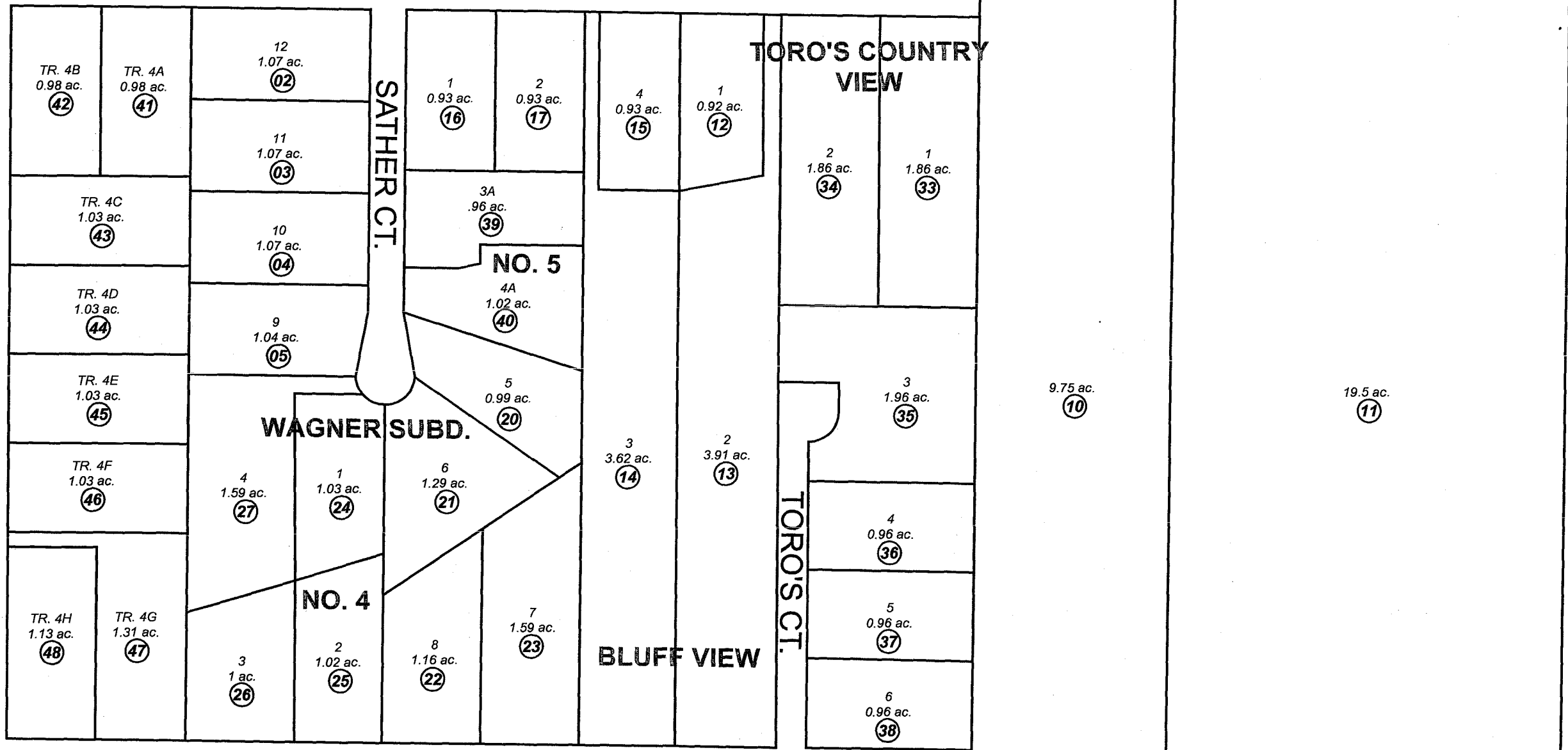
070

055-520

KNACKSTEDT ST.

KNAC

TORO'S COUNTRY VIEW

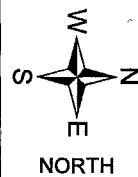


BRIANS ST.

030

370

JUNE 1, 2007



For 2008 assessment roll		
Delete	Add	Revise
	To	
1	41-48	

Assessor's Map
Kenai Peninsula Borough

WAGNER SUB □ KN0750026
 WAGNER SUB NO 2 □ KN0800043
 BLUFF VIEW SUB □ KN0800093
 WAGNER SUB NO 3 □ KN0810003
 WAGNER SUB NO 4 □ KN0830278
 TORO'S COUNTRY VIEW SUB □ KN0850133
 WAGNER SUB NO 5 □ KN2001082
 WAGNER SUB 2007 ADDN KN2007014

This map is prepared for Kenai Peninsula Borough Assessing Dept. use only and is not intended for conveyance nor is it a survey.
 Note- Assessor's block Numbers Shown in Elipses
 Assessor's Parcel Numbers Shown in Circles