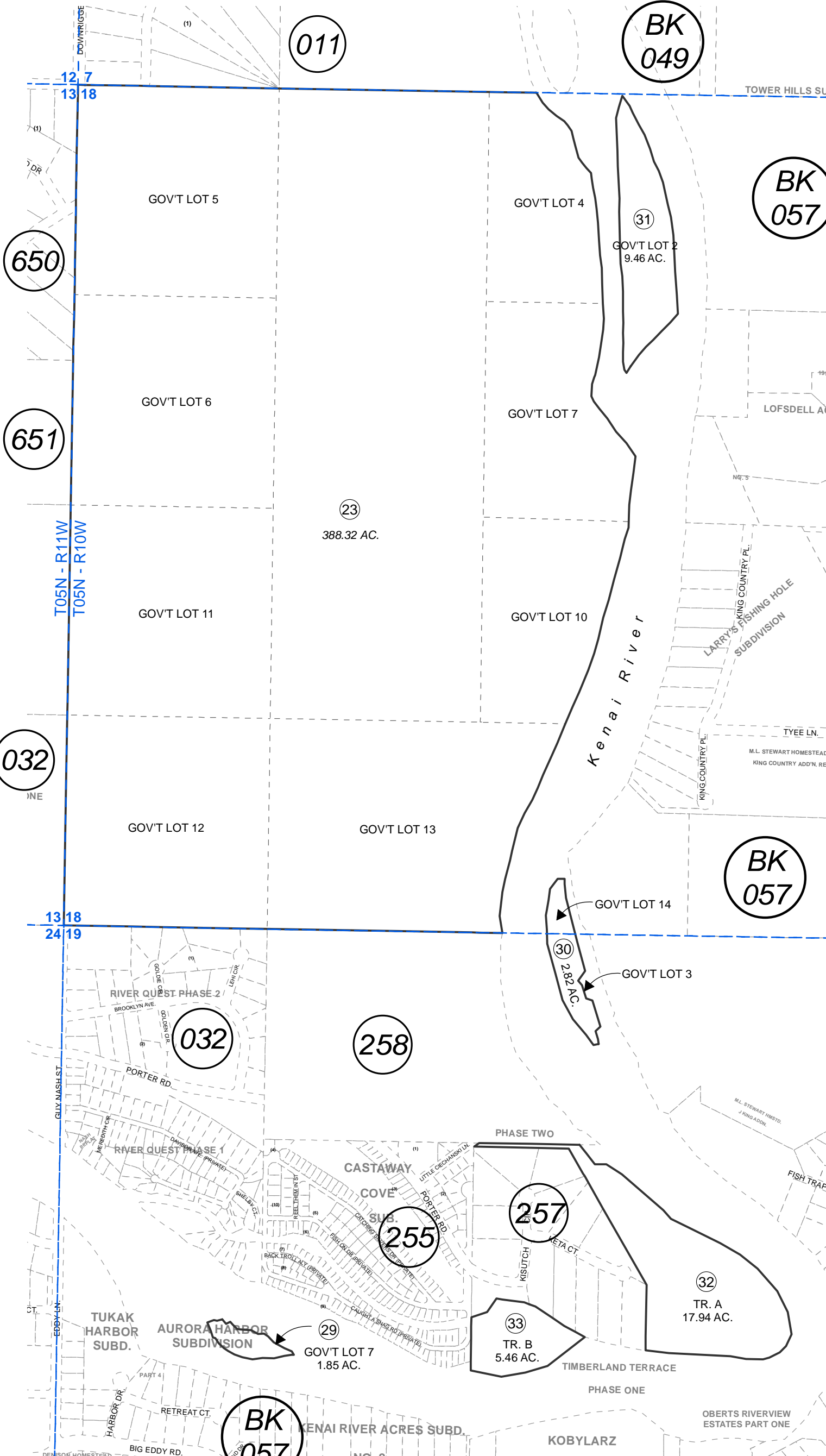


055-250

POR. SEC. 18 & 19, T05N, R10W, S.M.



AUGUST 27, 2014

For 2015 assessment roll	
Delete	Add
	23
	(ACREAGE CHANGE)

This map is prepared for Kenai Peninsula Borough Assessing Dept. use only and is not intended for conveyance nor is it a survey.

Note- Assessor's block Numbers Shown in Ellipses
Assessor's Parcel Numbers Shown in Circles

Assessor's Map Kenai Peninsula Borough
TIMBERLAND TERRACE PHASE ONE KN0970026