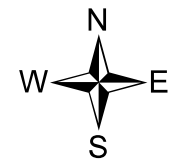
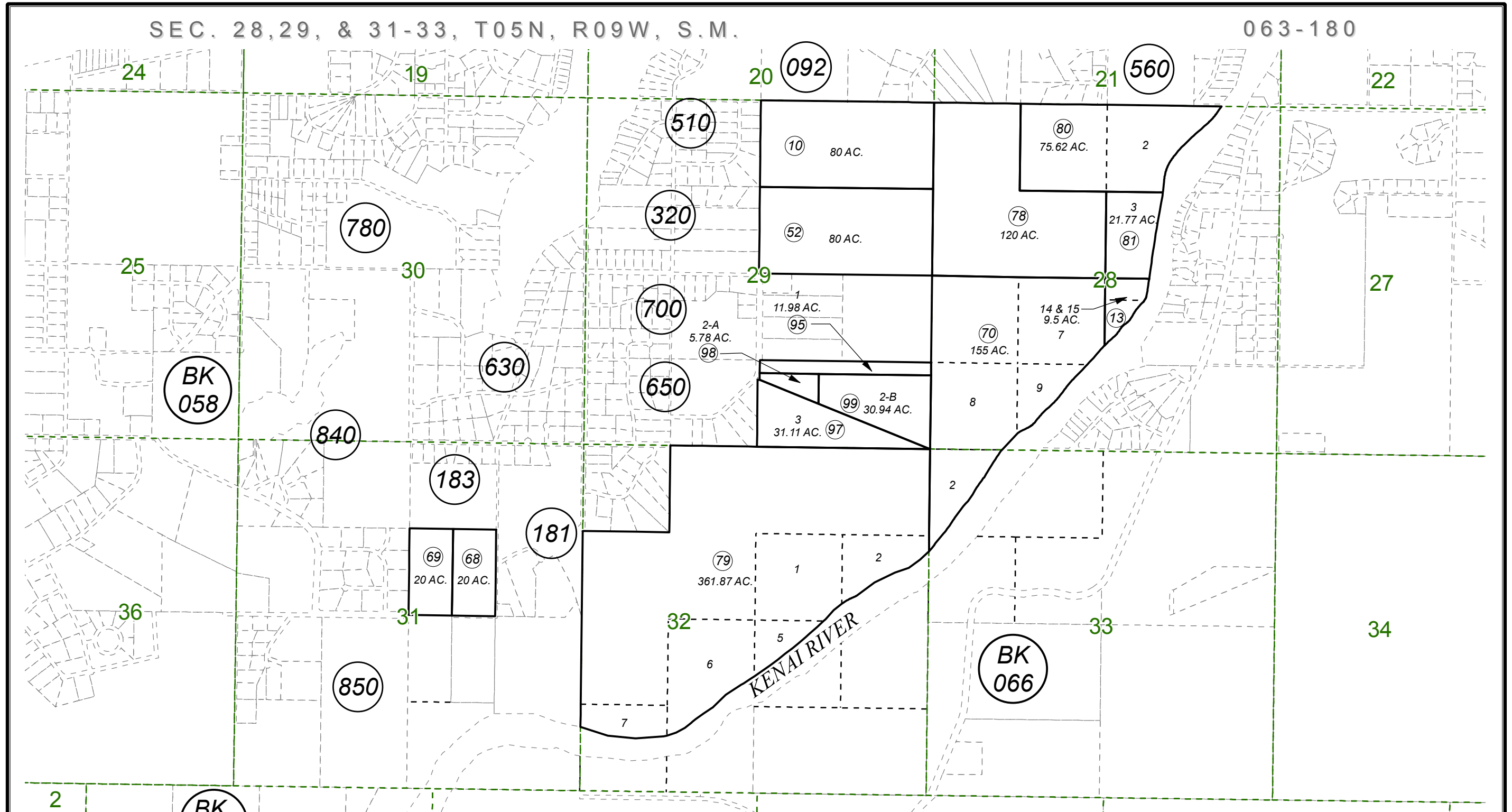


SEC. 28, 29, & 31-33, T05N, R09W, S.M.

063-180



0 1,000 2,000 Feet

APRIL 16, 2019

For 2020 assessment roll		
Delete	Add	Revise
To		
05	063-840+	

Assessor's Map
Kenai Peninsula Borough

GLEN VIEW SUB □ KN0940019
GLEN VIEW SUB ADDN NO 1 □ KN0950020

This map is prepared for Kenai Peninsula Borough Assessing Dept. use only and is not intended for conveyance nor is it a survey.
Note- Assessor's block Numbers Shown in Elipses
Assessor's Parcel Numbers Shown in Circles