

S 1/2 SE 1/4 SEC. 4, T05N, R09W, S.M.

063-018

014

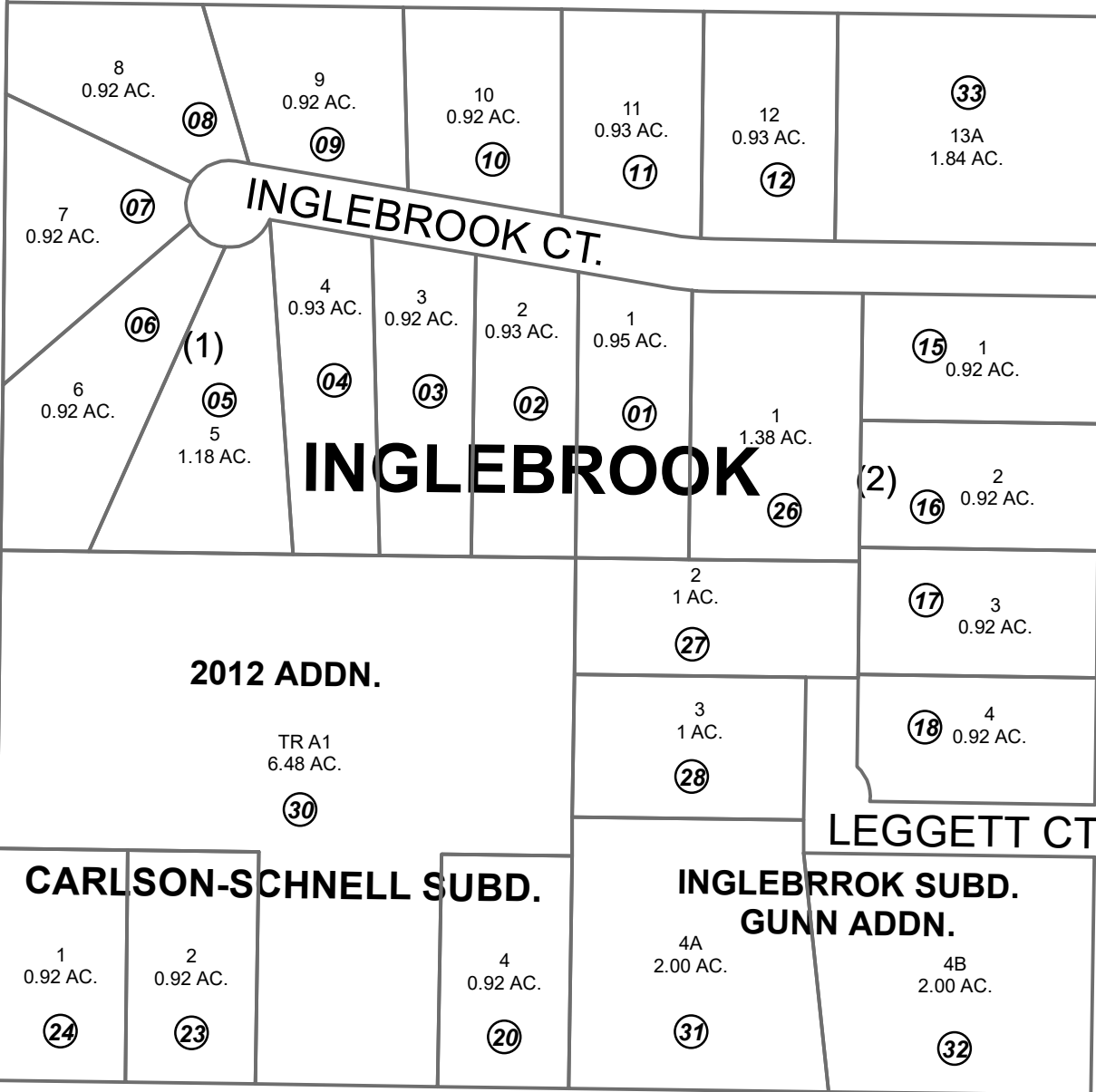
0

SONDRA AVE.

S

014

38.5 AC.
25



MISSOURI ST.

047

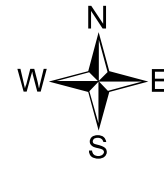
ROBINSON LOOP ROAD

012

4 3
9 10

JULY 22, 2022

For 2023 assessment roll		
Delete	Add	Revise
To		
13,14	33	



0 50 100 200 Feet

Assessor's Map
Kenai Peninsula Borough

- KN0840223 CARLSON-SCHNELL SUB
- KN0860050 INGLEBROOK SUB
- KN0880003 INGLEBROOK SUB LEGGETT 1986 ADDN
- KN2012068 CARLSON-SCHNELL SUB 2012 ADDN
- KN2019076 INGLEBROOK SUB GUNN ADDN
- KN2022030 INGLEBROOK SUB 2022 REPLAT

This map is prepared for Kenai Peninsula Borough Assessing Dept. use only and is not intended for conveyance nor is it a survey.

Note- Assessor's block Numbers Shown in Elipses
Assessor's Parcel Numbers Shown in Circles