

012

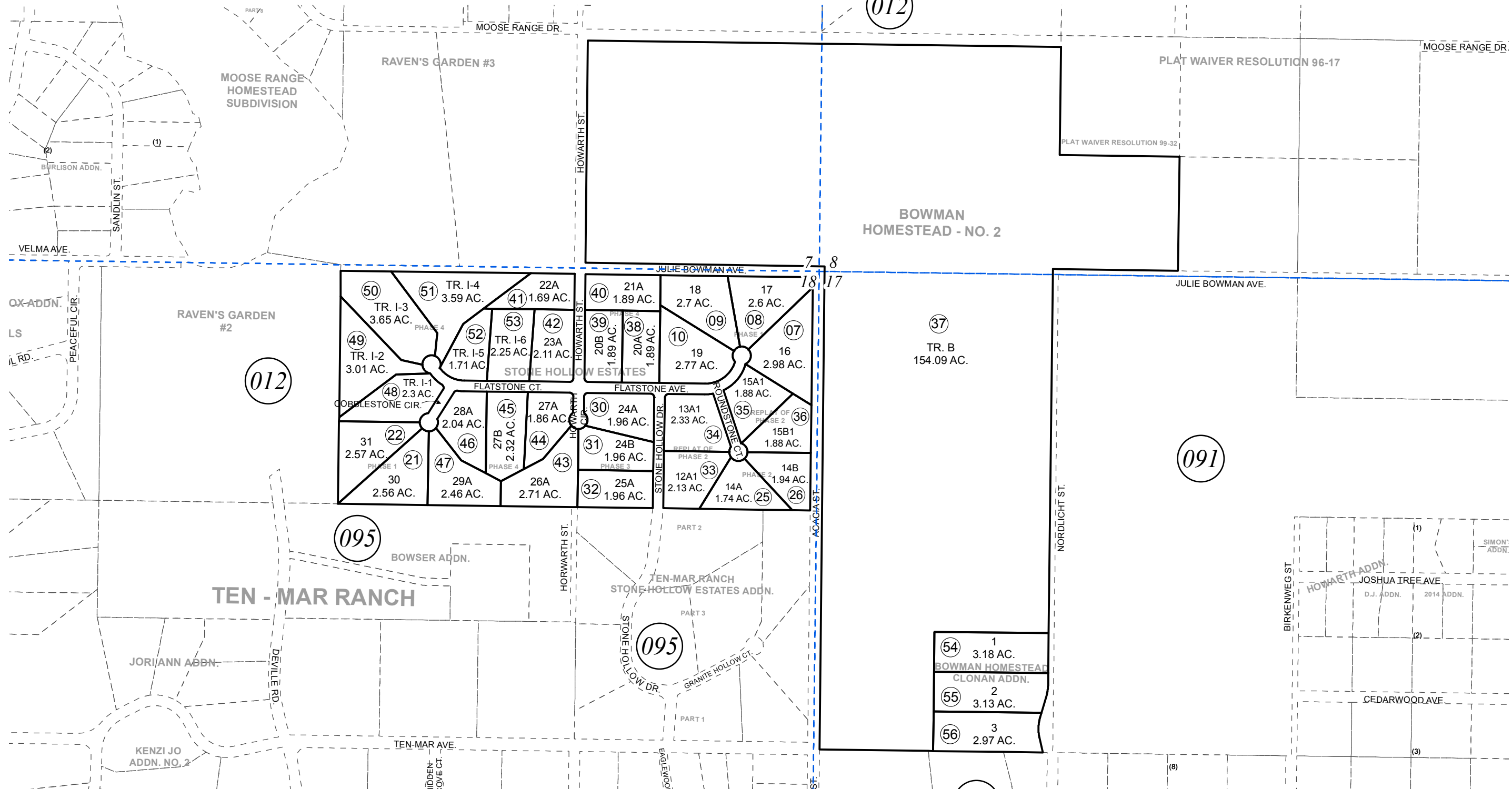
012

091

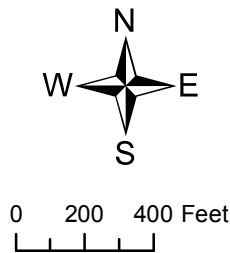
095

095

550



OCTOBER 7, 2016



For 2017 assessment roll		
Delete	Add	Revise
	To	
01	54-56	

Assessor's Map
Kenai Peninsula Borough

BOWMAN HOMESTEAD KN2003062
 STONE HOLLOW ESTATES PHASE 1 KN2008087
 STONE HOLLOW ESTATES PHASE 2 KN2008144
 STONE HOLLOW ESTATES PHASE 3 KN2009026
 STONE HOLLOW ESTATES 2009 REPLAT OF PHASE 2 KN2009089
 BOWMAN HOMESTEAD NO 2 KN2010038
 STONE HOLLOW ESTATES PHASE 4 KN2014050
 BOWMAN HOMESTEAD CLONAN ADDN KN2016051

This map is prepared for Kenai Peninsula Borough Assessing Dept. use only and is not intended for conveyance nor is it a survey.
 Note- Assessor's block Numbers Shown in Ellipses
 Assessor's Parcel Numbers Shown in Circles