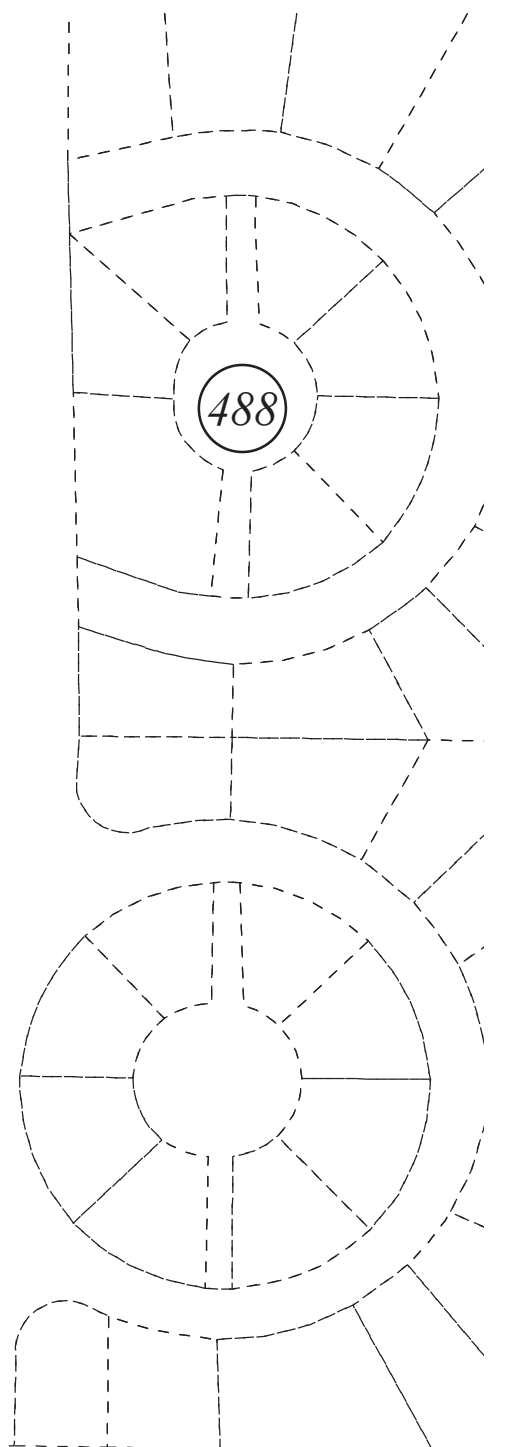
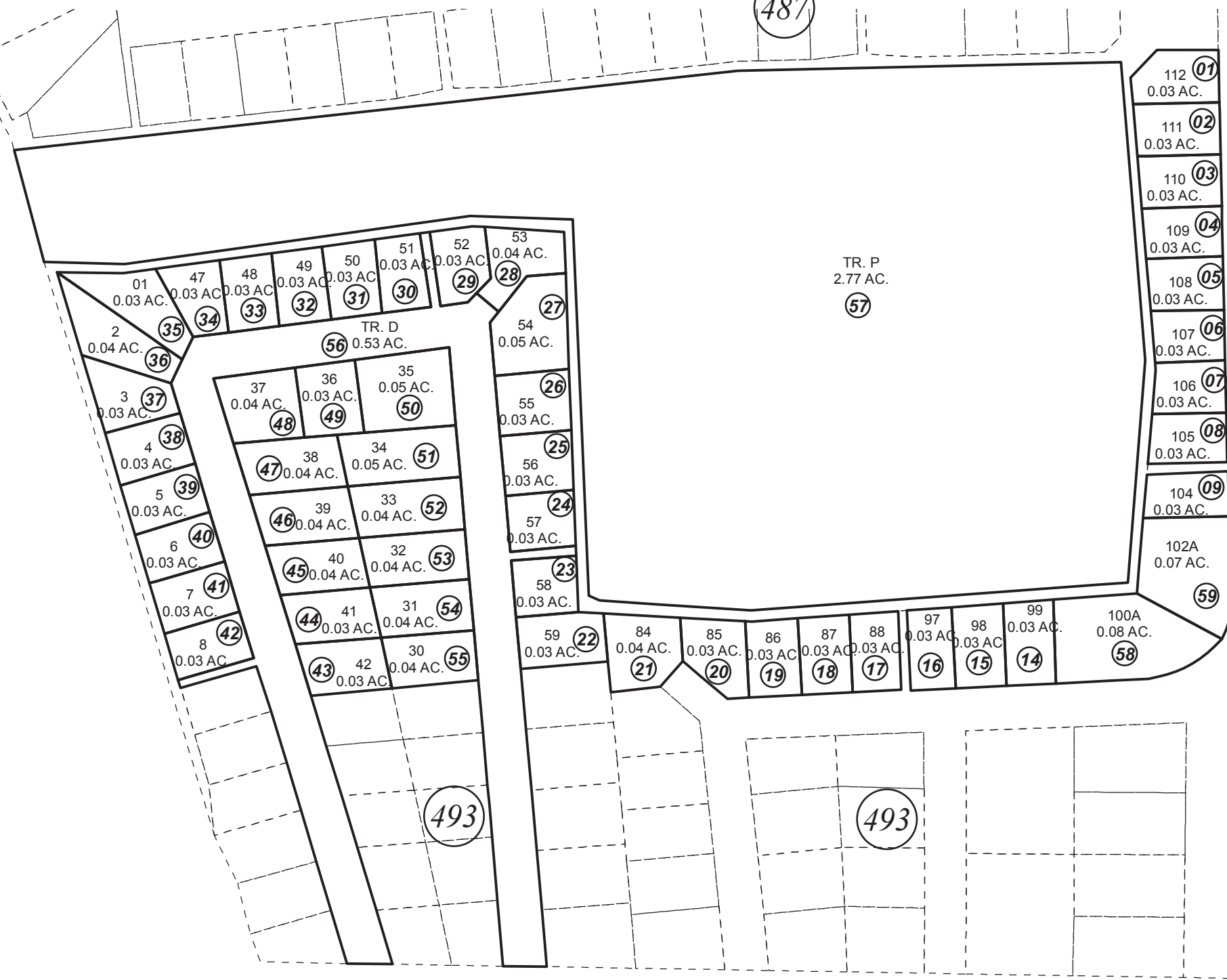


POR. SEC. 19, T05N, R10W, S.M.

487

057-489



0 25 50 100 Feet

JANUARY 17, 2018

For 2018 assessment roll		
Delete	Add	Revise
To		
10-13	58,59	

Assessor's Map
Kenai Peninsula Borough

POACHER'S COVE SUB AMENDED KN0870069
POACHER'S COVE SUB McCARL-HAGEN REPLAT KN2017073

This map is prepared for Kenai Peninsula Borough Assessing Dept. use only and is not intended for conveyance nor is it a survey.

Note- Assessor's block Numbers Shown in Ellipses
Assessor's Parcel Numbers Shown in Circles