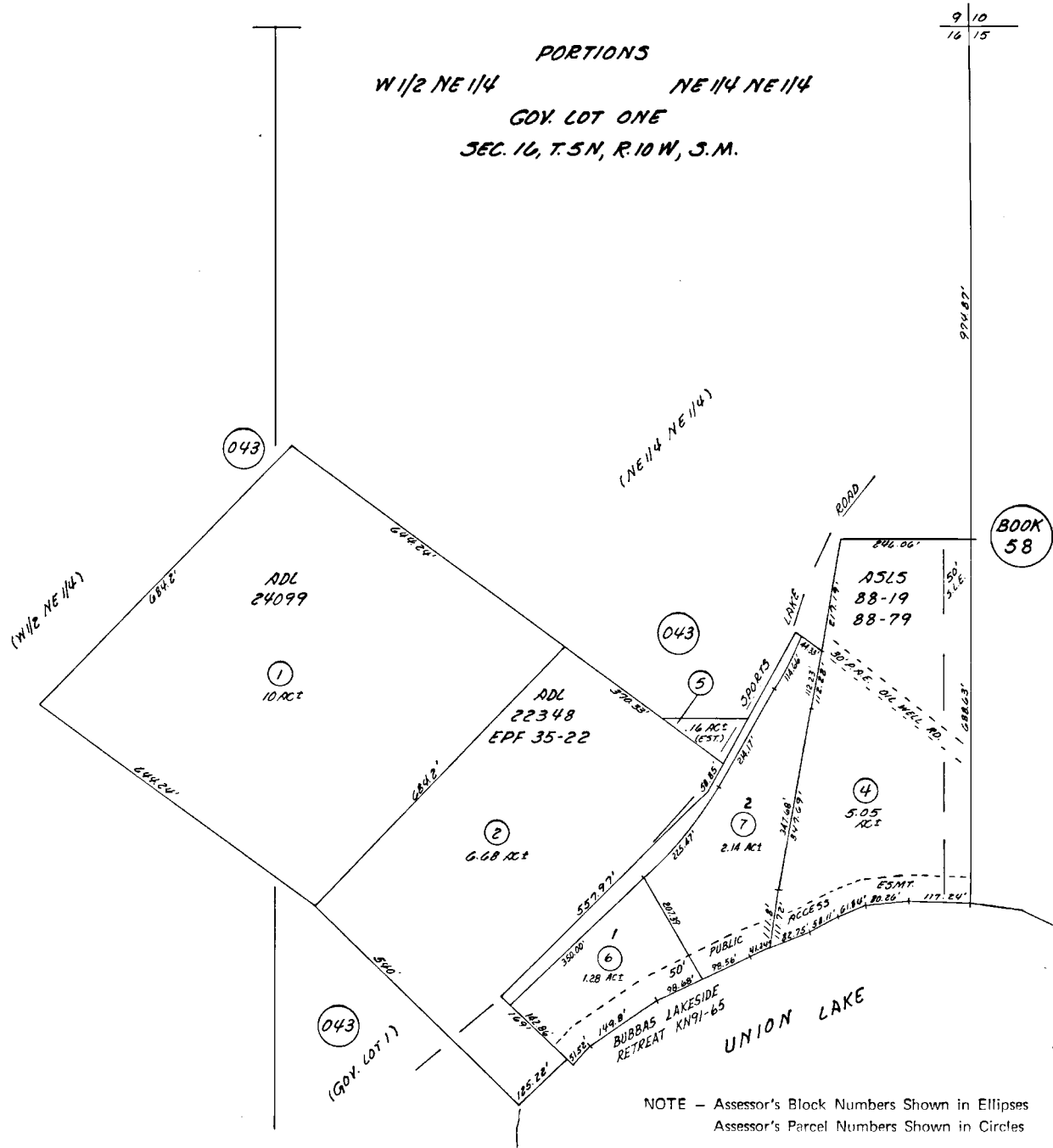


PORTIONS
 W 1/2 NE 1/4 NE 1/4 NE 1/4
 GOV. LOT ONE
 SEC. 16, T. 5 N, R. 10 W, S. M.

057-048



NOTE - Assessor's Block Numbers Shown in Ellipses
 Assessor's Parcel Numbers Shown in Circles

Assessor's Map
 Kenai Peninsula Borough, Alaska