

POR. SEC. 29, T02S, R14W, S.M.

471

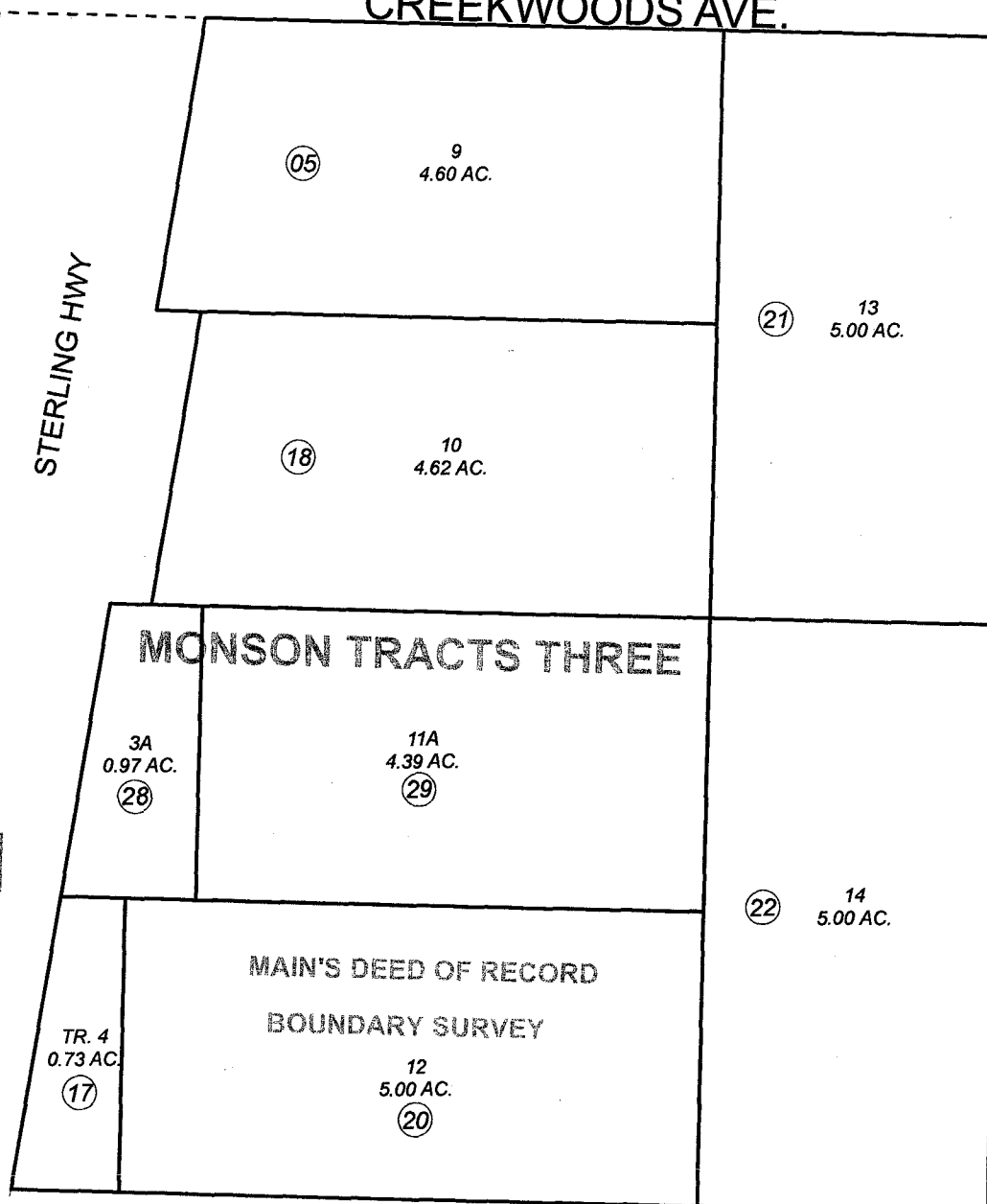
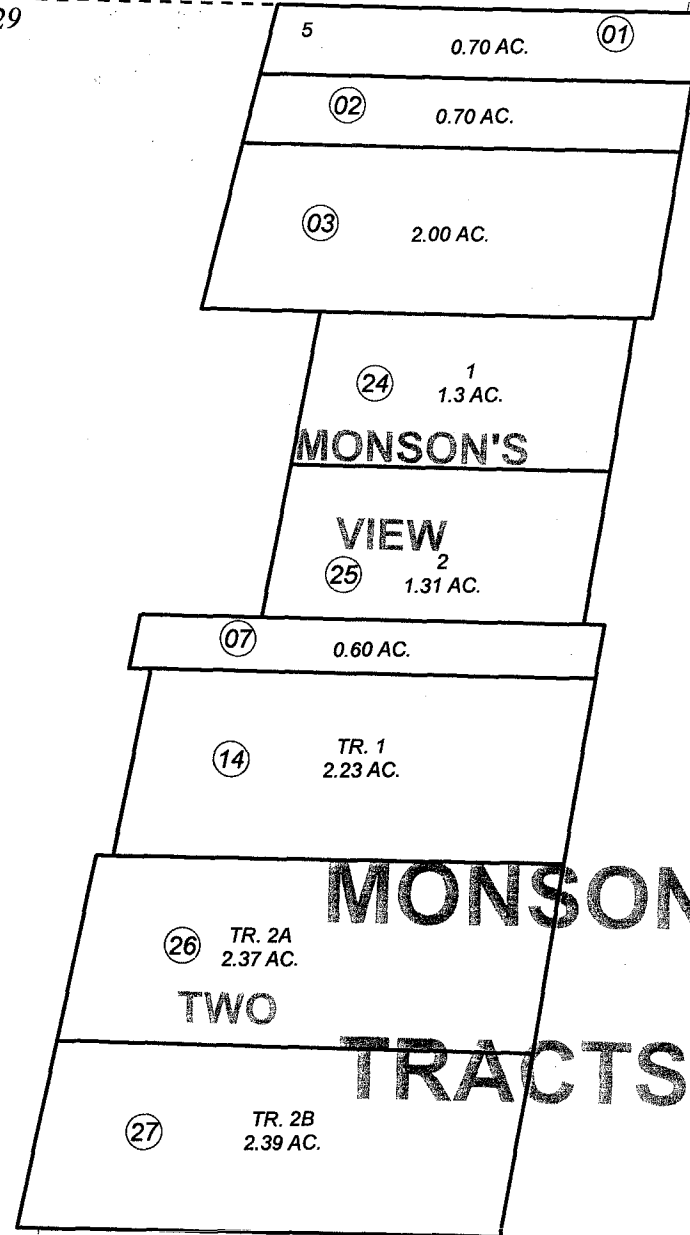
159-090

SEC. 20
SEC. 29

CREEKWOODS AVE.

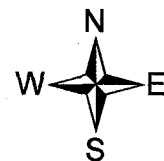
WILDI

COOK
INLET



080

080



JUNE 11, 2008

For 2009 assessment roll

Delete	Add	Revise
	To	
8, 16, 19	28, 29	

Assessor's Map
Kenai Peninsula Borough

MONSON TRACTS SUB HM0790082
 MONSON'S VIEW SUB HM0840092
 MONSON TRACTS TWO HM2006101
 MONSON TRACTS THREE HM2008006

This map is prepared for Kenai Peninsula Borough Assessing Dept. use only and is not intended for conveyance nor is it a survey.

Note- Assessor's block Numbers Shown in Ellipses
Assessor's Parcel Numbers Shown in Circles