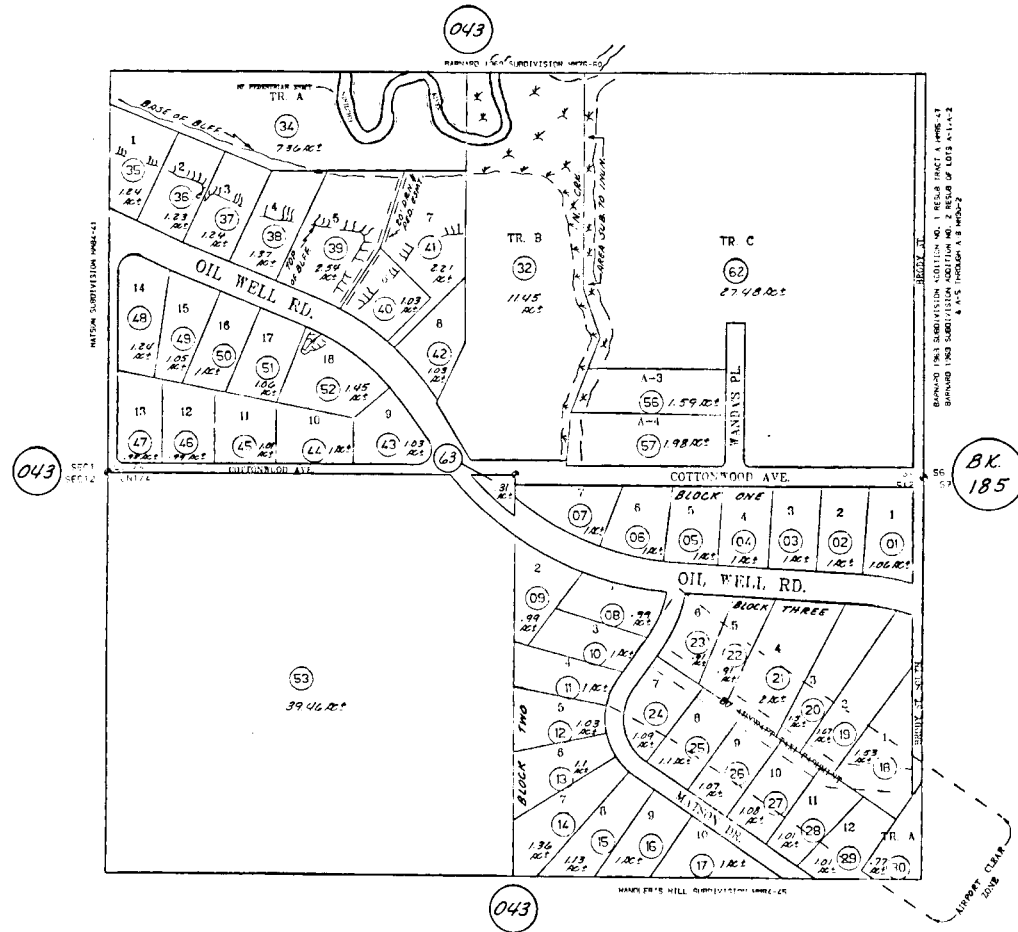


S1/2 SE1/4 SEC. 1 & N1/2 NE1/4 SEC. 12, T.2S, R.14W, S.M. 159-61



NOTE- Assessor's Block Numbers Shown in Ellipses  
 Assessor's Parcel Numbers Shown in Circles

Assessor's Map  
 Kenai Peninsula Borough, Alaska