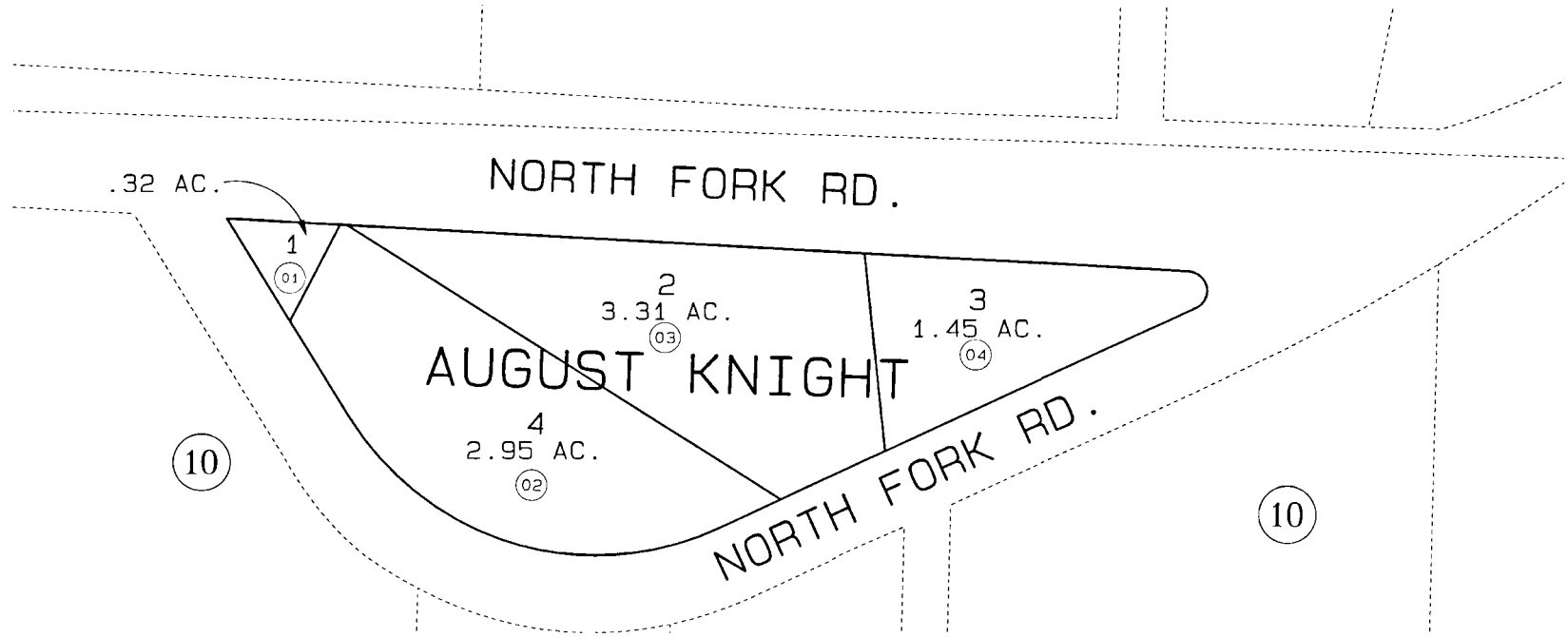


BK
165



DATE: JULY 22, 1996

FOR 1997 ASSESSMENT ROLL		
DELETE	ADD	REVISED

TO

1 - 4

Assessor's Map
Kenai Peninsula Borough

AUGUST KNIGHT IIM810007

THIS MAP IS PREPARED FOR KENAI PENINSULA BOROUGH ASSESSING DEPT. USE ONLY AND IS NOT INTENDED FOR ANY OTHER USE OR REPRESENTATION

NOTE - Assessor's Block Numbers Shown In Ellipses
Assessor's Parcel Numbers Shown In Circles