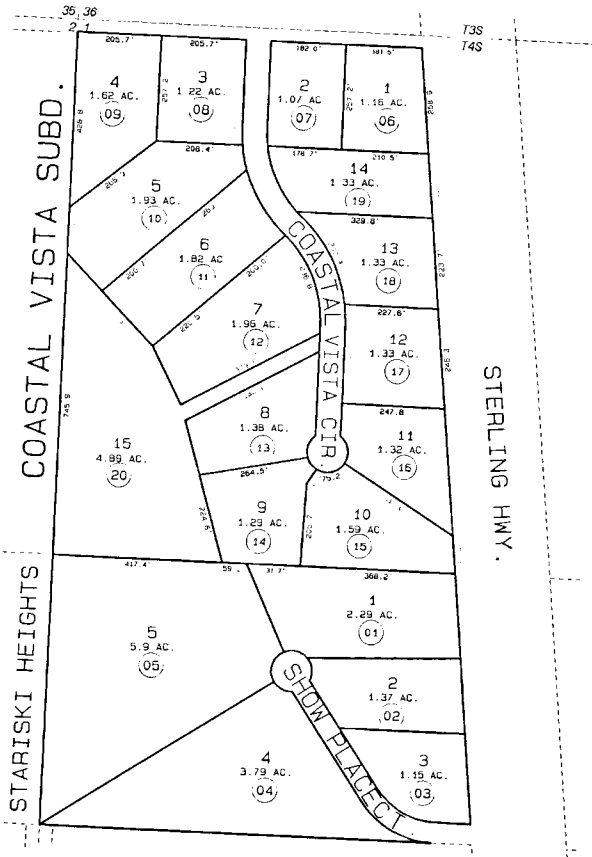


BK.
159



011

012

011



DATE: OCT. 25, 1995
 FOR 1996 ASSESSMENT ROLL
 DELETE ADD REVISED
 TO
 16501101 6-20

STARISKI HEIGHTS IIM810035
 COASTAL VISTA IIM950021
 Assessor's Map
 Kenai Peninsula Borough

1" = 300'

THIS MAP IS PREPARED FOR KENAI PENINSULA BOROUGH ASSESSING DEPT USE ONLY AND IS NOT INTENDED FOR ANY OTHER USE OR REPRESENTATION

NOTE - Assessor's Block Numbers Shown In Ellipses
 Assessor's Parcel Numbers Shown In Circles