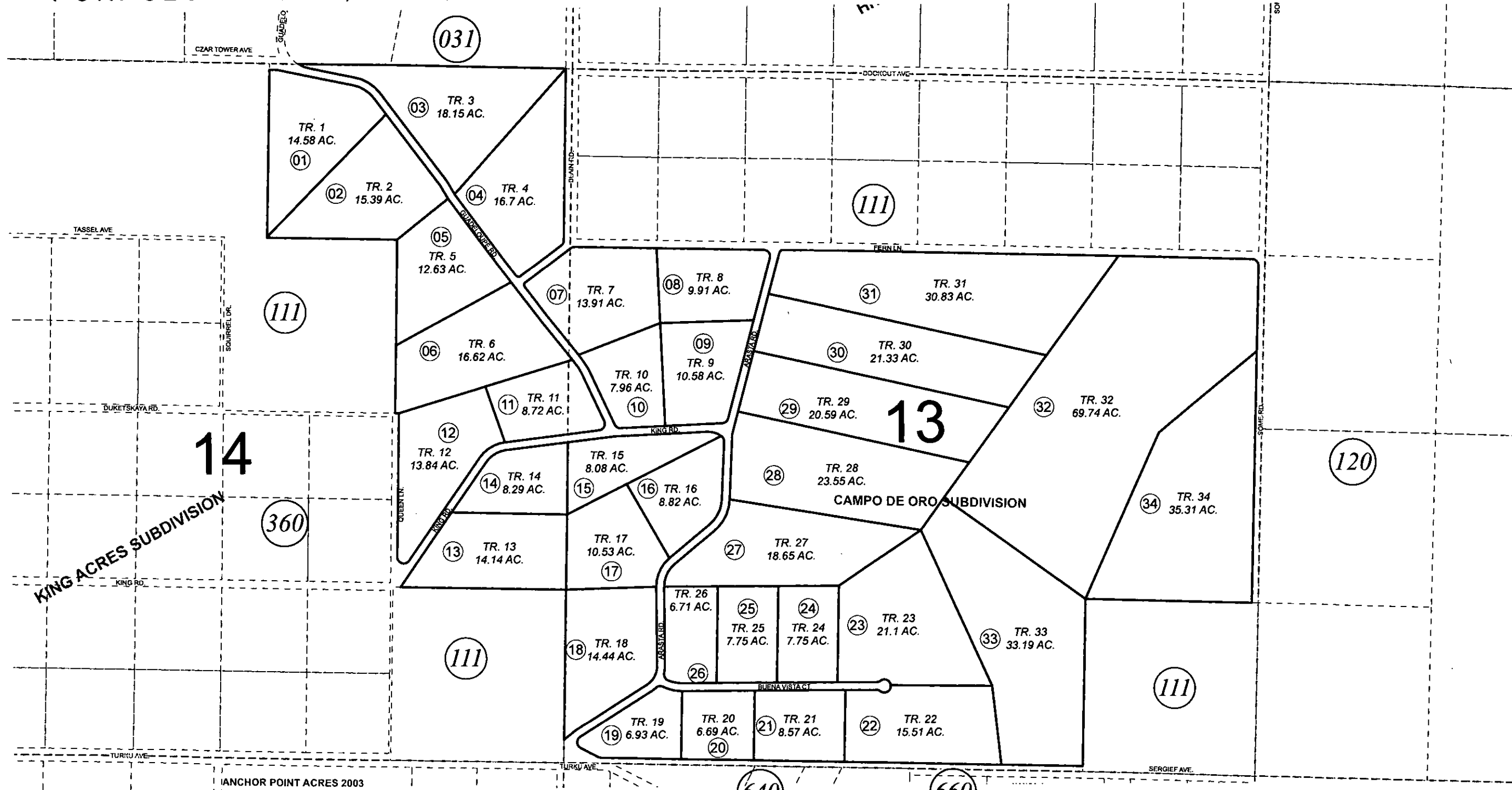


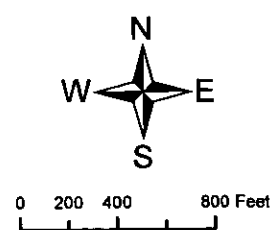
POR. SEC. 13 & 14, T04S, R14W, S.M.

165-113



SEPTEMBER 2, 2011

For 2012 assessment roll		
Delete	Add	Revise
To		
		02-05, 09,12,19
(ACREAGE CHANGE)		



Assessor's Map
Kenai Peninsula Borough
CAMPO DE ORO SUB HM2000048

This map is prepared for Kenai Peninsula Borough Assessing Dept. use only and is not intended for conveyance nor is it a survey.
Note- Assessor's block Numbers Shown in Elipses
Assessor's Parcel Numbers Shown in Circles