

POR. SEC. 22, T04S, R14W, S.M.

165-380

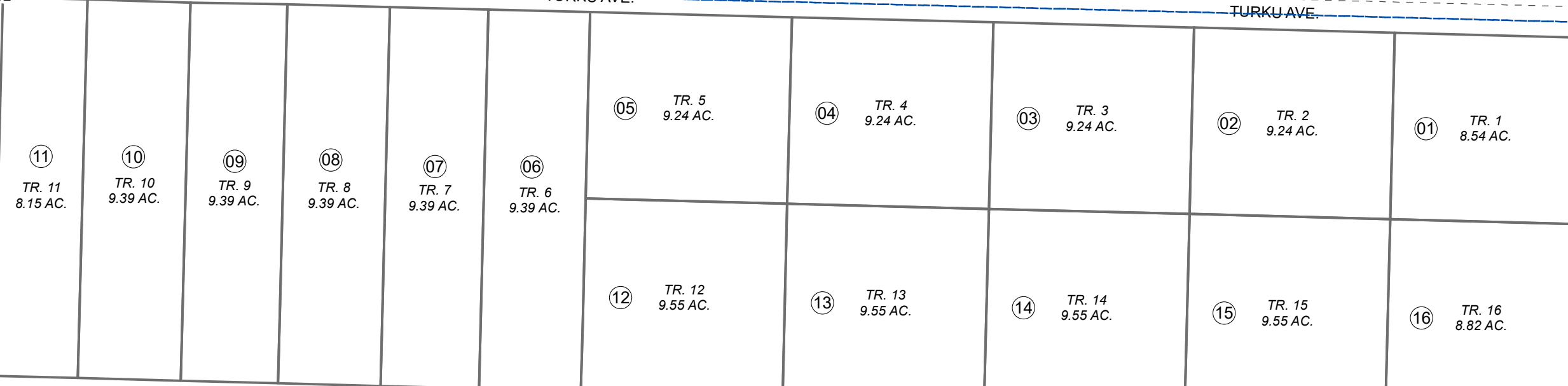
111

16 15
21, 22

15 14
22, 23

TURKU AVE.

TURKU AVE.

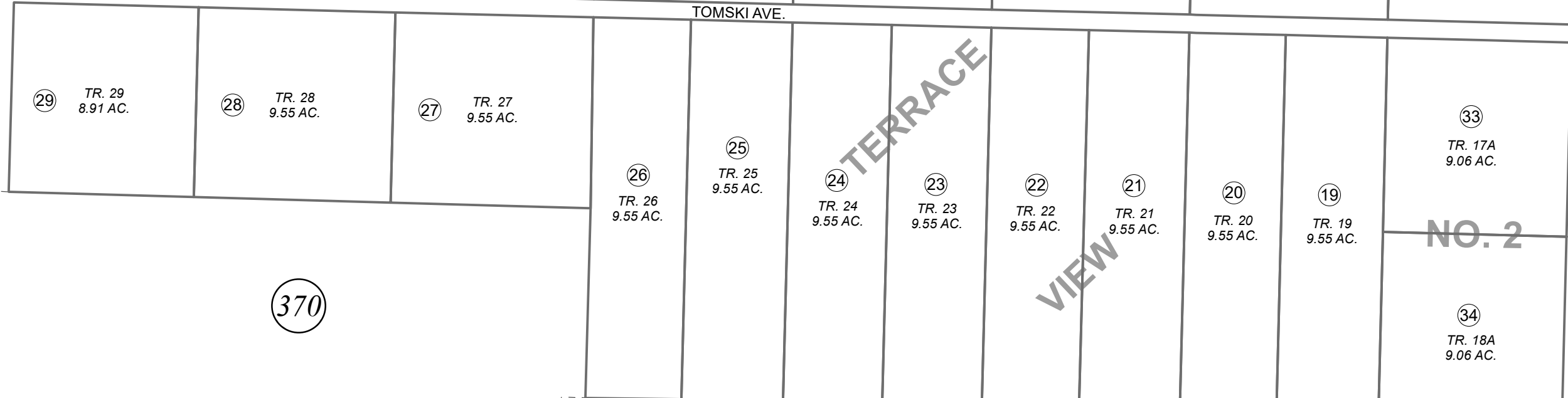


100

112

KOMSOLMOL ST.

TOMSKI AVE.



370

370

UNIVERSE AVE.



0 100 200 400 Feet

JULY 29, 2021

For 2021 assessment roll		
Delete	Add	Revise
To		
30-32	165-370+	

Assessor's Map
Kenai Peninsula Borough

TERRACE VIEW SUB HM0742194
TERRACE VIEW NO 2 HM2010033

This map is prepared for Kenai Peninsula Borough Assessing Dept. use only and is not intended for conveyance nor is it a survey.

Note- Assessor's block Numbers Shown in Ellipses
Assessor's Parcel Numbers Shown in Circles