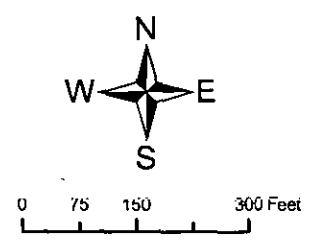
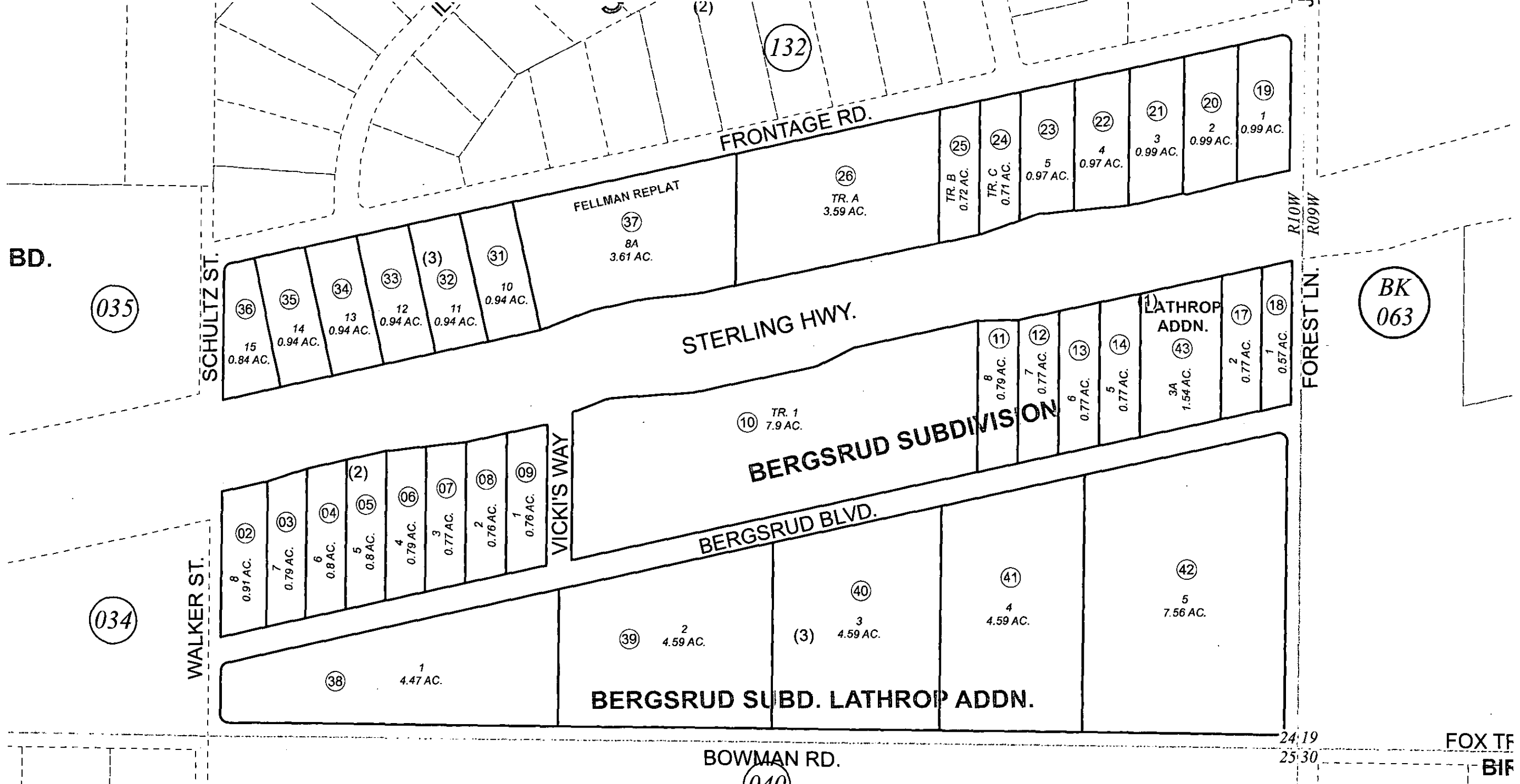


POR. SE1/4 SEC. 24, T05N, R10W, S.M.

058-131



DECEMBER 30, 2011

For 2012 assessment roll		
Delete	Add	Revise
	To	
01, 15, 16	38-43	

Assessor's Map
Kenai Peninsula Borough

BERGSRUD SUB ADDN KN0001142
 JAMES A BERGSRUD HOMESTEAD KN0001420
 BERGSRUD SUB AMENDED KN0001644
 JAMES A BERGSRUD HOMESTEAD KN0001750
 STERLING ESTATES KN0760118
 STERLING ESTATES FELLMAN REPLAT KN0990001
 BERGSRUD SUB LATHROP ADDN KN2011093

Note- Assessor's block Numbers Shown in Elipses
 Assessor's Parcel Numbers Shown in Circles

This map is prepared for Kenai Peninsula Borough Assessing Dept. use only and is not intended for conveyance nor is it a survey.