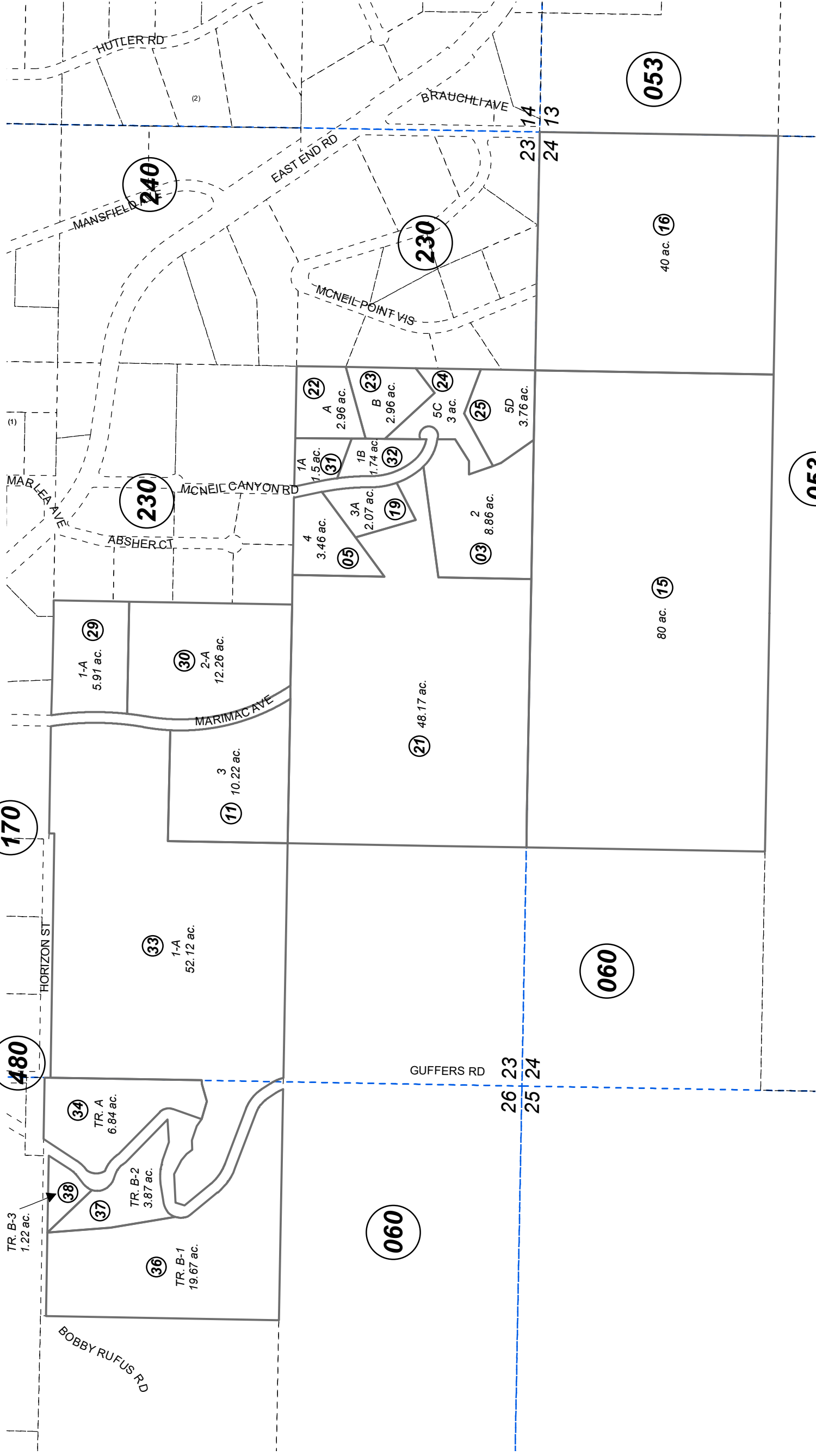


SE1/4NE1/4 & SE1/4 SEC. 23 & W1/2W1/2 SEC. 24, T05S, R12W, S.M. 172-380



170

480

240

230

230

053

053

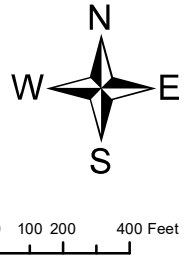
060

060

JANUARY 17, 2023

For 2022 assessment roll	
Delete	Revise
35	36-38

- MCNEIL POINT SUB HM08000095
- KILCHER PARK ESTATES SUB HM0900012
- MCNEIL POINT NO 6 HM0910029
- VON ZIEGESAR-MATKIN SUB HM0920057
- MCNEIL POINT SUB LOT 5 REPLAT HM0990011
- KILCHER PARK ESTATES SUB BURTON ADDN HM2003020
- KILCHER PARK ESTATES SUB NO 2 HM2004059
- MCNEIL POINT SUB 2005.ADDN HM2005073
- CATKIN SUB HM2009050
- CATKIN SUB 2021 REPLAT HM2022038



Assessor's Map  
Kenai Peninsula Borough

Note- Assessor's block Numbers Shown in Ellipses  
Assessor's Parcel Numbers Shown in Circles

This map is prepared  
for Kenai Peninsula  
Borough Assessing Dept.  
use only and is not  
intended for conveyance  
nor is it a survey.