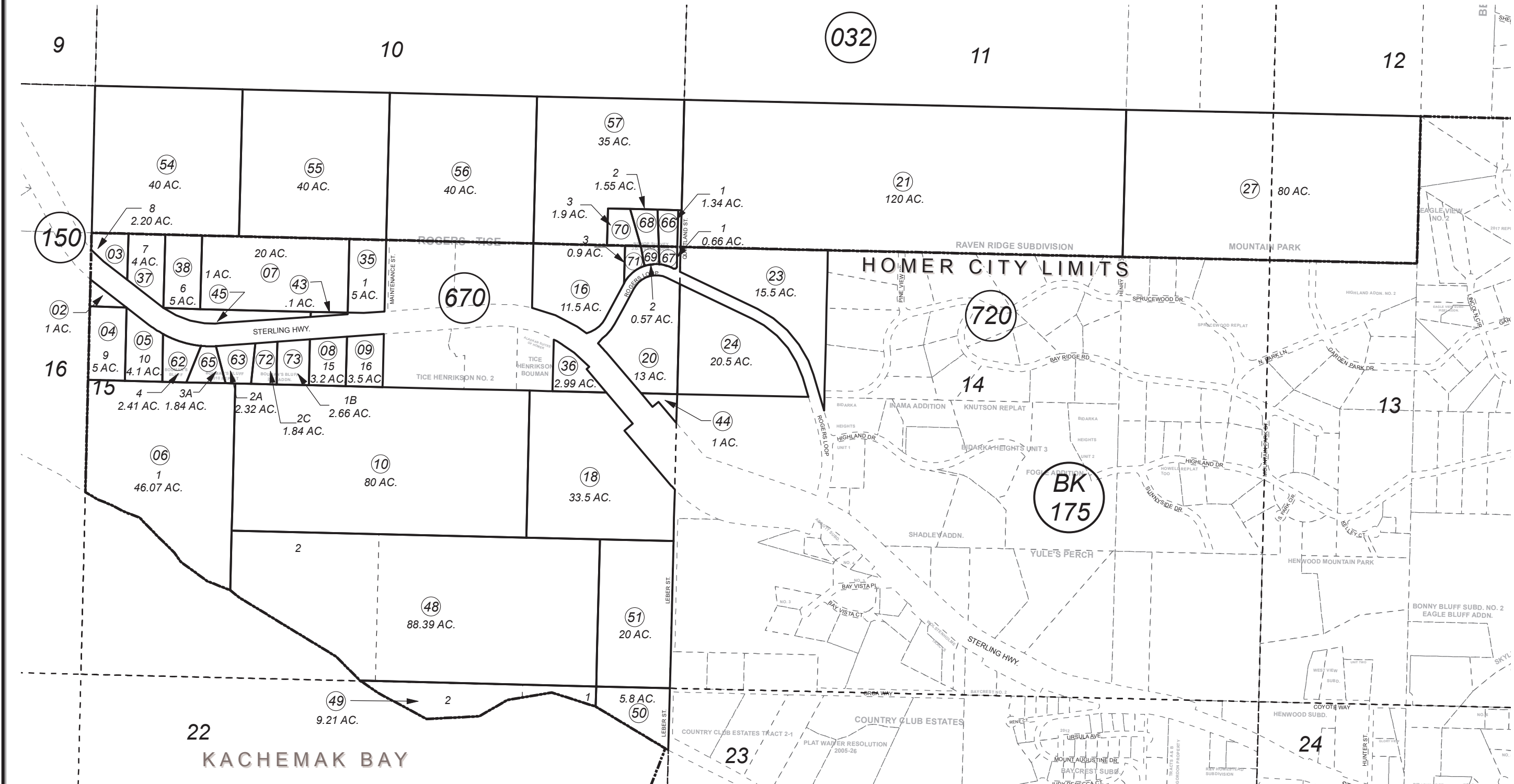


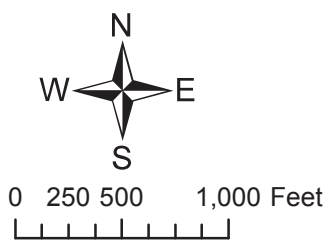
POR. SEC. 13-15, T06S, R14W, S.M.

173-160



DECEMBER 14, 2017

For 2018 assessment roll		
Delete	Add	Revise
To		
59,64	72,73	



Assessor's Map  
Kenai Peninsula Borough

BISHOP SURVEY HM0690532  
 BOUMAN'S BLUFF HM2006072  
 BOUMAN'S BLUFF 2010 REPLAT HM2011013  
 BISHOP SURVEY J.G. EVANS ADDN HM2011022  
 BOUMAN'S BLUFF 2017 ADDN HM2017051

This map is prepared for Kenai Peninsula Borough Assessing Dept. use only and is not intended for conveyance nor is it a survey.  
 Note- Assessor's block Numbers Shown in Ellipses  
 Assessor's Parcel Numbers Shown in Circles