

NW1/4 SEC. 3, T06S, R14W, S.M.

BK
171

173-034

33 34 T05S
ECKERT AVE 3 4 T06S

ECKERT AVE.

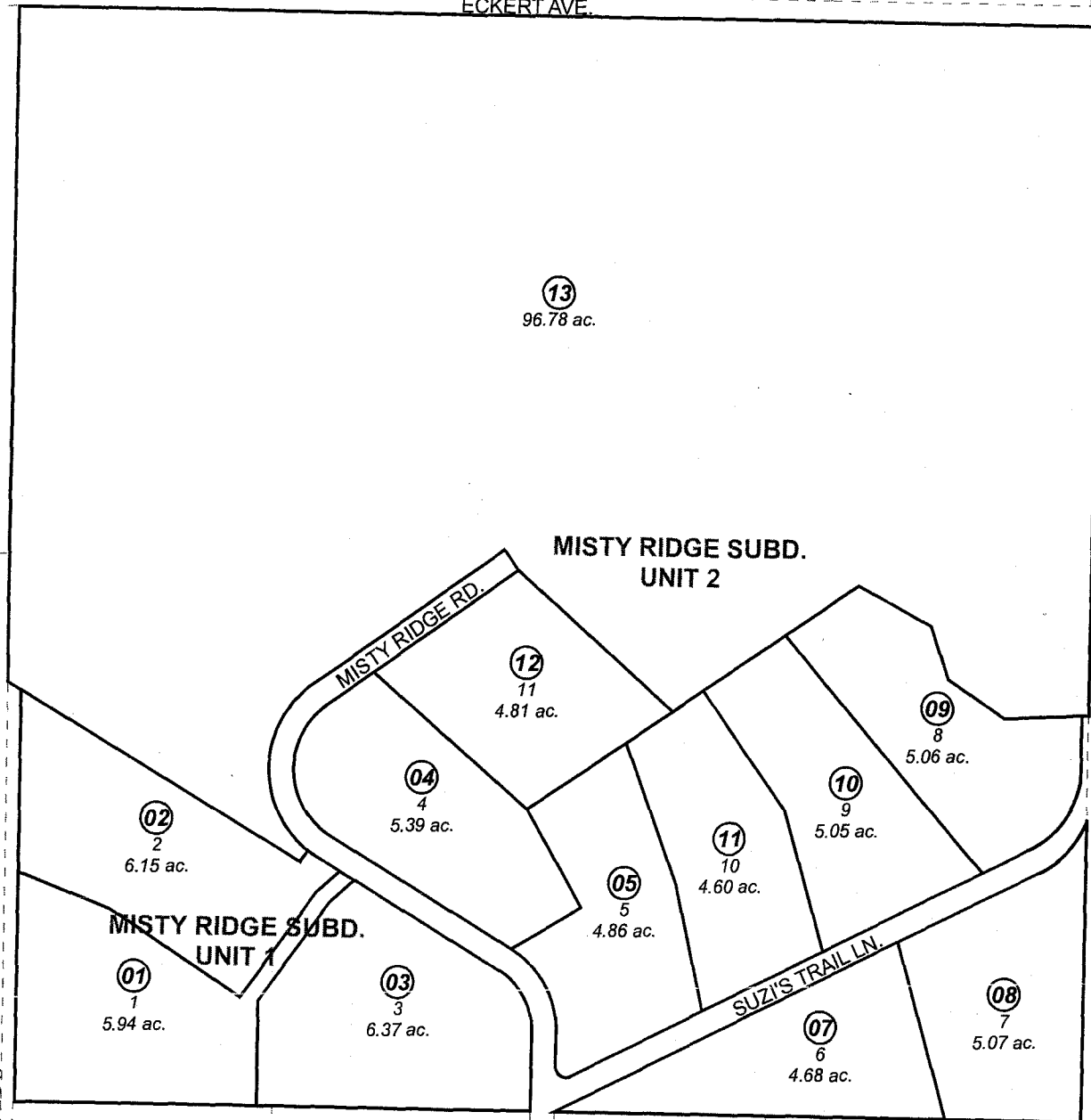
031

022

UNIT 2

PLAT WAIVER RES 90-16

530



STACEY ST.

210

530

LAURA'S RD.



SEPTEMBER 12, 2006

For 2007 assessment roll		
Delete	Add	Revise
	To	
6	7-13	

Assessor's Map
Kenai Peninsula Borough

MISTY RIDGE SUBD UNIT 1 HM2001051
MISTY RIDGE SUBD UNIT 2 HM2006021

This map is prepared for Kenai Peninsula Borough Assessing Dept. use only and is not intended for conveyance nor is it a survey.

Note- Assessor's block Numbers Shown in Ellipses
Assessor's Parcel Numbers Shown in Circles