



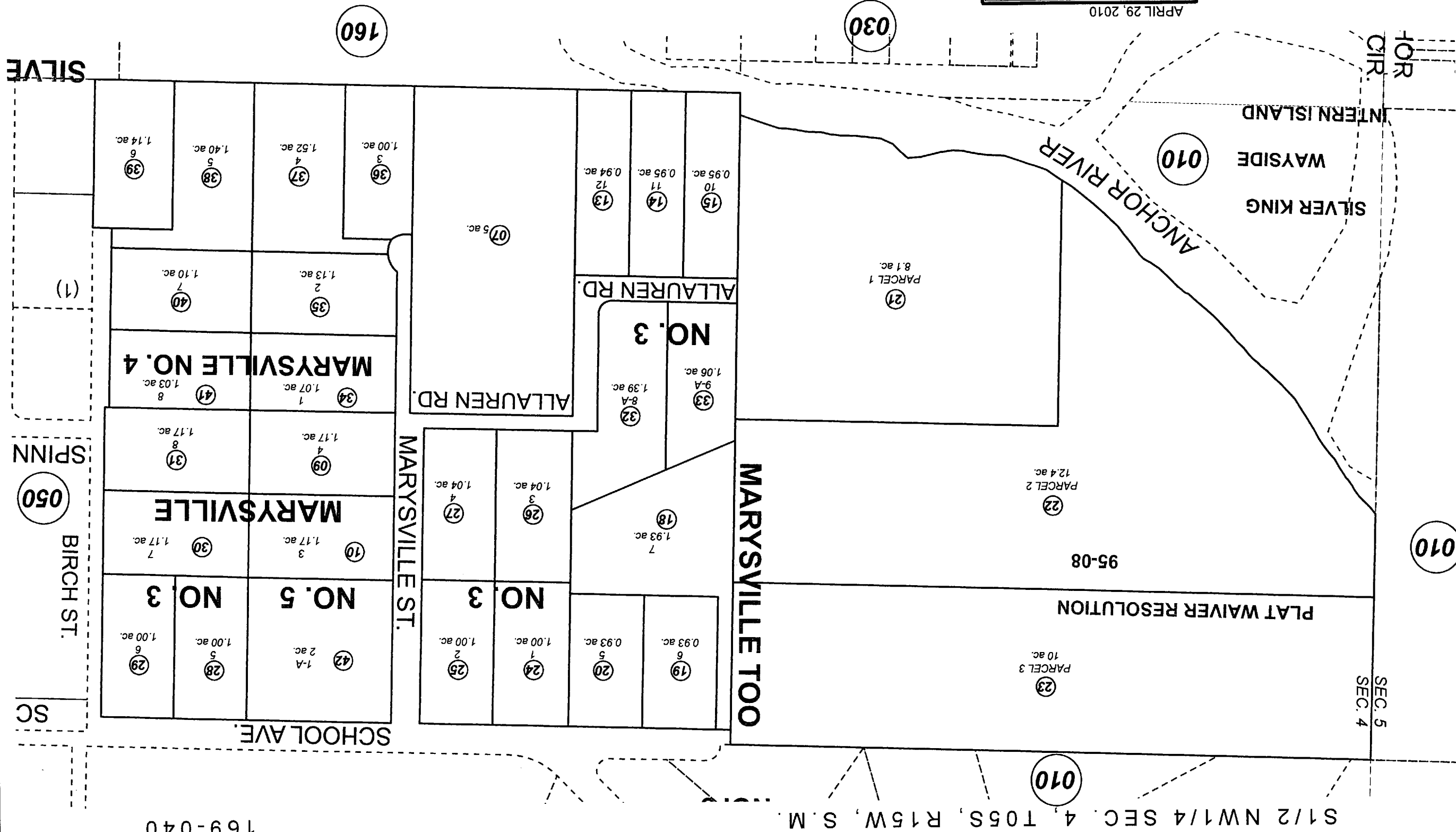
For 2011 assessment roll		
Delete	Add	Revise
To	11,12	42

APRIL 29, 2010

Assessor's Map  
Kenai Peninsula Borough

MARYSVILLE SUB HMM0860063  
 MARYSVILLE TOO SUB HMM0860093  
 MARYSVILLE SUB NO 3 HMM2002077  
 MARYSVILLE SUB NO 4 HM2007009  
 MARYSVILLE 33 FT. EASEMENT VACATION REPLAT HM2007068  
 MARYSVILLE NO 5 HM2010008

This map is prepared for Kenai Peninsula Borough Assessing Dept. use only and is not intended for conveyance nor is it a survey.  
 Note- Assessor's block Numbers Shown in Ellipses  
 Assessor's Parcel Numbers Shown in Circles



169-040

S1/2 NW1/4 SEC. 4, T05S, R15W, S.M.