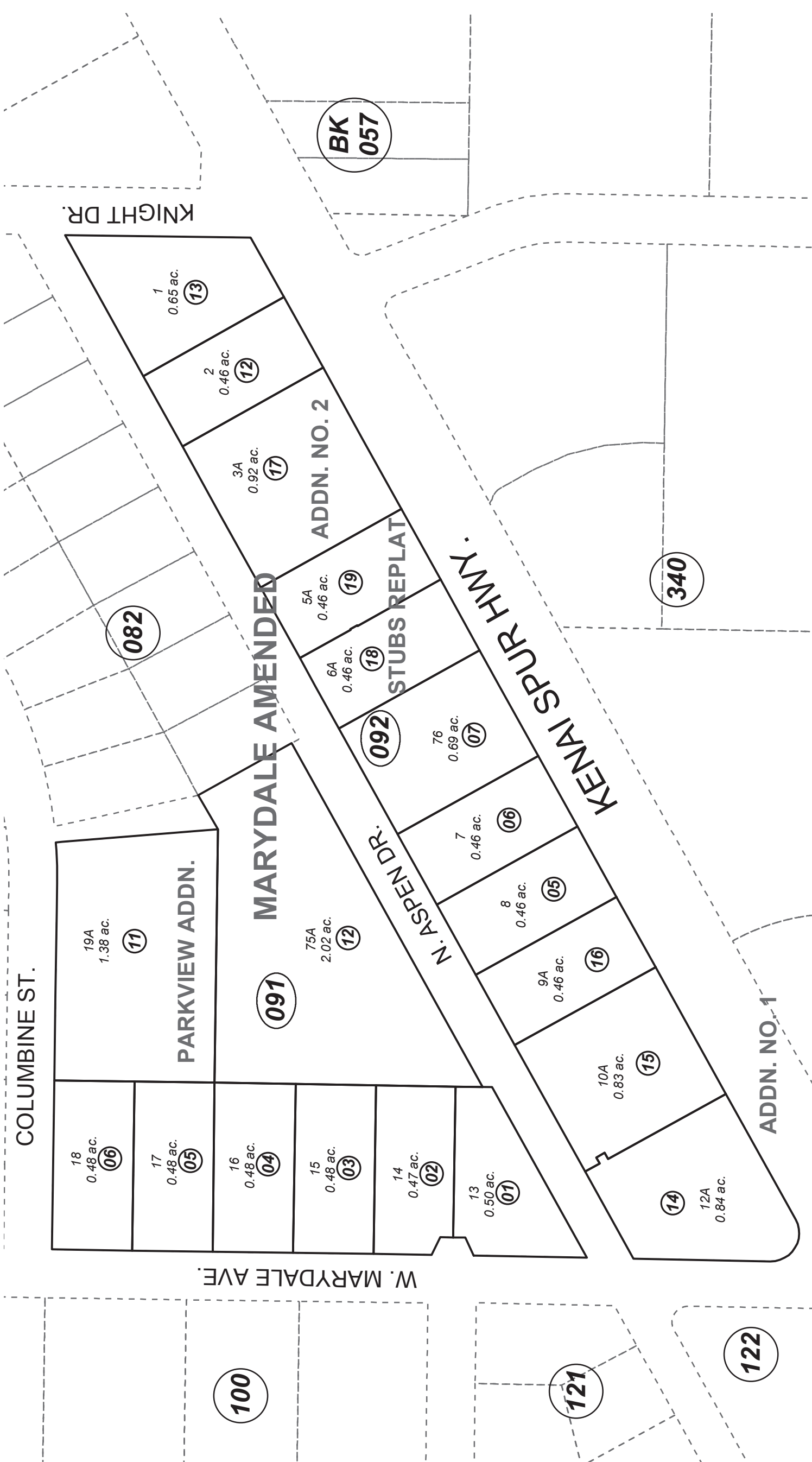


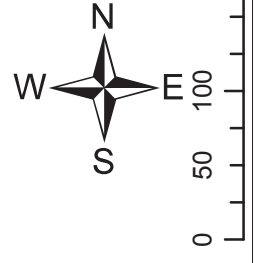
POR. SEC. 29, T05N, R10W, S.M.

059-090



JANUARY 9, 2017

For 2018 assessment roll		
Delete	Add	Revise
	09110	09112
	To	



MARYDALE SUB AMENDED KN0001010
 MARYDALE SUB AMENDED ADDN 1 KN0860034
 MARYDALE SUBD AMENDED ADDN NO 2 KN0950081
 MARYDALE SUB PARKVIEW ADDN KN2002051
 MARYDALE SUB STUBS REPLAT KN2010056
 N ASPEN DR R/W ACQUISITION PLAT KN2017082

Assessor's Map
 Kenai Peninsula Borough

200 Feet

0 50 100 200 Feet

Note- Assessor's block Numbers Shown in Ellipses
 Assessor's Parcel Numbers Shown in Circles

This map is prepared
 for Kenai Peninsula
 Borough Assessing Dept.
 use only and is not
 intended for conveyance
 nor is it a survey.