

231-070

T03S, R23W, R24W, S.M.

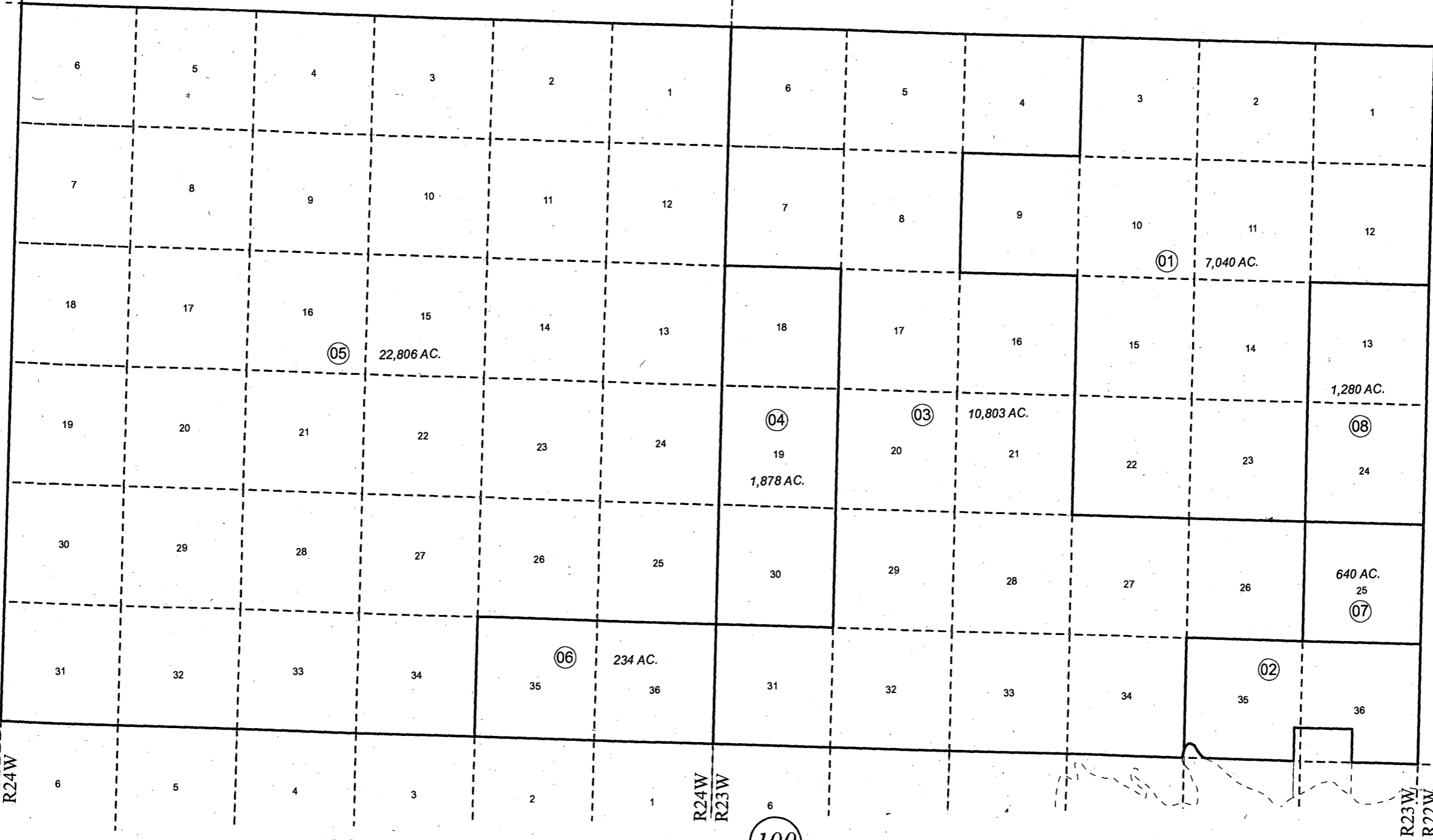
T02S
T03S

220

040

080

100



DECEMBER 7, 2010

For 2011 assessment roll		
Delete	Add	Revise
To		
07, 08		
03		
(ACREAGE CHANGE)		



Assessor's Map
Kenai Peninsula Borough

This map is prepared for Kenai Peninsula Borough Assessing Dept. use only and is not intended for conveyance nor is it a survey.

Note- Assessor's block Numbers Shown in Elipses
Assessor's Parcel Numbers Shown in Circles