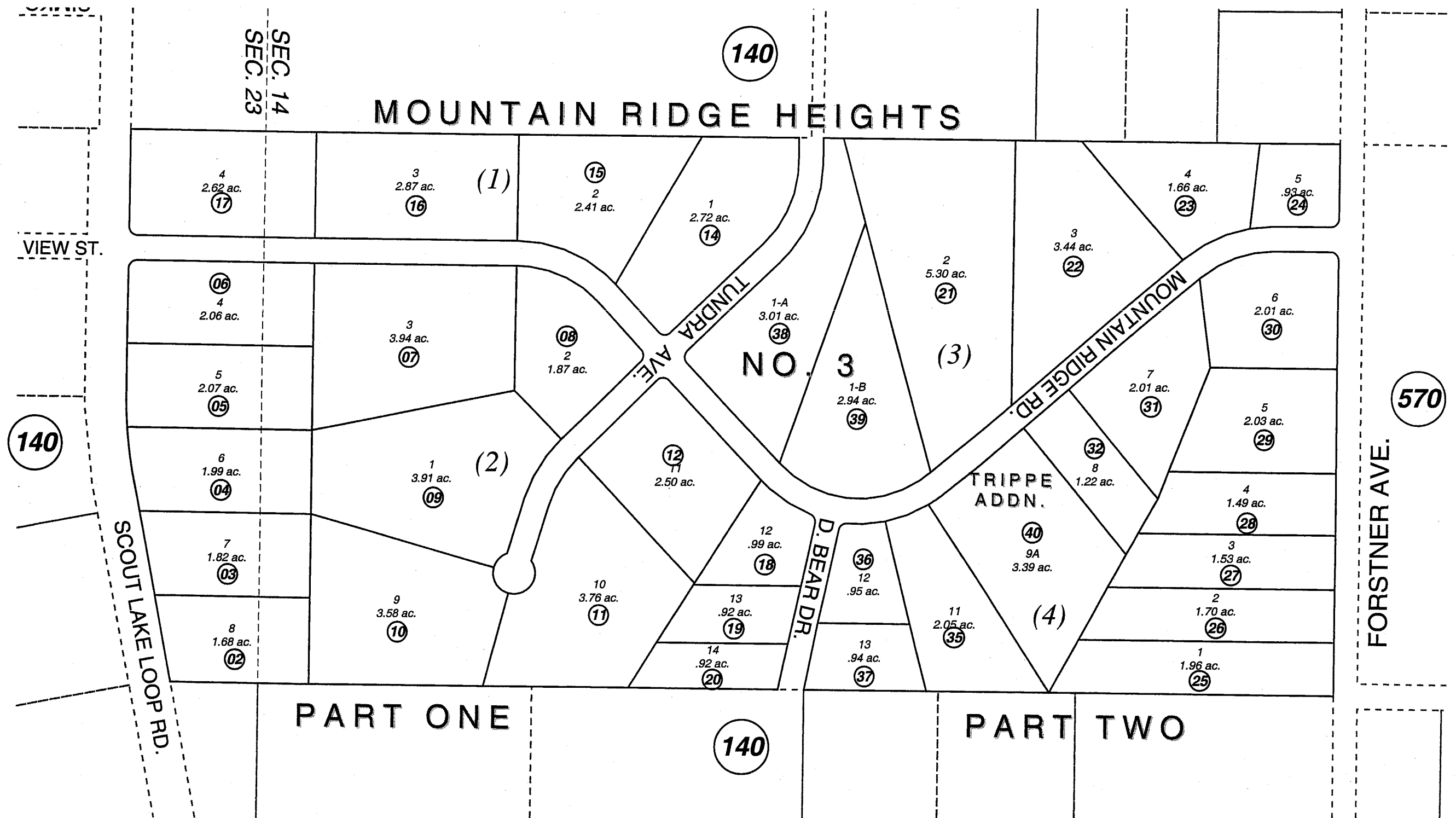


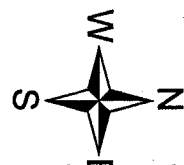
W1/2 SE1/4 SEC. 14 & POR. SEC. 23, T05N, R09W, S.M.

063-590



JUNE 3, 2003

For 2004 assessment roll		
Delete	Add	Revise
	To	
33,34	40	



Assessor's Map
Kenai Peninsula Borough

MOUNTAIN RIDGE HEIGHTS SUB PART 1 KN0770162
 MOUNTAIN RIDGE HEIGHTS SUB PART 2 KN0840123
 MOUNTAIN RIDGE HEIGHTS SUB PART 3 KN0840219
 MOUNTAIN RIDGE HEIGHTS SUB TRIPPE ADDN KN0840227

Note- Assessor's block Numbers Shown in Ellipses
 Assessor's Parcel Numbers Shown in Circles

This map is prepared for Kenai Peninsula Borough Assessing Dept. use only and is not intended for conveyance nor is it a survey.