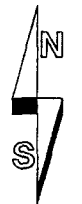
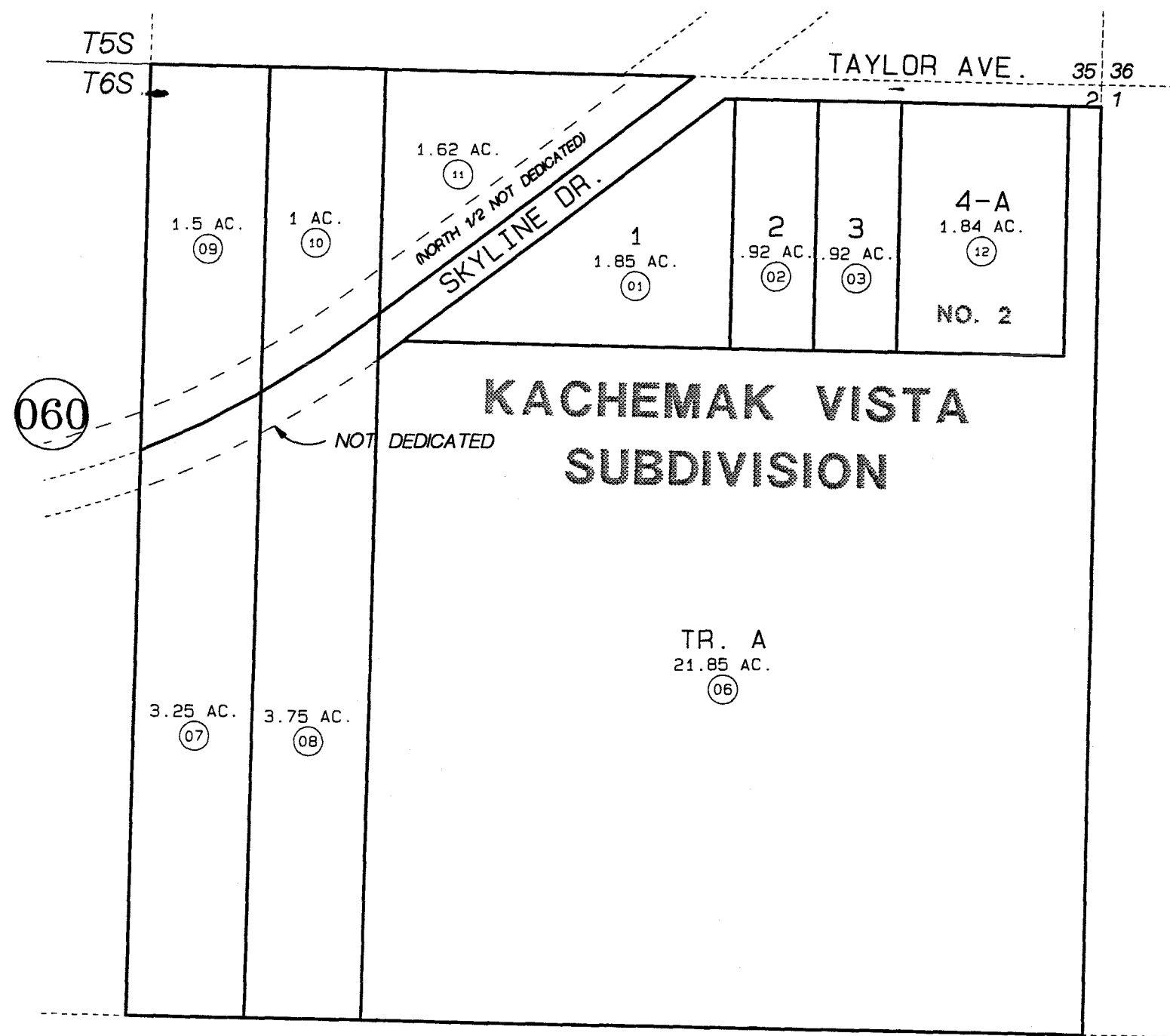


132



DATE: OCT. 14, 1997

FOR 19 98 ASSESSMENT ROLL		
DELETE	ADD	REVISED
	TO	
4,5		12

Assessor's Map
Kenai Peninsula Borough

KACHEMAK VISTA SUB. HM830093
KACHEMAK VISTA SUB. NO. 2 HM970048

060

THIS MAP IS PREPARED
FOR KENAI PENINSULA
BOROUGH ASSESSING DEPT.
USE ONLY AND IS NOT
INTENDED FOR ANY
OTHER USE OR REPRESENTATION

NOTE - Assessor's Block Numbers Shown In Ellipses
Assessor's Parcel Numbers Shown In Circles