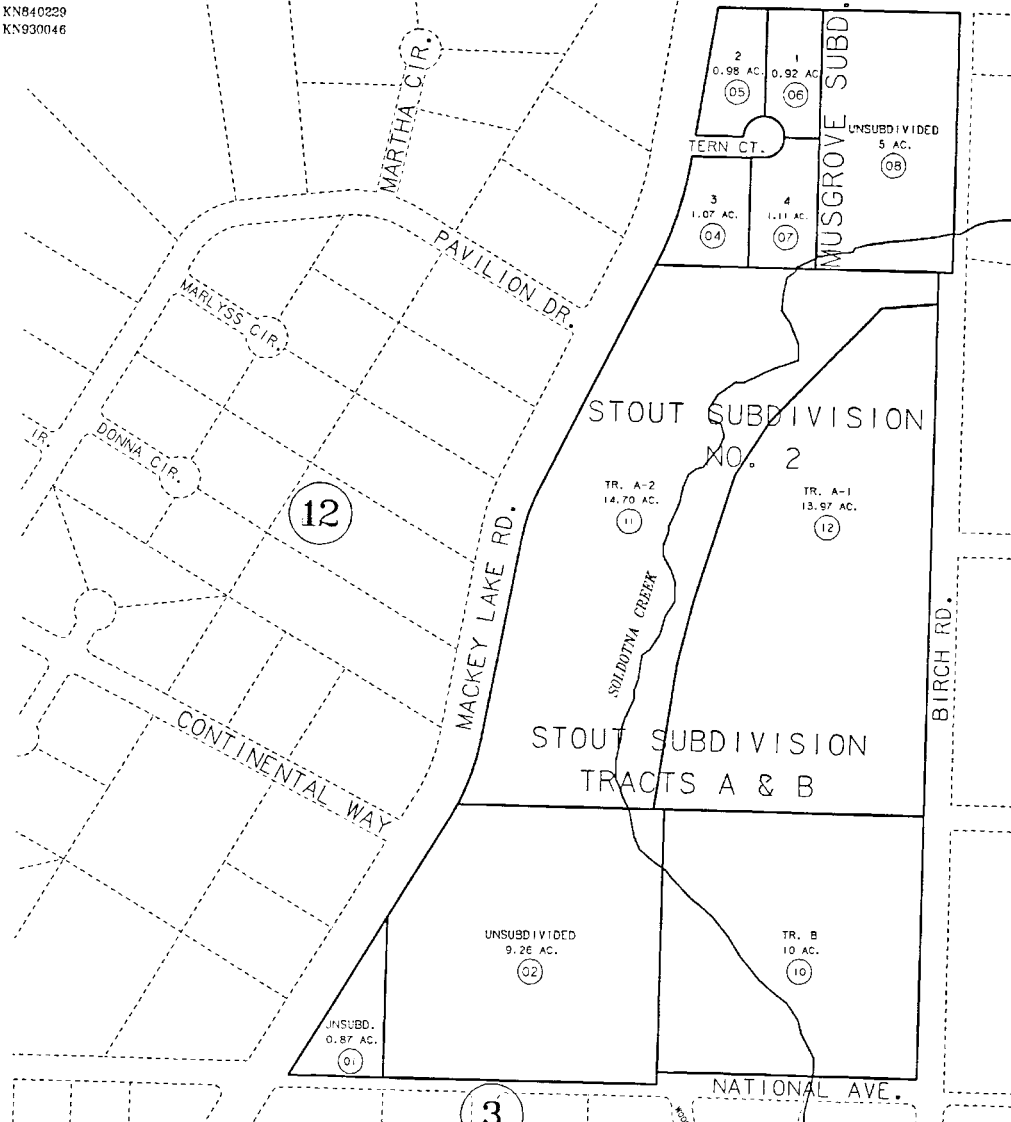


PORTION OF NE1/4, SEC.22, T5N, R10W, SEWARD MERIDIAN

058-310

MUSGROVE
STOUT TRACTS A & B
STOUT SUBDIVISION NO. 2

KN800117
KN840229
KN930046



15

DATE: AUG. 24, 1993

FOR 1994 ASSESSMENT ROLL		
DELETE	ADD	REVISED
	TO	
9		11.12

NOTE - Assessor's Block Numbers Shown In Ellipses
Assessor's Parcel Numbers Shown In Circles

Assessor's Map
Kenai Peninsula Borough

THIS MAP IS PREPARED
FOR KENAI PENINSULA
BOROUGH ASSESSING DEPT.
USE ONLY AND IS NOT
INTENDED FOR ANY
OTHER USE OR REPRESENTATION