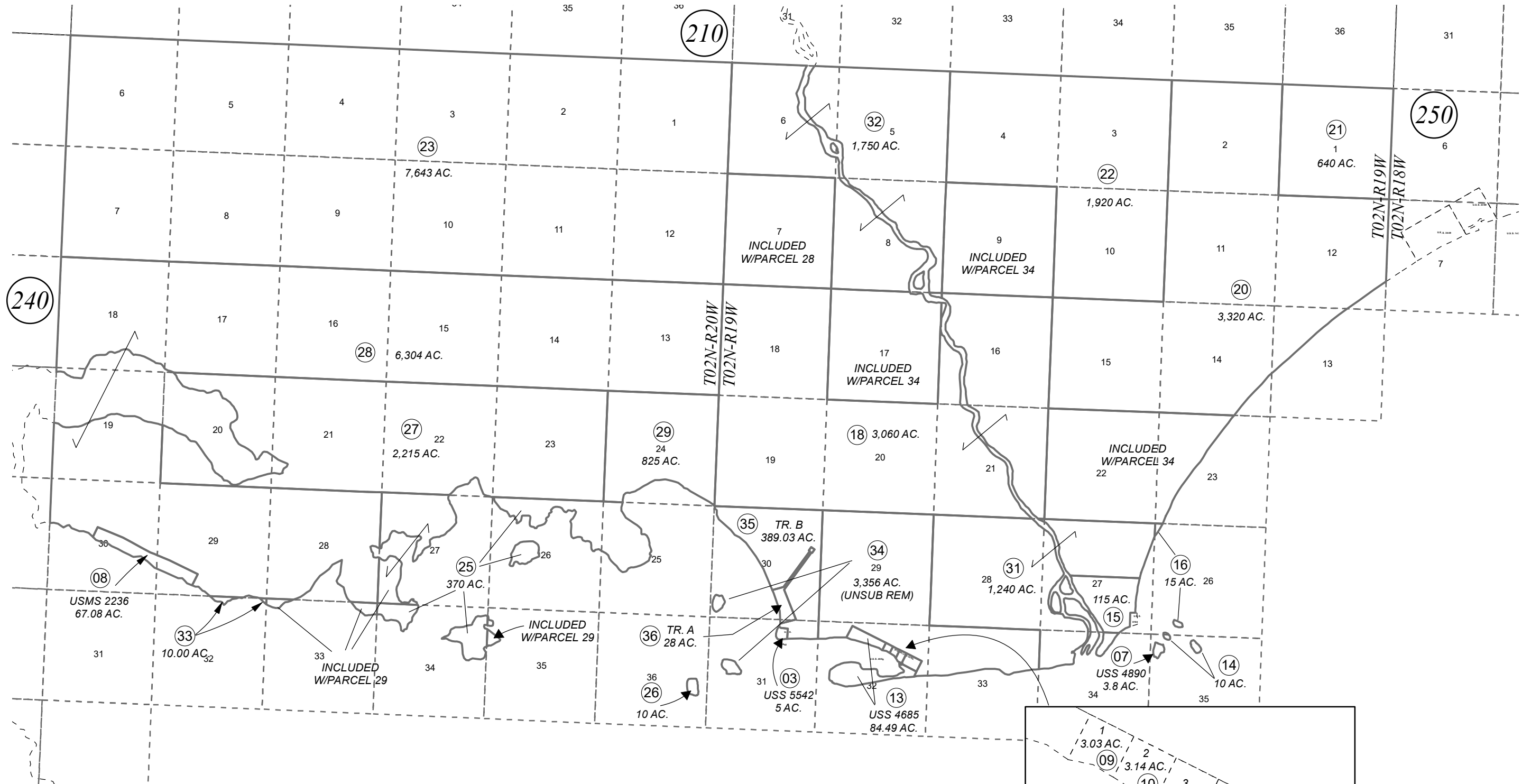


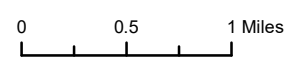
T02N, R19W, R20W, S.M.

221-250



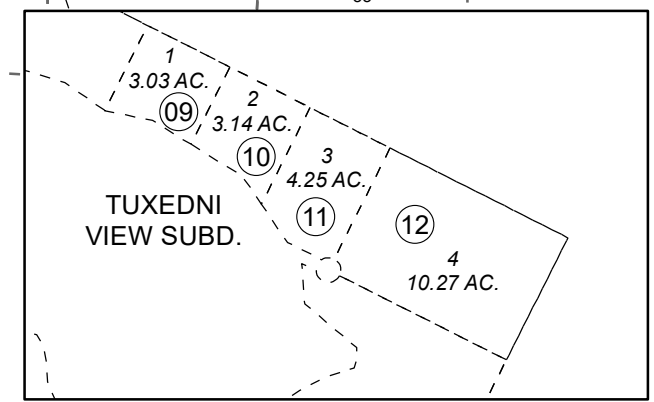
FEBRUARY 22, 2022

For 2022 assessment roll		
Delete	Add	Revise
	To	
30	34-36	



Assessor's Map  
Kenai Peninsula Borough

US MINERAL SURVEY 2236 □ IL0002236  
 US SURVEY 4890 □ IL0004890  
 US SURVEY 5542 □ IL0005542  
 TUXEDNI VIEW SUB □ IL0820014  
 TUXEDNI NORTH IL2021002



This map is prepared for Kenai Peninsula Borough Assessing Dept. use only and is not intended for conveyance nor is it a survey.

Note- Assessor's block Numbers Shown in Ellipses  
 Assessor's Parcel Numbers Shown in Circles