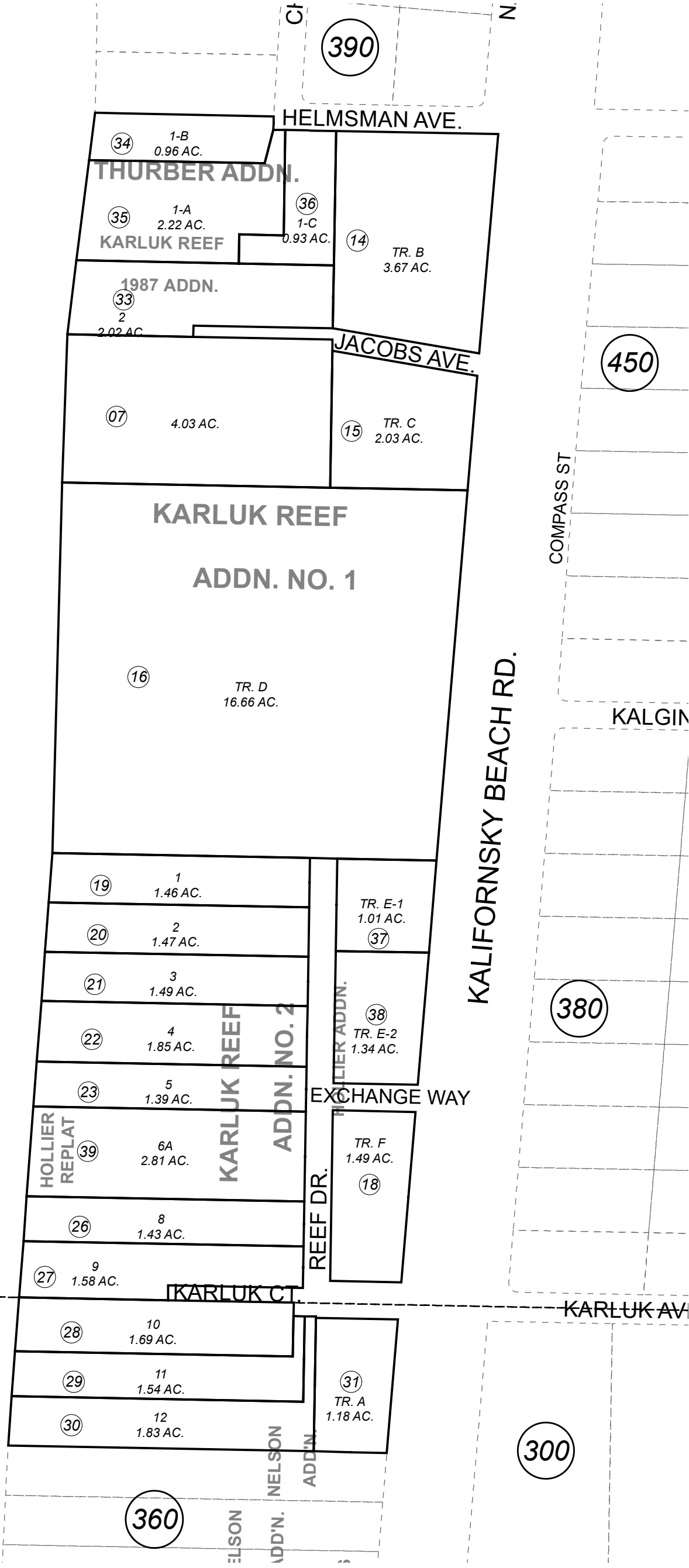


055-540

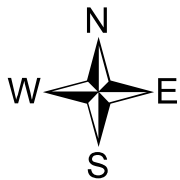
POR. SEC. 19 & 30, T05N, R11W, S.M.

COOK  
INLET



DECEMBER 2, 2019

For 2020 assessment roll			
Delete	Add	Revise	
		To	39
		24, 25	



FISHERMEN ROADS SUB  KN0840073  
 KARLUK REEF SUB ADDN NO 1  KN0850067  
 KARLUK REEF SUB 1987 SUB OF TRACT A ADDN  KN0880011  
 KARLUK REEF SUB ADDN NO 2  KN0880016  
 KARLUK REEF SUB THURBER ADDN  KN2002016  
 KARLUK REEF SUB HOLLIER ADDN  KN2004052  
 KARLUK REEF SUB HOLLIER REPLAT  KN2019049

Assessor's Map  
Kenai Peninsula Borough

This map is prepared for Kenai Peninsula Borough Assessing Dept. use only and is not intended for conveyance nor is it a survey.

Note- Assessor's block Numbers Shown in Ellipses  
Assessor's Parcel Numbers Shown in Circles