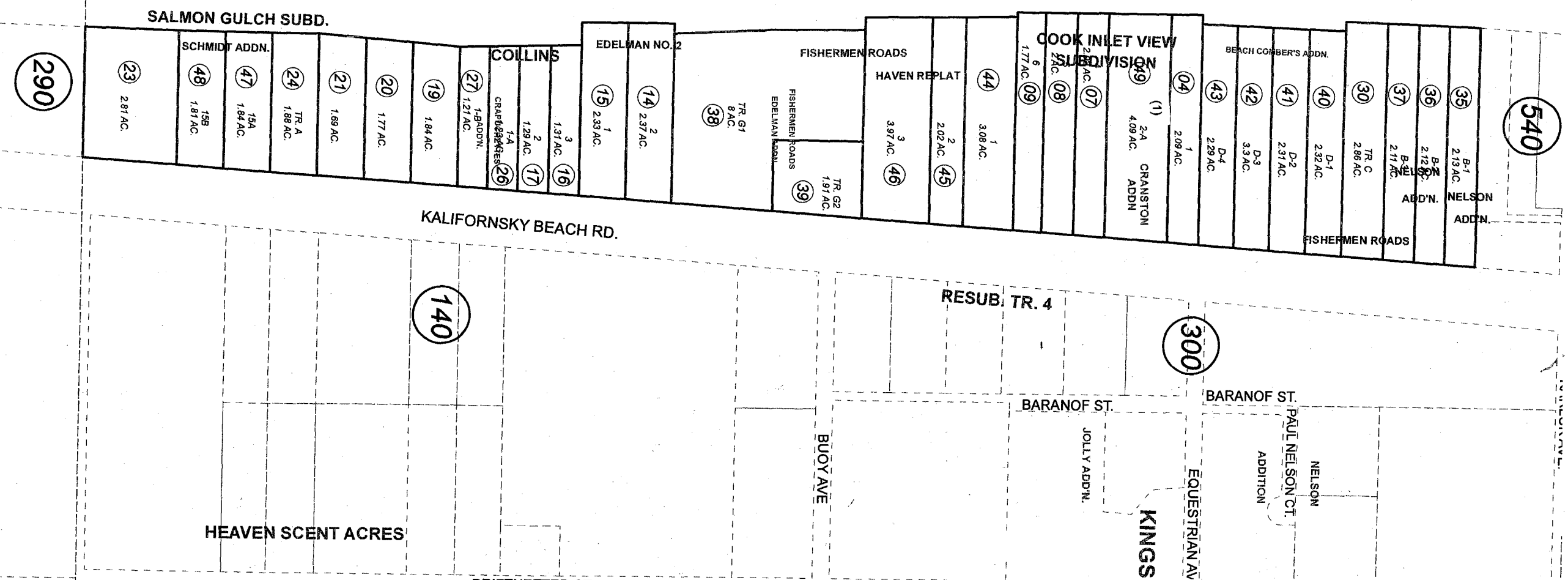


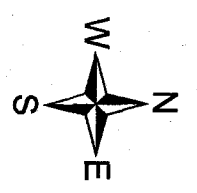
SEC. 30
SEC. 31

COOK
INLET



NOVEMBER 25, 2008

For 2009 assessment roll		
Delete	Add	Revise
	To	
5,6	49	



Assessor's Map
Kenai Peninsula Borough

- COLLINS SUB □ KN0720060
- EDELMAN SUB NO 2 □ KN0740023
- COOK INLET VIEW SUB □ KN0740057
- COOK INLET VIEW SUB □ KN0770057
- SALMON GULCH SUB □ KN0830052
- COLLINS SUB CRAPUCHETTES ADDN □ KN0840049
- FISHERMEN ROADS SUB □ KN0840073
- FISHERMEN ROADS SUB NELSON ADDN □ KN0860164
- FISHERMEN ROADS SUB EDELMAN ADDN □ KN0960059
- FISHERMEN ROADS BEACH COMBERS ADDN □ KN0970067
- FISHERMEN ROADS HAVEN REPLAT □ KN0990050
- SALMON GULCH SUB SCHMIDT ADDN □ KN2005076
- COOK INLET VIEW SUB CRANSTON ADDN □ KN2008-118

Note- Assessor's block Numbers Shown in Elipses
Assessor's Parcel Numbers Shown in Circles

This map is prepared for Kenai Peninsula Borough Assessing Dept. use only and is not intended for conveyance nor is it a survey.