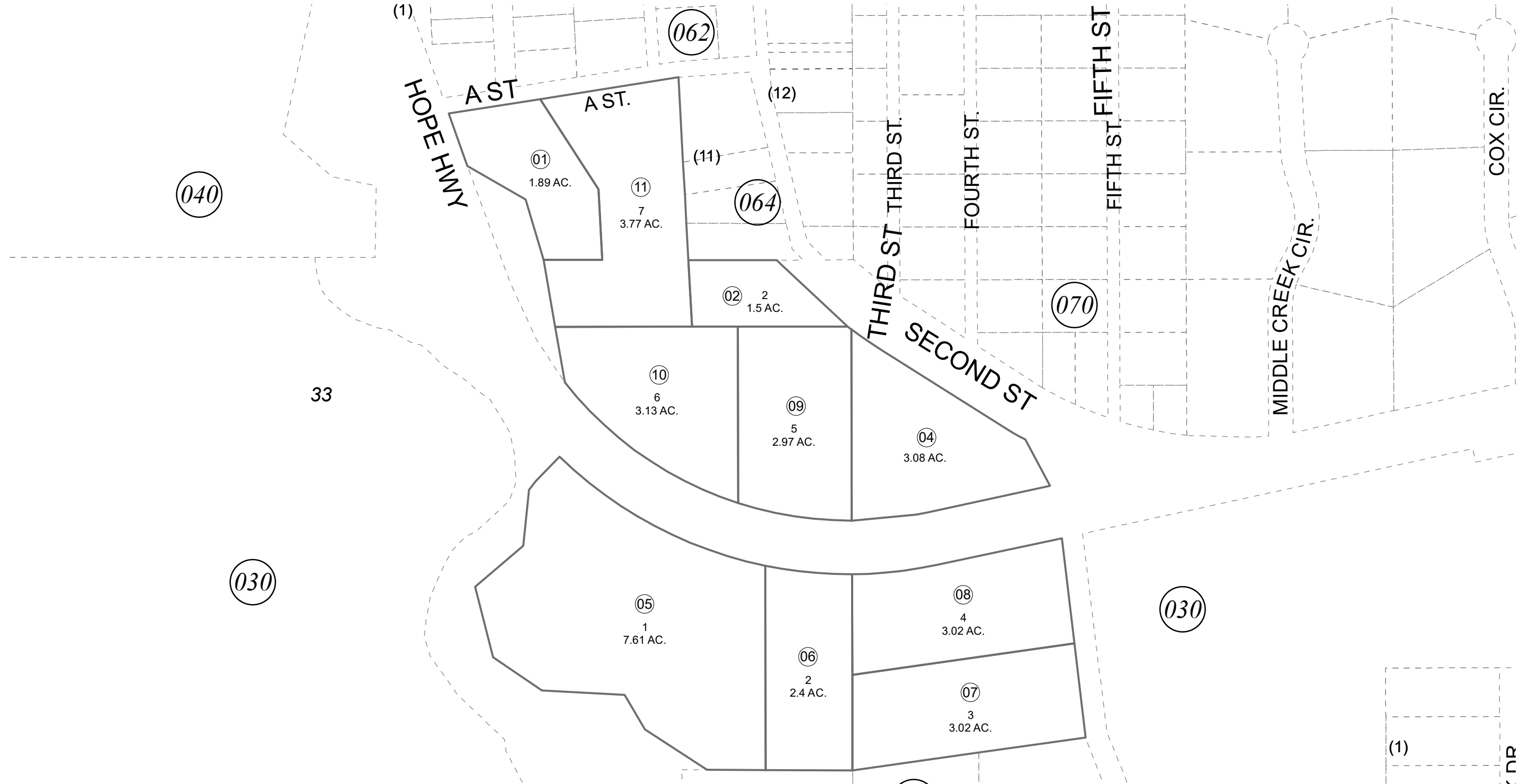


POR. SEC. 33, T10N, R02W, S.M.

035-031



0 50 100 200 Feet

MAY 7, 2021

For 2022 assessment roll		
Delete	Add	Revise
	To	
03	05-11	

Assessor's Map
Kenai Peninsula Borough

US SURVEY 3189 SW0003189
 RECORD OF SURVEY SW2020011
 TUTL'UH SUB SW2021002

Note- Assessor's block Numbers Shown in Ellipses
 Assessor's Parcel Numbers Shown in Circles

(1)