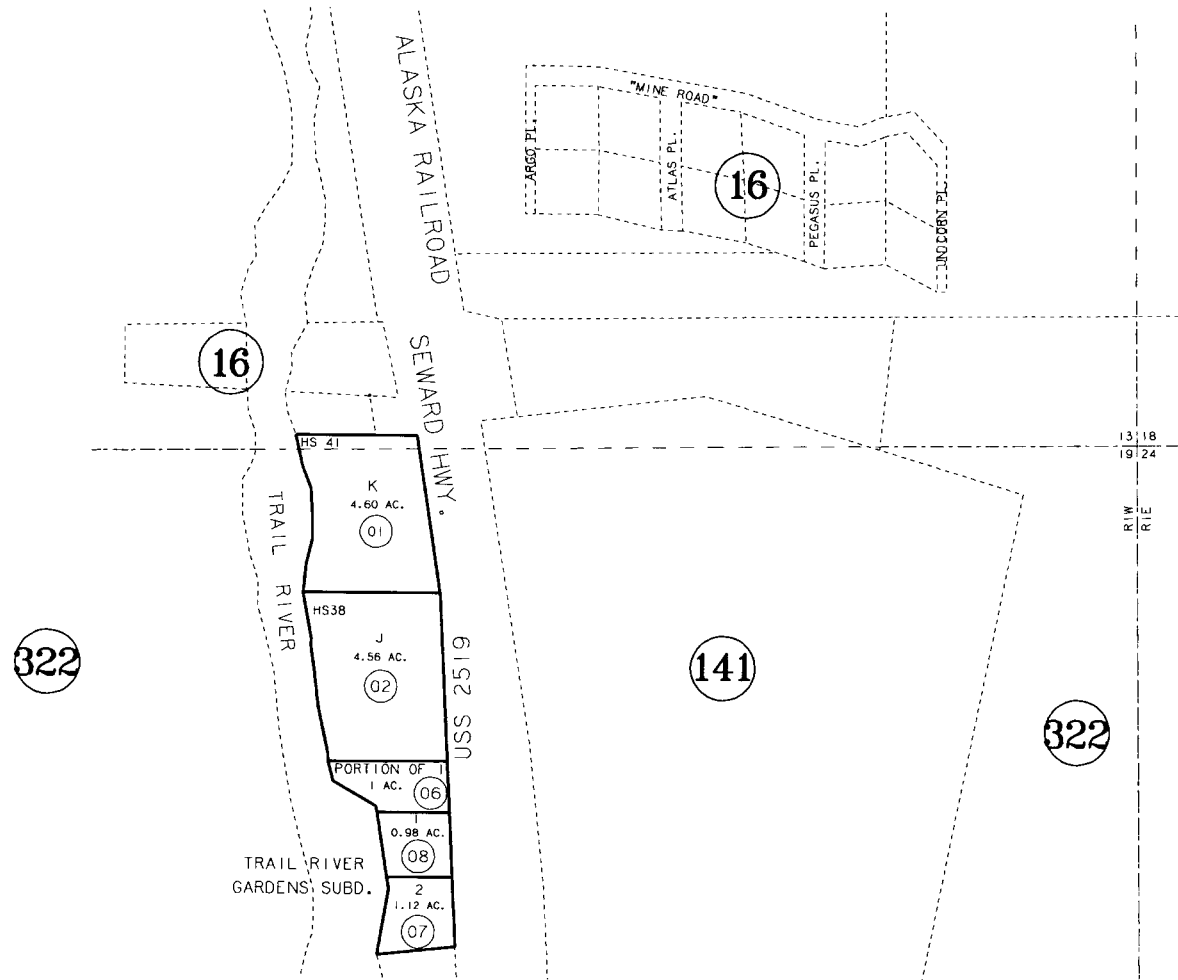


PORTION SECTIONS 13 AND 24, T4N, R1W, SEWARD MERIDIAN

125-150

TRAIL RIVER GARDENS

SW780001



DATE: FEB. 23, 1994

FOR 1995 ASSESSMENT ROLL		
DELETE	ADD	REVISED
TO		
REV. PG. REF.		

NOTE - Assessor's Block Numbers Shown In Ellipses
Assessor's Parcel Numbers Shown In Circles

Assessor's Map
Kenai Peninsula Borough

THIS MAP IS PREPARED
FOR KENAI PENINSULA
BOROUGH ASSESSING DEPT.
USE ONLY AND IS NOT
INTENDED FOR ANY
OTHER USE OR REPRESENTATION