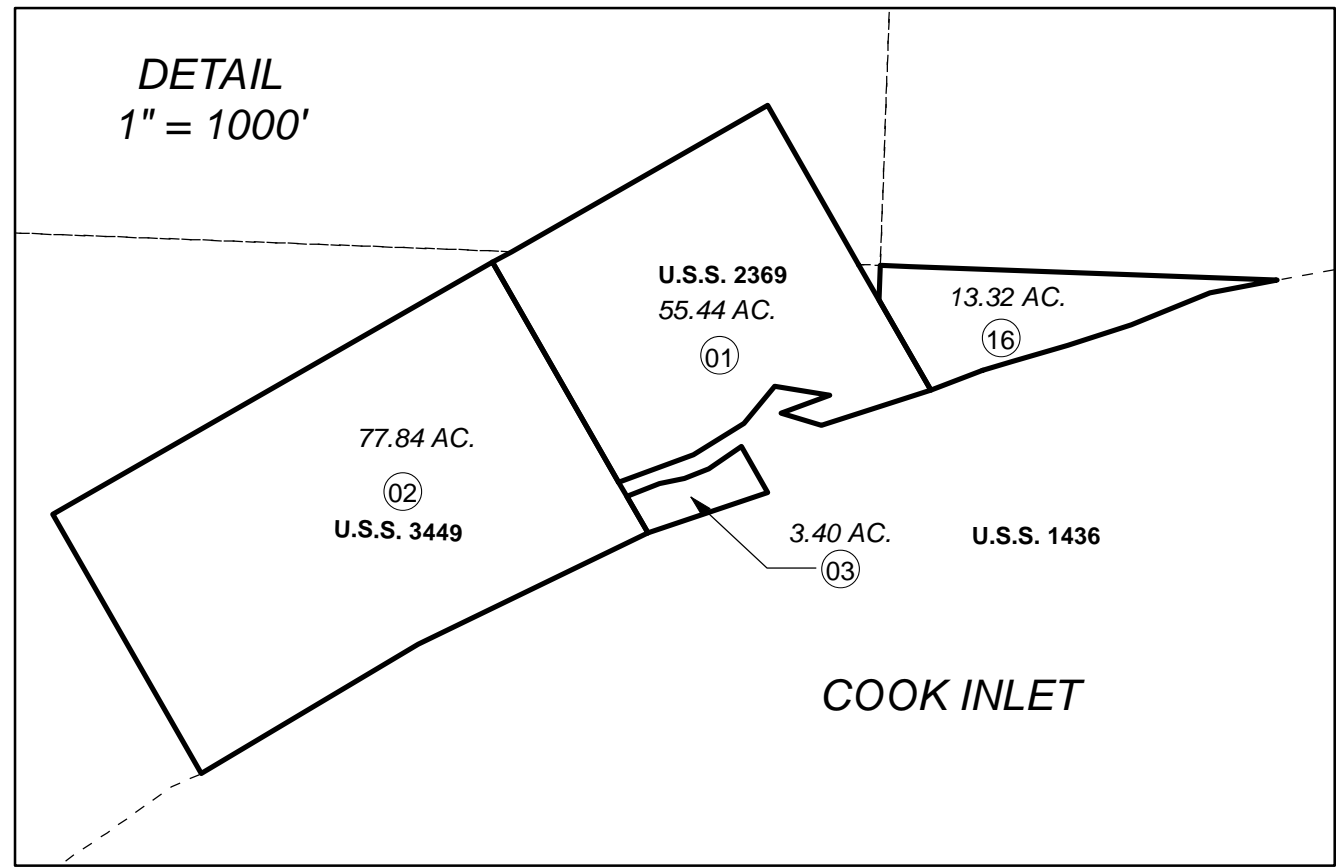
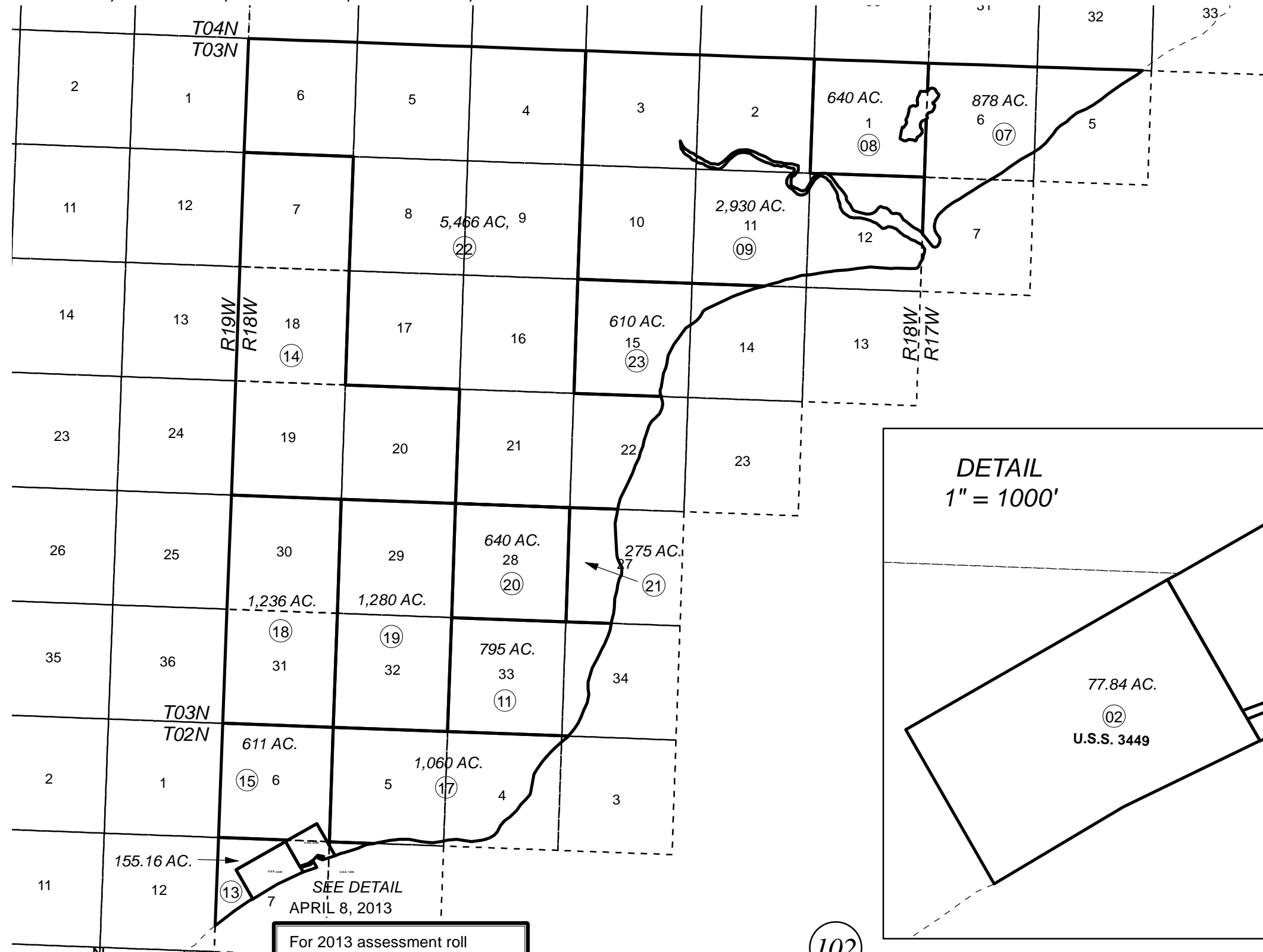
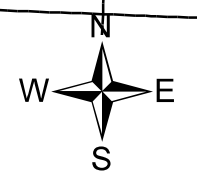


T02N, T03N, R17W, R18W, S.M.

221-220



102



0 1,250,500 5,000 Feet

For 2013 assessment roll		
Delete	Add	Revise
	To	
10,12	15-23	

Assessor's Map
Kenai Peninsula Borough

US SURVEY 1436 IL0001436
US SURVEY 2369 IL0002369
US SURVEY 3449 IL0003449

This map is prepared for Kenai Peninsula Borough Assessing Dept. use only and is not intended for conveyance nor is it a survey.
Note- Assessor's block Numbers Shown in Elipses
Assessor's Parcel Numbers Shown in Circles