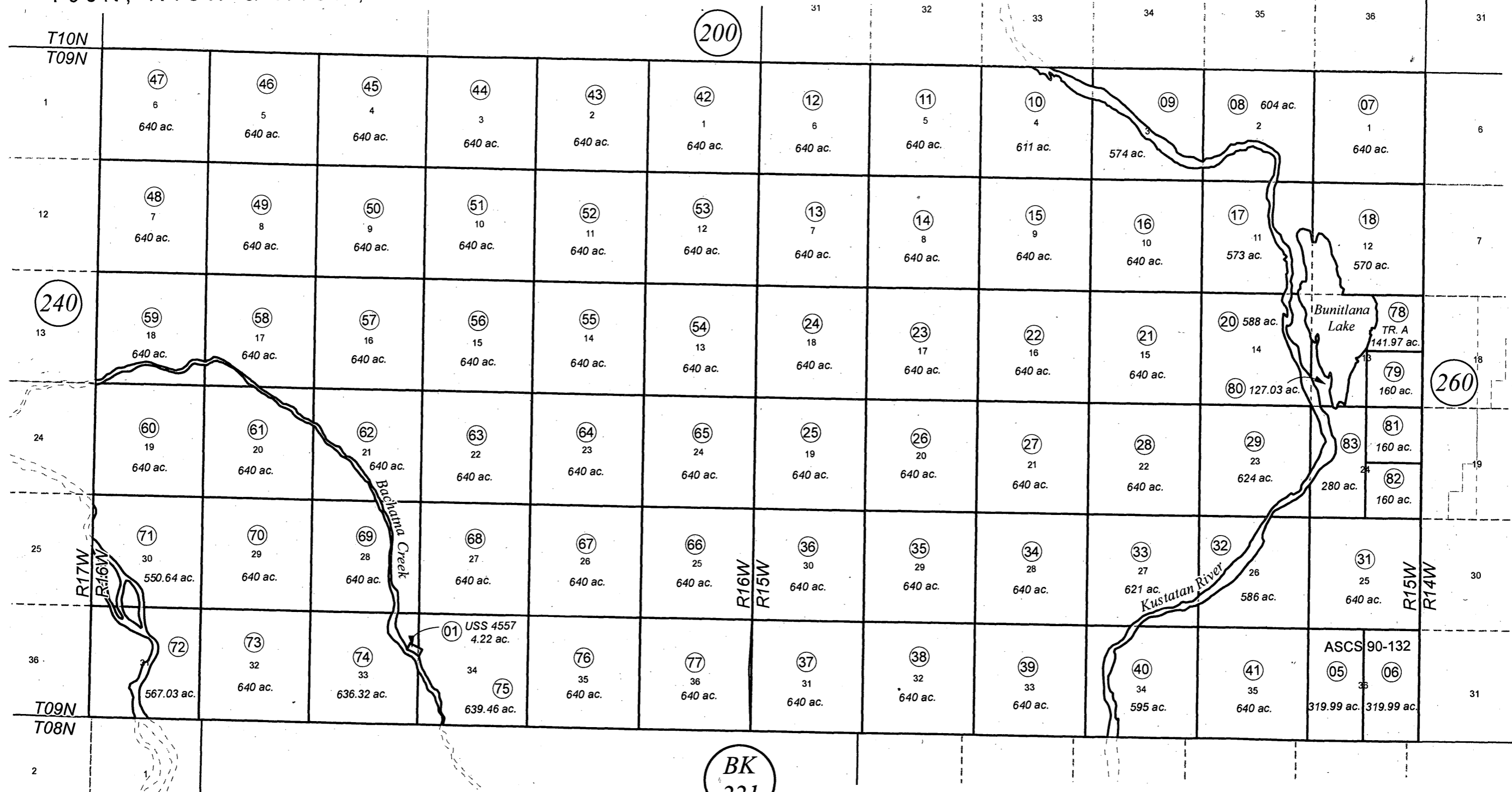


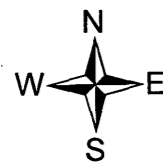
T09N, R15W & R16W, S.M.

211-250



AUGUST 2, 2012

| For 2012 assessment roll | | |
|--------------------------|-------|--------|
| Delete | Add | Revise |
| To | | |
| 19,30 | 78-83 | |



Assessor's Map
Kenai Peninsula Borough

KUSTATAN RIDGE MUNICIPAL ENTITLEMENT SURVEY AN2011063

This map is prepared for Kenai Peninsula Borough Assessing Dept. use only and is not intended for conveyance nor is it a survey.
Note- Assessor's block Numbers Shown in Ellipses
Assessor's Parcel Numbers Shown in Circles