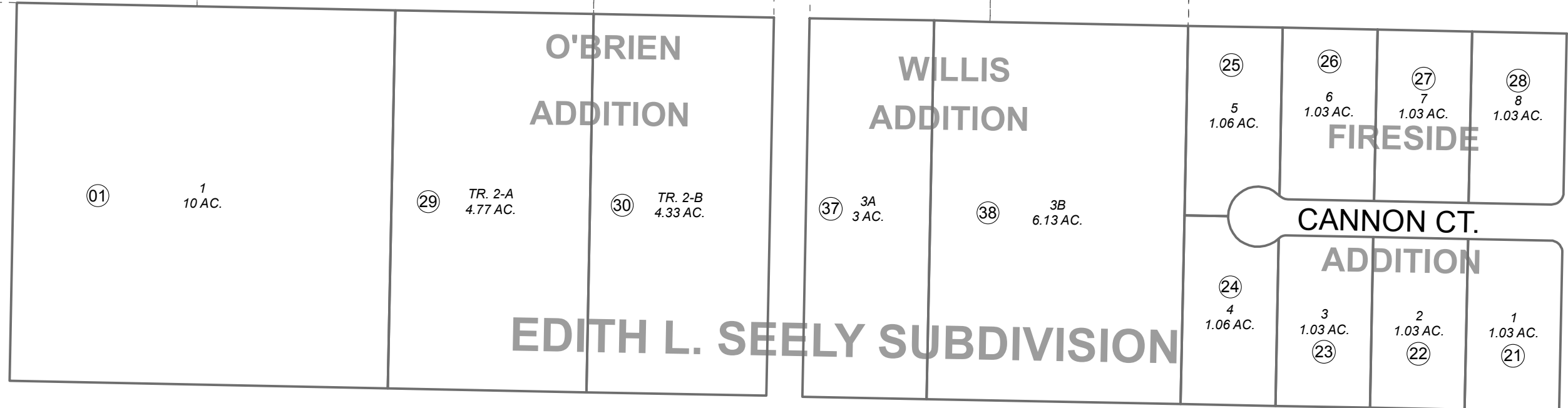


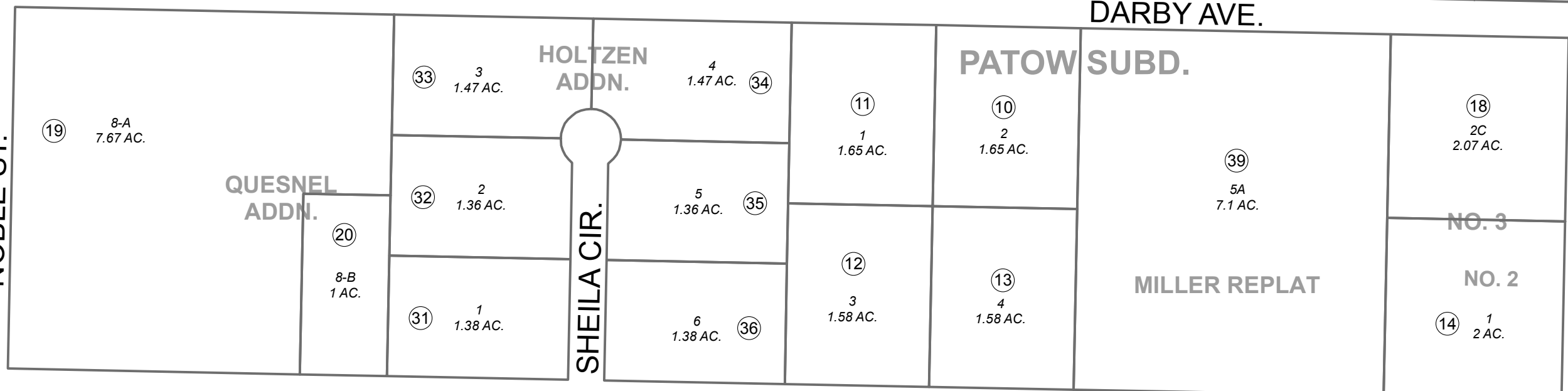
131



131



NOBLE ST.



133

JEAN ST.

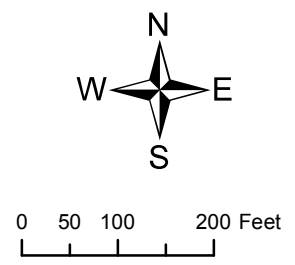
DARBY AVE.

LISBURNE AVE.

200

OCTOBER 28, 2015

For 2016 assessment roll		
Delete	Add	Revise
		To
09, 16,		
17	39	



Assessor's Map  
Kenai Peninsula Borough

- EDITH L SEELY SUB KN0001657
- PATOW SUB KN0780130
- EDITH L SEELY SUB NO 3 KN0830220
- EDITH L SEELY SUB NO 2 AMENDED KN0830271
- EDITH L SEELY SUB QUESNEL ADDN KN0840080
- EDITH L SEELY SUB FIRESIDE ADDN KN0850107
- EDITH L SEELY SUB O'BRIEN ADDN KN0850110
- EDITH L SEELY SUB HOLTZEN ADDN KN0850119
- EDITH L SEELY SUB WILLIS ADDN KN2008125
- PATOW SUB MILLER REPLAT KN2015059

This map is prepared for Kenai Peninsula Borough Assessing Dept. use only and is not intended for conveyance nor is it a survey.  
 Note- Assessor's block Numbers Shown in Ellipses  
 Assessor's Parcel Numbers Shown in Circles