

SW1/4 SW1/4 SC. 12, T3N, R12W, S.M.

133-541

020

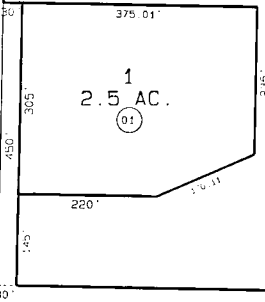
TR. A1  
37.23 AC.  
02

020

020

ALFRED HERMANSEN SUBD.  
#2

JULIANA ST.



54



DATE: OCT. 14, 1999

FOR 2000 ASSESSMENT ROLL		
DELETE	ADD	REVISED
TO		
NEW PAGE		

Assessor's Map  
Kenai Peninsula Borough

ALFRED HERMANSEN SUB #2

THIS MAP IS PREPARED  
FOR KENAI PENINSULA  
BOROUGH ASSESSING DEPT  
USE ONLY AND IS NOT  
INTENDED FOR CONVEYANCE.  
NOR IS IT A SURVEY.

NOTE - Assessor's Block Numbers Shown in Ellipses  
Assessor's Parcel Numbers Shown in Circles