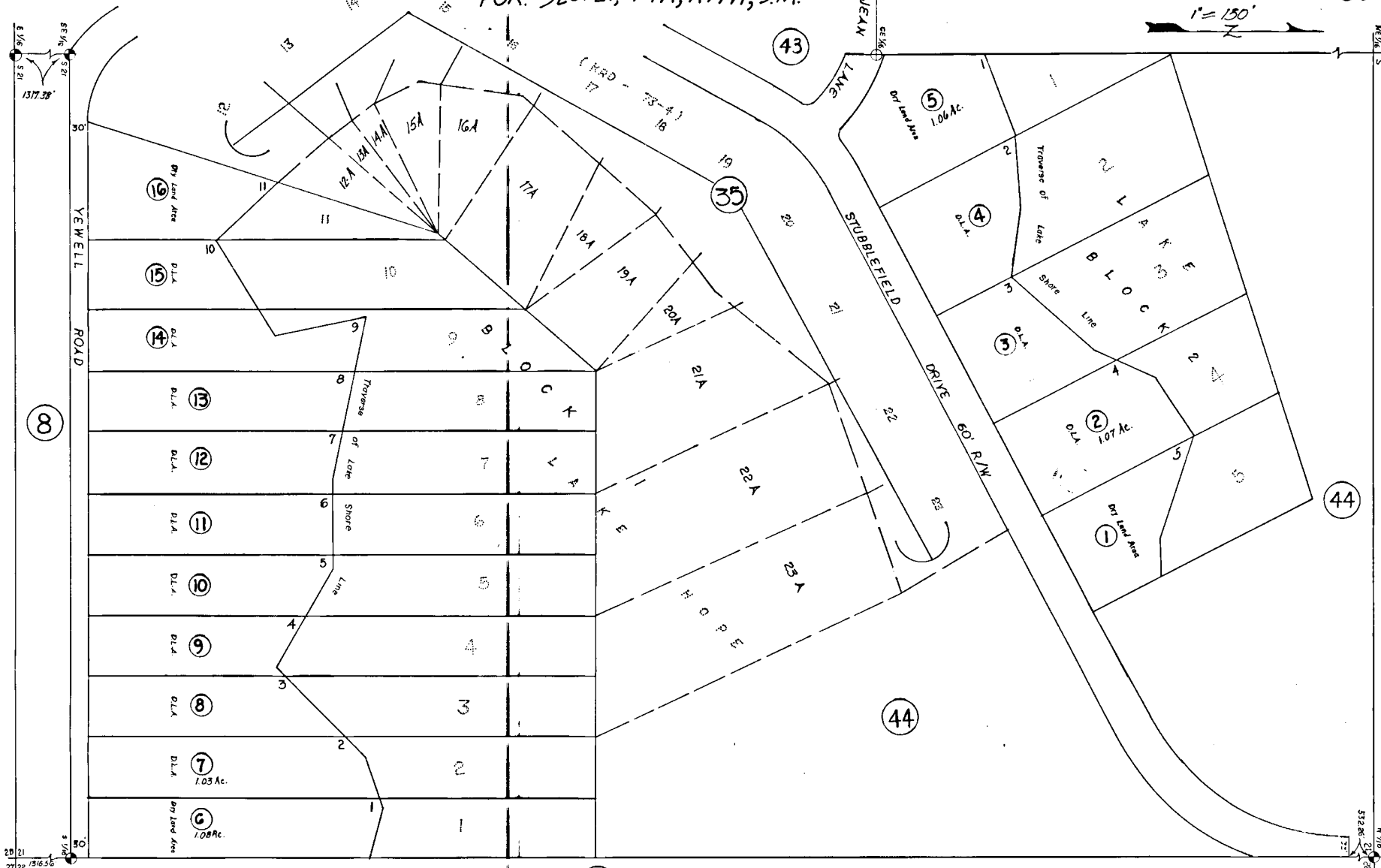


POR. SEC. 21, T4N, R11W, S.M.

131-39

1" = 150'



16115  
21122  
**STUBBLEFIELD SUB. ADD. #1**  
 Kenai Peninsula Borough, Alaska  
 K-75-49

NOTE - Assessor's Block Numbers Shown in Ellipses  
 Assessor's Parcel Numbers Shown in Circles