



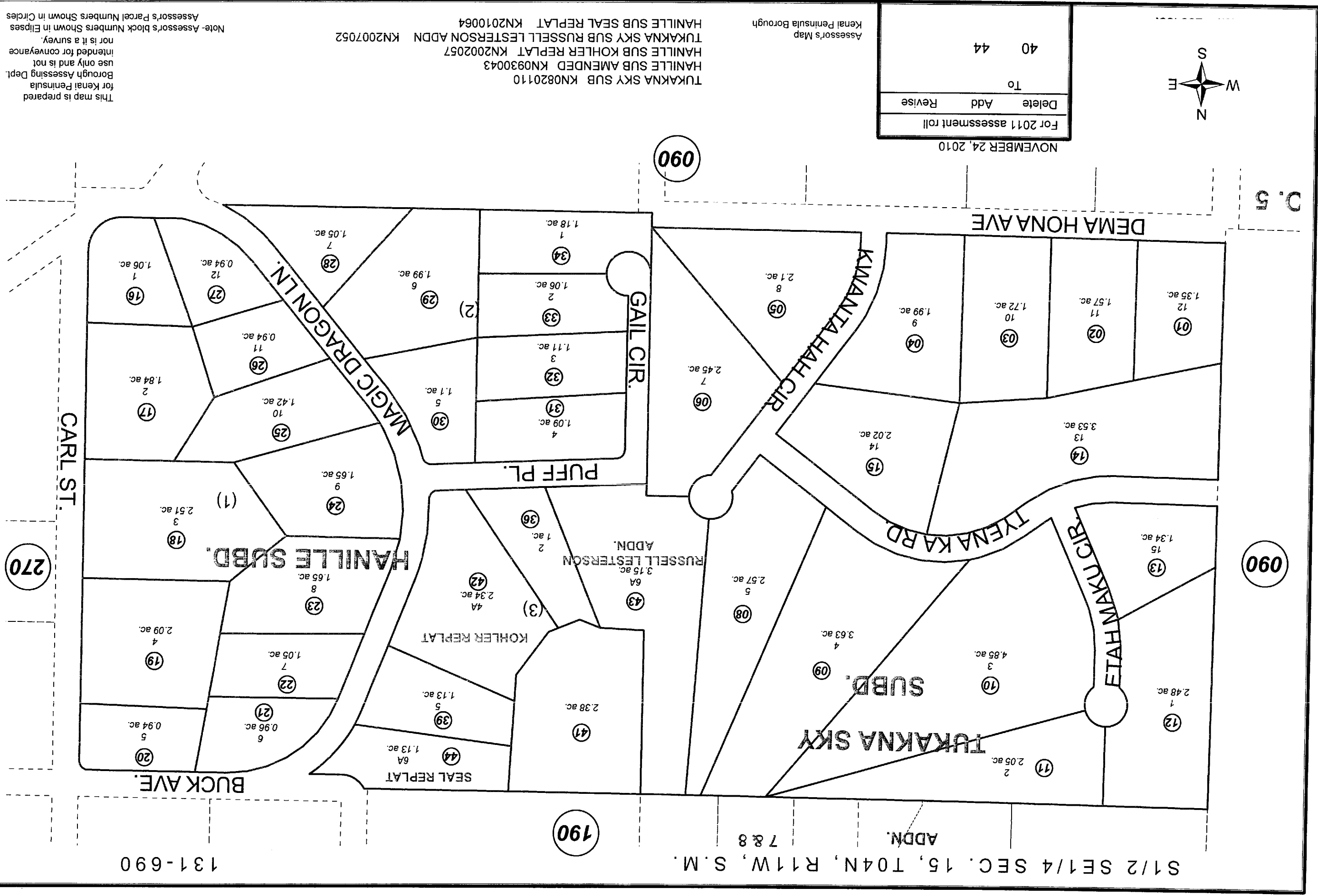
For 2011 assessment roll		
Delete	Add	Revise
To	40 44	

NOVEMBER 24, 2010

Assessor's Map
Kenal Peninsula Borough

TUKAKNA SKY SUB KN0820110
HANILLE SUB AMENDED KN0930043
HANILLE SUB KOHLER REPLAT KN2002057
TUKAKNA SKY SUB RUSSELL LESTERSON ADDN KN2007052
HANILLE SUB SEAL REPLAT KN2010064

This map is prepared for Kenal Peninsula Borough Assessing Dept. use only and is not intended for conveyance nor is it a survey. Note- Assessor's block Numbers Shown in Ellipses Assessor's Parcel Numbers Shown in Circles



C. 5

090

090

270

190

S1/2 SE1/4 SEC. 15, T04N, R11W, S.M. 7 & 8

131-690